

Datasheet for ABIN7166183
anti-C1orf38 antibody (AA 62-177)

3 Images

[Go to Product page](#)

Overview

| | |
|----------------------|---|
| Quantity: | 100 µg |
| Target: | C1orf38 |
| Binding Specificity: | AA 62-177 |
| Reactivity: | Human |
| Host: | Rabbit |
| Clonality: | Polyclonal |
| Conjugate: | This C1orf38 antibody is un-conjugated |
| Application: | Western Blotting (WB), ELISA, Immunofluorescence (IF), Immunohistochemistry (IHC) |

Product Details

| | |
|-------------------|--|
| Immunogen: | Recombinant Human Protein THEMIS2 protein (62-177AA) |
| Isotype: | IgG |
| Cross-Reactivity: | Human |
| Purification: | >95%, Protein G purified |

Target Details

| | |
|-------------------|---|
| Target: | C1orf38 |
| Alternative Name: | THEMIS2 (C1orf38 Products) |
| Background: | Background: May constitute a control point in macrophage inflammatory response, promoting LPS-induced TNF production. |

Target Details

Aliases: Basement membrane induced antibody, Chromosome 1 open reading frame 38 antibody, ICB 1 antibody, ICB1 antibody, Induced by contact to basement membrane 1 protein antibody, Protein ICB 1 antibody, Protein ICB-1 antibody, Protein THEMIS2 antibody, THEMIS2 antibody, THMS2_HUMAN antibody, Thymocyte expressed molecule involved in selection protein 2 antibody, Thymocyte-expressed molecule involved in selection protein 2 antibody

UniProt: [Q5TEJ8](#)

Application Details

Application Notes: Recommended dilution: WB:1:500-1:5000, IHC:1:200-1:500, IF:1:50-1:200,

Restrictions: For Research Use only

Handling

Format: Liquid

Buffer: Preservative: 0.03 % Proclin 300
Constituents: 50 % Glycerol, 0.01M PBS, pH 7.4

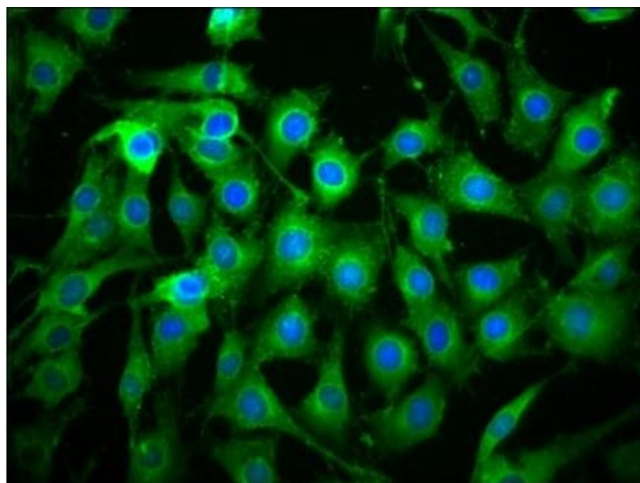
Preservative: ProClin

Precaution of Use: This product contains ProClin: a POISONOUS AND HAZARDOUS SUBSTANCE which should be handled by trained staff only.

Storage: -20 °C,-80 °C

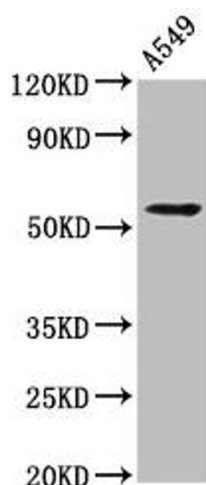
Storage Comment: Upon receipt, store at -20°C or -80°C. Avoid repeated freeze.

Images



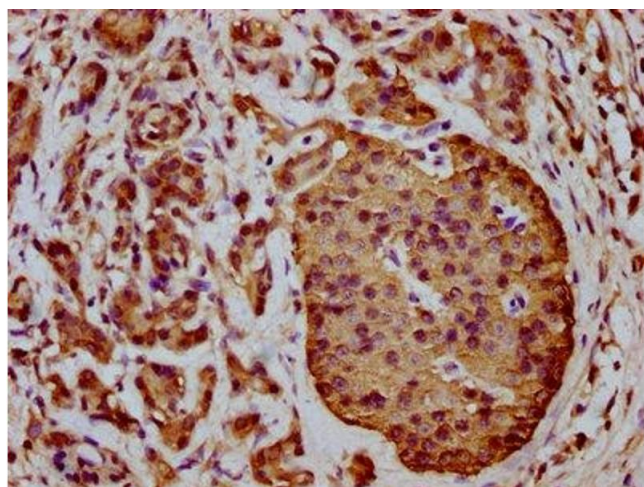
Immunofluorescence

Image 1. Immunofluorescence staining of NIH/3T3 cells with ABIN7166183 at 1:133, counter-stained with DAPI. The cells were fixed in 4% formaldehyde, permeabilized using 0.2% Triton X-100 and blocked in 10% normal Goat Serum. The cells were then incubated with the antibody overnight at 4°C. The secondary antibody was Alexa Fluor 488-conjugated AffiniPure Goat Anti-Rabbit IgG(H+L).



Western Blotting

Image 2. Western Blot Positive WB detected in: A549 whole cell lysate All lanes: THEMIS2 antibody at 4.2 µg/mL Secondary Goat polyclonal to rabbit IgG at 1/50000 dilution Predicted band size: 73, 30, 57, 14, 58, 51 kDa Observed band size: 57 kDa



Immunohistochemistry

Image 3. IHC image of ABIN7166183 diluted at 1:400 and staining in paraffin-embedded human pancreatic cancer performed on a Leica Bond™ system. After dewaxing and hydration, antigen retrieval was mediated by high pressure in a citrate buffer (pH 6.0). Section was blocked with 10% normal goat serum 30min at RT. Then primary antibody (1% BSA) was incubated at 4°C overnight. The primary is detected by a biotinylated secondary antibody and visualized using an HRP conjugated SP system.