

Datasheet for ABIN7166205

**anti-Sec23 Homolog B antibody (AA 208-325)**[Go to Product page](#)**2** Images

## Overview

Quantity:	100 µg
Target:	Sec23 Homolog B (SEC23B)
Binding Specificity:	AA 208-325
Reactivity:	Human
Host:	Rabbit
Clonality:	Polyclonal
Conjugate:	This Sec23 Homolog B antibody is un-conjugated
Application:	ELISA, Immunohistochemistry (IHC)

## Product Details

Immunogen:	Recombinant Human Protein transport protein Sec23B protein (208-325AA)
Isotype:	IgG
Cross-Reactivity:	Human
Purification:	>95%, Protein G purified

## Target Details

Target:	Sec23 Homolog B (SEC23B)
Alternative Name:	SEC23B ( <a href="#">SEC23B Products</a> )
Background:	Background: Component of the COPII coat, that covers ER-derived vesicles involved in transport from the endoplasmic reticulum to the Golgi apparatus. COPII acts in the cytoplasm to promote

## Target Details

the transport of secretory, plasma membrane, and vacuolar proteins from the endoplasmic reticulum to the Golgi complex (By similarity).

Aliases: CDA II antibody, CDAll antibody, CDAN2 antibody, HEMPAS antibody, Protein transport protein Sec23B antibody, RP11-379J5.1 antibody, SC23B\_HUMAN antibody, Sec23 homolog B (S. cerevisiae) antibody, SEC23 related protein B antibody, SEC23-like protein B antibody, SEC23-related protein B antibody, Sec23b antibody, Transport protein SEC23B antibody

UniProt: [Q15437](#)

## Application Details

Application Notes: Recommended dilution: IHC:1:200-1:500,

Restrictions: For Research Use only

## Handling

Format: Liquid

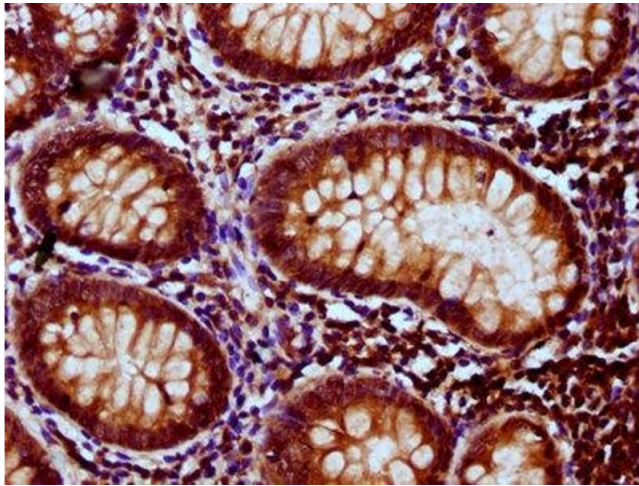
Buffer: Preservative: 0.03 % Proclin 300  
Constituents: 50 % Glycerol, 0.01M PBS, pH 7.4

Preservative: ProClin

Precaution of Use: This product contains ProClin: a POISONOUS AND HAZARDOUS SUBSTANCE which should be handled by trained staff only.

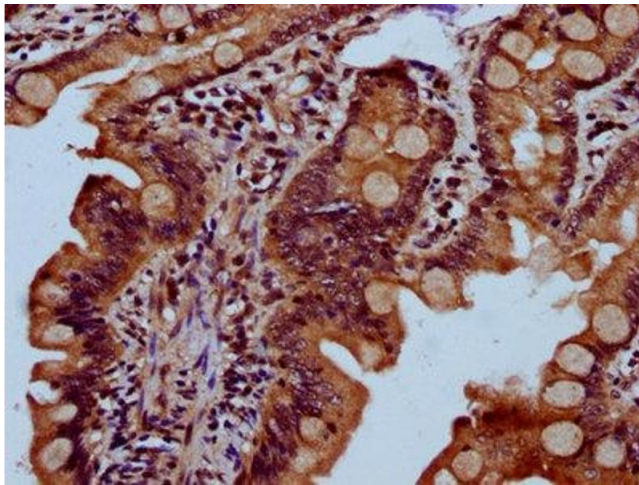
Storage: -20 °C,-80 °C

Storage Comment: Upon receipt, store at -20°C or -80°C. Avoid repeated freeze.



#### Immunohistochemistry

**Image 1.** IHC image of ABIN7166205 diluted at 1:300 and staining in paraffin-embedded human appendix tissue performed on a Leica Bond™ system. After dewaxing and hydration, antigen retrieval was mediated by high pressure in a citrate buffer (pH 6.0). Section was blocked with 10% normal goat serum 30min at RT. Then primary antibody (1% BSA) was incubated at 4°C overnight. The primary is detected by a biotinylated secondary antibody and visualized using an HRP conjugated SP system.



#### Immunohistochemistry

**Image 2.** IHC image of ABIN7166205 diluted at 1:300 and staining in paraffin-embedded human small intestine tissue performed on a Leica Bond™ system. After dewaxing and hydration, antigen retrieval was mediated by high pressure in a citrate buffer (pH 6.0). Section was blocked with 10% normal goat serum 30min at RT. Then primary antibody (1% BSA) was incubated at 4°C overnight. The primary is detected by a biotinylated secondary antibody and visualized using an HRP conjugated SP system.