



[Go to Product page](#)

Datasheet for ABIN7166221
anti-IGSF9 antibody (AA 132-298)

2 Images

Overview

Quantity:	100 µg
Target:	IGSF9
Binding Specificity:	AA 132-298
Reactivity:	Human
Host:	Rabbit
Clonality:	Polyclonal
Conjugate:	This IGSF9 antibody is un-conjugated
Application:	ELISA, Immunohistochemistry (IHC)

Product Details

Immunogen:	Recombinant Human Protein turtle homolog A protein (132-298AA)
Isotype:	IgG
Cross-Reactivity:	Human
Purification:	>95%, Protein G purified

Target Details

Target:	IGSF9
Alternative Name:	IGSF9 (IGSF9 Products)
Background:	Background: Functions in dendrite outgrowth and synapse maturation. Aliases: IGSF9 antibody, IGSF9A antibody, KIAA1355 antibody, NRT1 antibody, Protein turtle

Target Details

homolog A antibody, Immunoglobulin superfamily member 9A antibody, IgSF9A antibody

UniProt: [Q9P2J2](#)

Application Details

Application Notes: Recommended dilution: IHC:1:200-1:500,

Restrictions: For Research Use only

Handling

Format: Liquid

Buffer: Preservative: 0.03 % Proclin 300
Constituents: 50 % Glycerol, 0.01M PBS, pH 7.4

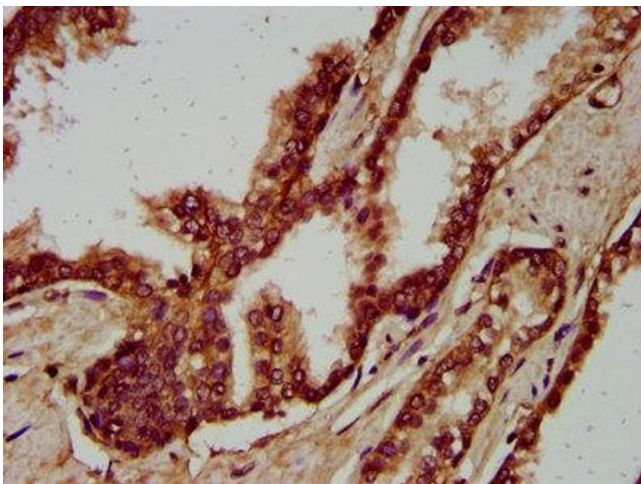
Preservative: ProClin

Precaution of Use: This product contains ProClin: a POISONOUS AND HAZARDOUS SUBSTANCE which should be handled by trained staff only.

Storage: -20 °C,-80 °C

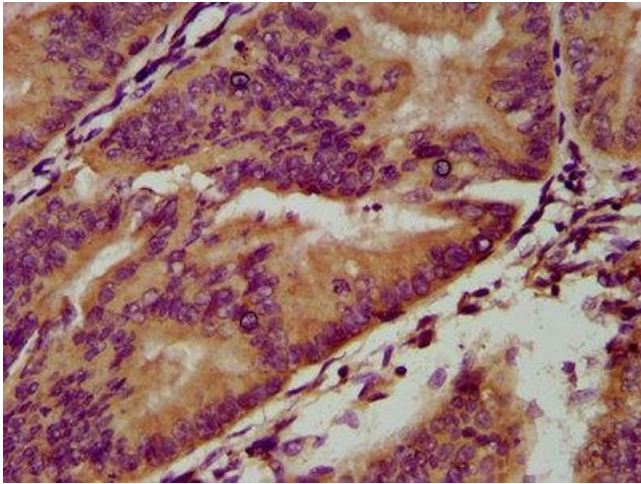
Storage Comment: Upon receipt, store at -20°C or -80°C. Avoid repeated freeze.

Images



Immunohistochemistry

Image 1. IHC image of ABIN7166221 diluted at 1:200 and staining in paraffin-embedded human prostate cancer performed on a Leica Bond™ system. After dewaxing and hydration, antigen retrieval was mediated by high pressure in a citrate buffer (pH 6.0). Section was blocked with 10% normal goat serum 30min at RT. Then primary antibody (1% BSA) was incubated at 4°C overnight. The primary is detected by a biotinylated secondary antibody and visualized using an HRP conjugated SP system.



Immunohistochemistry

Image 2. IHC image of ABIN7166221 diluted at 1:200 and staining in paraffin-embedded human endometrial cancer performed on a Leica Bond™ system. After dewaxing and hydration, antigen retrieval was mediated by high pressure in a citrate buffer (pH 6.0). Section was blocked with 10% normal goat serum 30min at RT. Then primary antibody (1% BSA) was incubated at 4°C overnight. The primary is detected by a biotinylated secondary antibody and visualized using an HRP conjugated SP system.