

Datasheet for ABIN7166237
anti-PTP4A2 antibody (AA 1-164)



[Go to Product page](#)

3 Images

Overview

Quantity:	100 µg
Target:	PTP4A2
Binding Specificity:	AA 1-164
Reactivity:	Human
Host:	Rabbit
Clonality:	Polyclonal
Conjugate:	This PTP4A2 antibody is un-conjugated
Application:	ELISA, Immunohistochemistry (IHC), Immunofluorescence (IF)

Product Details

Immunogen:	Recombinant Human Protein tyrosine phosphatase type IVA 2 protein (1-164AA)
Isotype:	IgG
Cross-Reactivity:	Human
Purification:	>95%, Protein G purified

Target Details

Target:	PTP4A2
Alternative Name:	PTP4A2 (PTP4A2 Products)
Background:	Background: Protein tyrosine phosphatase which stimulates progression from G1 into S phase during mitosis. Promotes tumors. Inhibits geranylgeranyl transferase type II activity by blocking

Target Details

the association between RABGGTA and RABGGTB.

Aliases: PTP4A2 antibody, PRL2 antibody, PTPCAAX2 antibody, BM-008 antibody, Protein tyrosine phosphatase type IVA 2 antibody, EC 3.1.3.48 antibody, HU-PP-1 antibody, OV-1 antibody, PTP(CAAXII) antibody, Protein-tyrosine phosphatase 4a2 antibody, Protein-tyrosine phosphatase of regenerating liver 2 antibody, PRL-2 antibody

UniProt: [Q12974](#)

Application Details

Application Notes: Recommended dilution: IHC:1:200-1:500, IF:1:50-1:200,

Restrictions: For Research Use only

Handling

Format: Liquid

Buffer: Preservative: 0.03 % Proclin 300
Constituents: 50 % Glycerol, 0.01M PBS, pH 7.4

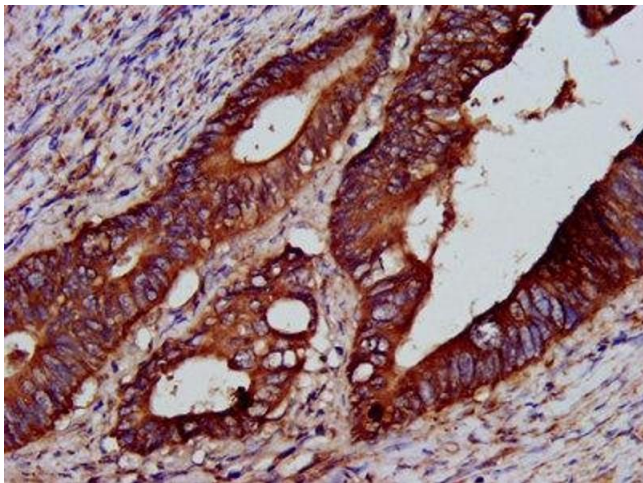
Preservative: ProClin

Precaution of Use: This product contains ProClin: a POISONOUS AND HAZARDOUS SUBSTANCE which should be handled by trained staff only.

Storage: -20 °C,-80 °C

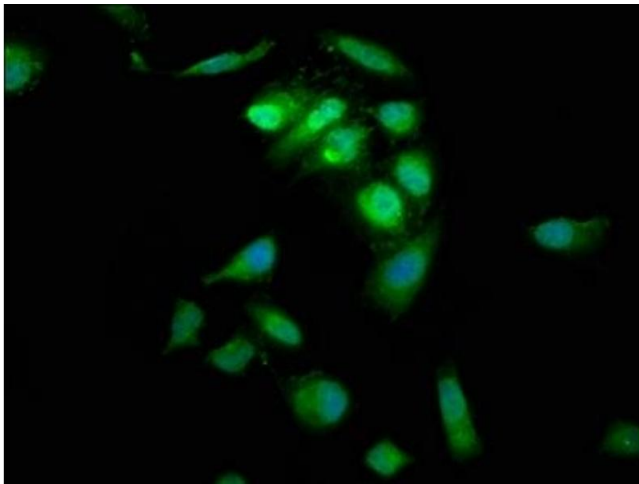
Storage Comment: Upon receipt, store at -20°C or -80°C. Avoid repeated freeze.

Images



Immunohistochemistry

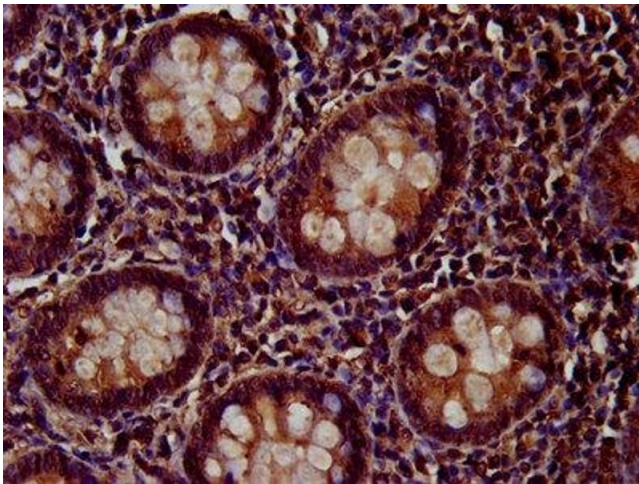
Image 1. IHC image of ABIN7166237 diluted at 1:200 and staining in paraffin-embedded human colon cancer performed on a Leica Bond™ system. After dewaxing and hydration, antigen retrieval was mediated by high pressure in a citrate buffer (pH 6.0). Section was blocked with 10% normal goat serum 30min at RT. Then primary antibody (1% BSA) was incubated at 4°C overnight. The primary is detected by a biotinylated secondary antibody and



visualized using an HRP conjugated SP system.

Immunofluorescence

Image 2. Immunofluorescence staining of HeLa cells with ABIN7166237 at 1:66, counter-stained with DAPI. The cells were fixed in 4% formaldehyde, permeabilized using 0.2% Triton X-100 and blocked in 10% normal Goat Serum. The cells were then incubated with the antibody overnight at 4°C. The secondary antibody was Alexa Fluor 488-conjugated AffiniPure Goat Anti-Rabbit IgG(H+L).



Immunohistochemistry

Image 3. IHC image of ABIN7166237 diluted at 1:200 and staining in paraffin-embedded human appendix tissue performed on a Leica Bond™ system. After dewaxing and hydration, antigen retrieval was mediated by high pressure in a citrate buffer (pH 6.0). Section was blocked with 10% normal goat serum 30min at RT. Then primary antibody (1% BSA) was incubated at 4°C overnight. The primary is detected by a biotinylated secondary antibody and visualized using an HRP conjugated SP system.