

Datasheet for ABIN7166328
anti-WWC2 antibody (AA 828-1127)[Go to Product page](#)

2 Images

Overview

Quantity:	100 µg
Target:	WWC2
Binding Specificity:	AA 828-1127
Reactivity:	Human
Host:	Rabbit
Clonality:	Polyclonal
Conjugate:	This WWC2 antibody is un-conjugated
Application:	ELISA, Immunohistochemistry (IHC), Immunofluorescence (IF)

Product Details

Immunogen:	Recombinant Human Protein WWC2 protein (828-1127AA)
Isotype:	IgG
Cross-Reactivity:	Human
Purification:	>95%, Protein G purified

Target Details

Target:	WWC2
Alternative Name:	WWC2 (WWC2 Products)
Background:	BH-3-only member B antibody, BH3 only member B protein antibody, BOMB antibody, Protein WWC2 antibody, WW and C2 domain containing 2 antibody, WW domain-containing protein 2

Target Details

antibody, wwc2 antibody, WWC2_HUMAN antibody

UniProt: [Q6AWC2](#)

Application Details

Application Notes: Recommended dilution: IHC:1:20-1:200, IF:1:50-1:200,

Restrictions: For Research Use only

Handling

Format: Liquid

Buffer: Preservative: 0.03 % Proclin 300
Constituents: 50 % Glycerol, 0.01M PBS, pH 7.4

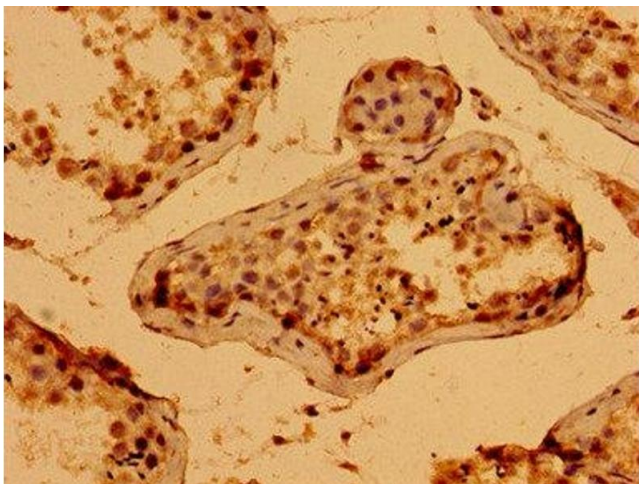
Preservative: ProClin

Precaution of Use: This product contains ProClin: a POISONOUS AND HAZARDOUS SUBSTANCE which should be handled by trained staff only.

Storage: -20 °C,-80 °C

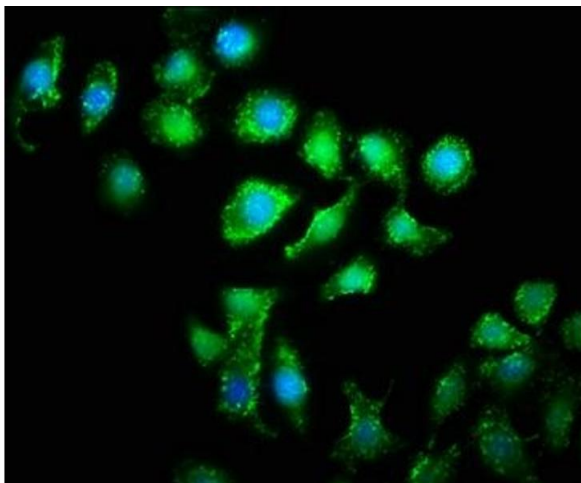
Storage Comment: Upon receipt, store at -20°C or -80°C. Avoid repeated freeze.

Images



Immunohistochemistry

Image 1. Immunohistochemistry of paraffin-embedded human testis tissue using ABIN7166328 at dilution of 1:100



Immunofluorescence

Image 2. Immunofluorescence staining of A549 cells with ABIN7166328 at 1:133, counter-stained with DAPI. The cells were fixed in 4% formaldehyde, permeabilized using 0.2% Triton X-100 and blocked in 10% normal Goat Serum. The cells were then incubated with the antibody overnight at 4°C. The secondary antibody was Alexa Fluor 488-conjugated AffiniPure Goat Anti-Rabbit IgG(H+L).