

Datasheet for ABIN7166333  
**anti-RP2 antibody (AA 1-350)**[Go to Product page](#)

## 2 Images

## Overview

Quantity:	100 µL
Target:	RP2
Binding Specificity:	AA 1-350
Reactivity:	Human
Host:	Rabbit
Clonality:	Polyclonal
Conjugate:	This RP2 antibody is un-conjugated
Application:	ELISA, Immunohistochemistry (IHC), Immunofluorescence (IF)

## Product Details

Immunogen:	Recombinant Human Protein XRP2 protein (1-350AA)
Isotype:	IgG
Cross-Reactivity:	Human
Purification:	Antigen Affinity Purified

## Target Details

Target:	RP2
Alternative Name:	RP2 ( <a href="#">RP2 Products</a> )
Background:	Background: Acts as a GTPase-activating protein (GAP) involved in trafficking between the Golgi and the ciliary membrane. Involved in localization of proteins, such as NPHP3, to the

## Target Details

cilium membrane by inducing hydrolysis of GTP ARL3, leading to the release of UNC119 (or UNC119B). Acts as a GTPase-activating protein (GAP) for tubulin in concert with tubulin-specific chaperone C, but does not enhance tubulin heterodimerization. Acts as guanine nucleotide dissociation inhibitor towards ADP-ribosylation factor-like proteins.

Aliases: RP2 antibody, Protein XRP2 antibody

UniProt: [O75695](#)

Pathways: [Nucleotide Phosphorylation](#), [Ribonucleoside Biosynthetic Process](#)

## Application Details

Application Notes: Recommended dilution: IHC:1:20-1:200, IF:1:50-1:200,

Restrictions: For Research Use only

## Handling

Format: Liquid

Buffer: PBS with 0.02 % sodium azide, 50 % glycerol, pH 7.3.

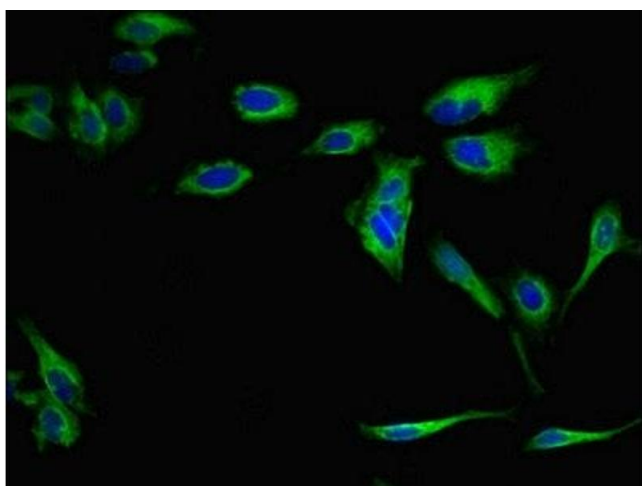
Preservative: Sodium azide

Precaution of Use: This product contains Sodium azide: a POISONOUS AND HAZARDOUS SUBSTANCE which should be handled by trained staff only.

Storage: -20 °C,-80 °C

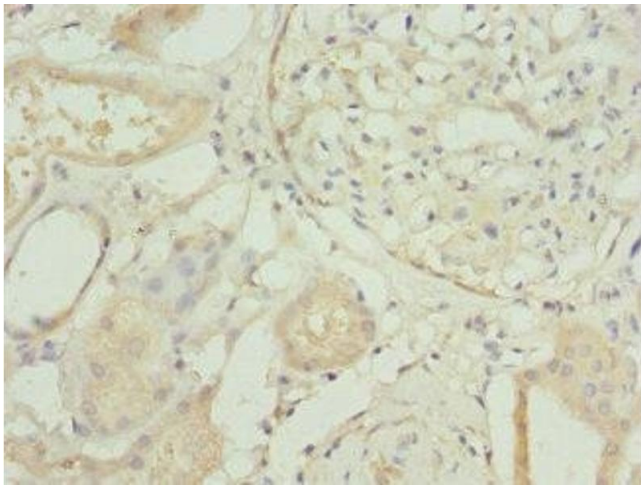
Storage Comment: Upon receipt, store at -20°C or -80°C. Avoid repeated freeze.

## Images



### Immunofluorescence

**Image 1.** Immunofluorescent analysis of Hela cells using ABIN7166333 at dilution of 1:100 and Alexa Fluor 488-conjugated AffiniPure Goat Anti-Rabbit IgG(H+L)



#### Immunohistochemistry

**Image 2.** Immunohistochemistry of paraffin-embedded human kidney tissue using ABIN7166333 at dilution of 1:100