

Datasheet for ABIN7166346
anti-YIPF5 antibody (AA 1-124)



[Go to Product page](#)

2 Images

Overview

Quantity:	100 µg
Target:	YIPF5
Binding Specificity:	AA 1-124
Reactivity:	Human
Host:	Rabbit
Clonality:	Polyclonal
Conjugate:	This YIPF5 antibody is un-conjugated
Application:	ELISA, Western Blotting (WB), Immunofluorescence (IF)

Product Details

Immunogen:	Recombinant Human Protein YIPF5 protein (1-124AA)
Isotype:	IgG
Cross-Reactivity:	Human, Mouse
Purification:	>95%, Protein G purified

Target Details

Target:	YIPF5
Alternative Name:	YIPF5 (YIPF5 Products)
Background:	Background: Plays a role in transport between endoplasmic reticulum and Golgi. Aliases: FinGER5 antibody, Five pass transmembrane protein localizing in the Golgi apparatus

Target Details

and the endoplasmic reticulum 5 antibody, Five-pass transmembrane protein localizing in the Golgi apparatus and the endoplasmic reticulum 5 antibody, Golgi membrane protein SB140 antibody, Protein YIPF5 antibody, SB140 antibody, SMAP 5 antibody, SMAP-5 antibody, SMAP5 antibody, Smooth muscle cell associated protein 5 antibody, Smooth muscle cell-associated protein 5 antibody, Yip1 domain family member 5 antibody, YIP1 family member 5 antibody, YIP1A antibody, yipf5 antibody, YIPF5_HUMAN antibody, YPT interacting protein 1 A antibody, YPT-interacting protein 1 A antibody

UniProt: [Q969M3](#)

Application Details

Application Notes: Recommended dilution: WB:1:1000-1:5000, IF:1:50-1:200,

Restrictions: For Research Use only

Handling

Format: Liquid

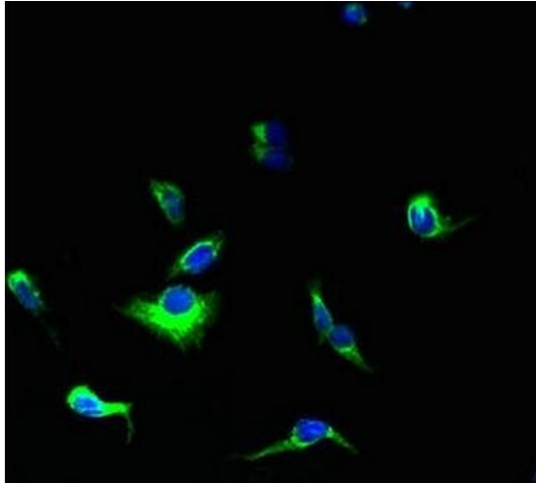
Buffer: Preservative: 0.03 % Proclin 300
Constituents: 50 % Glycerol, 0.01M PBS, PH 7.4

Preservative: ProClin

Precaution of Use: This product contains ProClin: a POISONOUS AND HAZARDOUS SUBSTANCE which should be handled by trained staff only.

Storage: -20 °C,-80 °C

Storage Comment: Upon receipt, store at -20°C or -80°C. Avoid repeated freeze.



Immunofluorescence

Image 1. Immunofluorescent analysis of HepG2 cells using ABIN7166346 at dilution of 1:100 and Alexa Fluor 488-conjugated AffiniPure Goat Anti-Rabbit IgG(H+L)



Western Blotting

Image 2. Western blot All lanes: YIPF5 antibody at 5 µg/mL + Mouse liver tissue Secondary Goat polyclonal to rabbit IgG at 1/10000 dilution Predicted band size: 28, 22, 30 kDa Observed band size: 28 kDa