



[Go to Product page](#)

Datasheet for ABIN7166350
anti-YIPF6 antibody (AA 2-84)

3 Images

Overview

Quantity:	100 µg
Target:	YIPF6
Binding Specificity:	AA 2-84
Reactivity:	Human
Host:	Rabbit
Clonality:	Polyclonal
Conjugate:	This YIPF6 antibody is un-conjugated
Application:	ELISA, Immunohistochemistry (IHC), Immunofluorescence (IF)

Product Details

Immunogen:	Recombinant Human Protein YIPF6 protein (2-84AA)
Isotype:	IgG
Cross-Reactivity:	Human
Purification:	>95%, Protein G purified

Target Details

Target:	YIPF6
Alternative Name:	YIPF6 (YIPF6 Products)
Background:	Background: May be required for stable YIPF1 and YIPF2 protein expression. Aliases: FinGER6 antibody, Protein YIPF6 antibody, Yip1 domain family member 6 antibody,

Target Details

YIP1 family member 6 antibody, Yipf6 antibody, YIPF6_HUMAN antibody

UniProt: [Q96EC8](#)

Application Details

Application Notes: Recommended dilution: IHC:1:20-1:200, IF:1:50-1:200,

Restrictions: For Research Use only

Handling

Format: Liquid

Buffer: Preservative: 0.03 % Proclin 300
Constituents: 50 % Glycerol, 0.01M PBS, PH 7.4

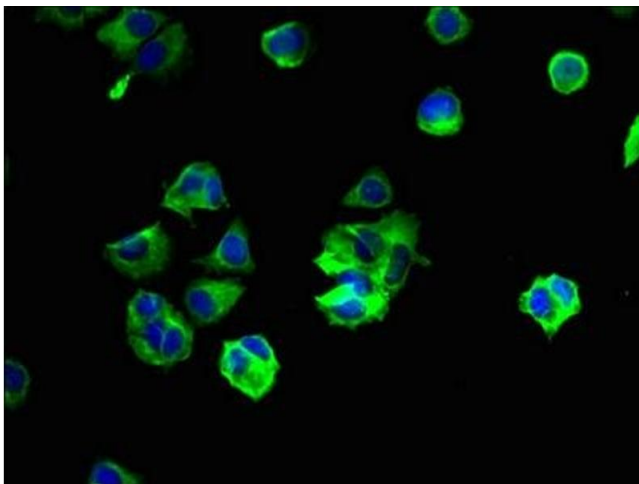
Preservative: ProClin

Precaution of Use: This product contains ProClin: a POISONOUS AND HAZARDOUS SUBSTANCE which should be handled by trained staff only.

Storage: -20 °C,-80 °C

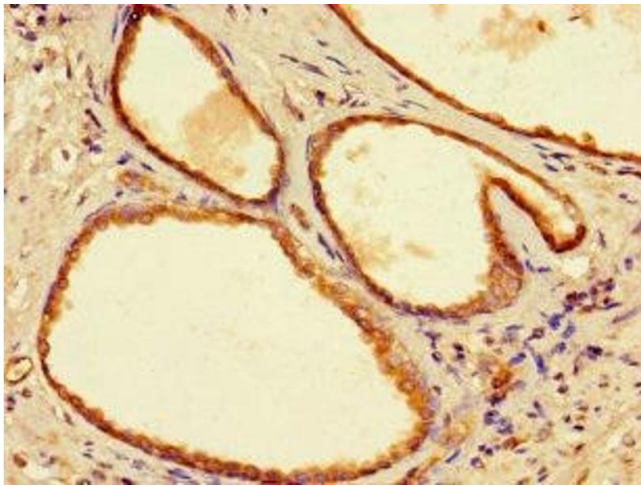
Storage Comment: Upon receipt, store at -20°C or -80°C. Avoid repeated freeze.

Images



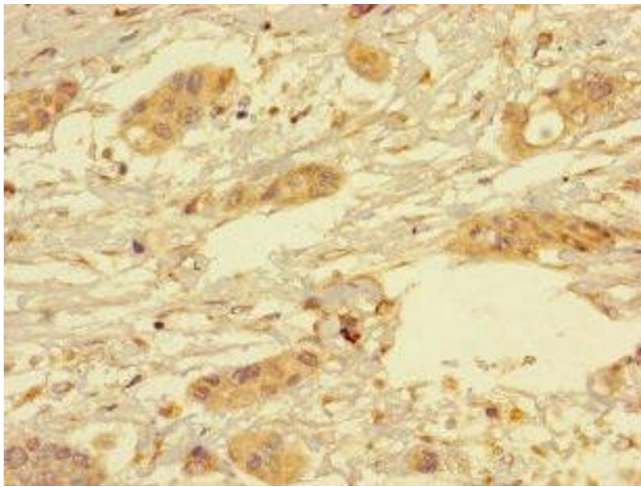
Immunofluorescence

Image 1. Immunofluorescent analysis of MCF-7 cells using ABIN7166350 at dilution of 1:100 and Alexa Fluor 488-conjugated AffiniPure Goat Anti-Rabbit IgG(H+L)



Immunohistochemistry

Image 2. Immunohistochemistry of paraffin-embedded human prostate cancer using ABIN7166350 at dilution of 1:100



Immunohistochemistry

Image 3. Immunohistochemistry of paraffin-embedded human pancreatic cancer using ABIN7166350 at dilution of 1:100