



[Go to Product page](#)

Datasheet for ABIN7166362
anti-YPEL5 antibody (AA 1-121)

1 Image

Overview

| | |
|----------------------|--------------------------------------|
| Quantity: | 100 µg |
| Target: | YPEL5 |
| Binding Specificity: | AA 1-121 |
| Reactivity: | Human |
| Host: | Rabbit |
| Clonality: | Polyclonal |
| Conjugate: | This YPEL5 antibody is un-conjugated |
| Application: | ELISA, Immunohistochemistry (IHC) |

Product Details

| | |
|-------------------|---|
| Immunogen: | Recombinant Human Protein yippee-like 5 protein (1-121AA) |
| Isotype: | IgG |
| Cross-Reactivity: | Human |
| Purification: | >95%, Protein G purified |

Target Details

| | |
|-------------------|--|
| Target: | YPEL5 |
| Alternative Name: | YPEL5 (YPEL5 Products) |
| Background: | Background: extracellular region, ficolin-1-rich granule lumen, tertiary granule lumen, neutrophil degranulation |

Target Details

Aliases: YPEL5 antibody, CGI-127Protein yippee-like 5 antibody

UniProt: [P62699](#)

Application Details

Application Notes: Recommended dilution: IHC:1:200-1:500,

Restrictions: For Research Use only

Handling

Format: Liquid

Buffer: Preservative: 0.03 % Proclin 300
Constituents: 50 % Glycerol, 0.01M PBS, pH 7.4

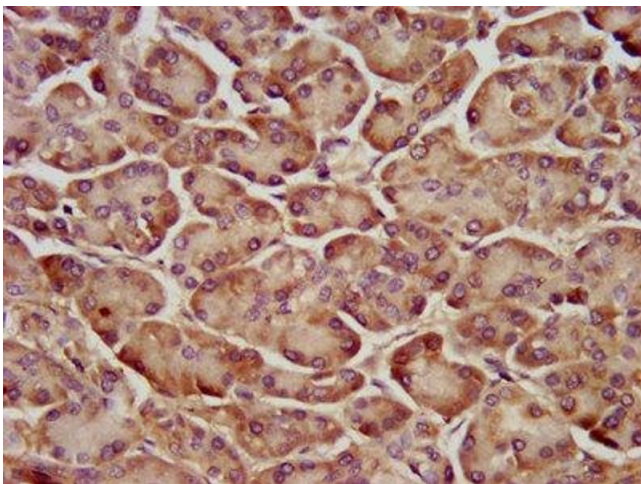
Preservative: ProClin

Precaution of Use: This product contains ProClin: a POISONOUS AND HAZARDOUS SUBSTANCE which should be handled by trained staff only.

Storage: -20 °C,-80 °C

Storage Comment: Upon receipt, store at -20°C or -80°C. Avoid repeated freeze.

Images



Immunohistochemistry

Image 1. IHC image of ABIN7166362 diluted at 1:200 and staining in paraffin-embedded human pancreatic tissue performed on a Leica Bond™ system. After dewaxing and hydration, antigen retrieval was mediated by high pressure in a citrate buffer (pH 6.0). Section was blocked with 10% normal goat serum 30min at RT. Then primary antibody (1% BSA) was incubated at 4°C overnight. The primary is detected by a biotinylated secondary antibody and visualized using an HRP conjugated SP system.