

Datasheet for ABIN7166389
anti-PADI2 antibody (AA 1-665)

3 Images

[Go to Product page](#)

Overview

Quantity:	100 µg
Target:	PADI2
Binding Specificity:	AA 1-665
Reactivity:	Human
Host:	Rabbit
Clonality:	Polyclonal
Conjugate:	This PADI2 antibody is un-conjugated
Application:	Western Blotting (WB), ELISA, Immunohistochemistry (IHC), Immunofluorescence (IF)

Product Details

Immunogen:	Recombinant Human Protein-arginine deiminase type-2 protein (1-665AA)
Isotype:	IgG
Cross-Reactivity:	Human
Purification:	>95%, Protein G purified

Target Details

Target:	PADI2
Alternative Name:	PADI2 (PADI2 Products)
Background:	Background: Catalyzes the deimination of arginine residues of proteins. Aliases: KIAA0994 antibody, OTTHUMP00000044625 antibody, PAD 2 antibody, PAD H19

Target Details

antibody, PAD-H19 antibody, PAD2 antibody, PADI 2 antibody, Padi2 antibody, PADI2 protein antibody, PADI2_HUMAN antibody, PDI 2 antibody, PDI2 antibody, Peptidylarginine deiminase type II antibody, Peptidyl arginine deiminase II antibody, Peptidyl arginine deiminase type II antibody, Peptidylarginine deiminase II antibody, Protein arginine deiminase antibody, Protein arginine deiminase type 2 antibody, Protein arginine deiminase type II antibody, Protein-arginine deiminase type II antibody, Protein-arginine deiminase type-2 antibody

UniProt: [Q9Y2J8](#)

Application Details

Application Notes: Recommended dilution: WB:1:500-1:5000, IHC:1:200-1:500, IF:1:50-1:200,

Restrictions: For Research Use only

Handling

Format: Liquid

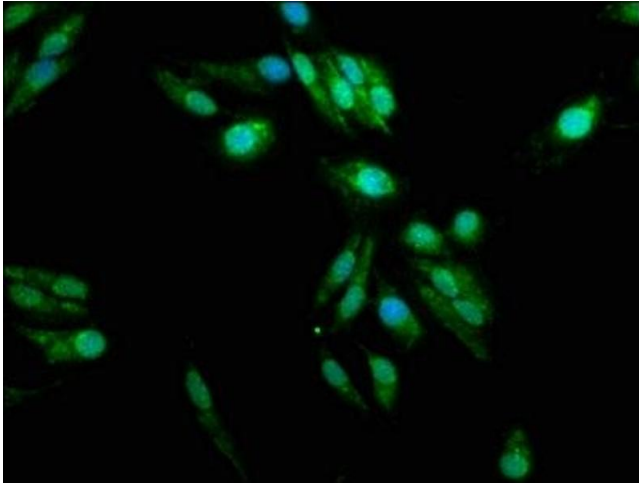
Buffer: Preservative: 0.03 % Proclin 300
Constituents: 50 % Glycerol, 0.01M PBS, PH 7.4

Preservative: ProClin

Precaution of Use: This product contains ProClin: a POISONOUS AND HAZARDOUS SUBSTANCE which should be handled by trained staff only.

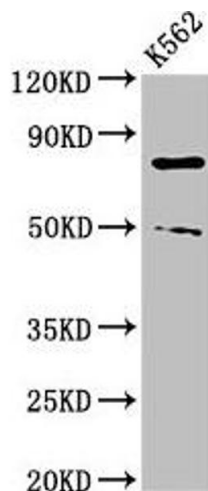
Storage: -20 °C,-80 °C

Storage Comment: Upon receipt, store at -20°C or -80°C. Avoid repeated freeze.



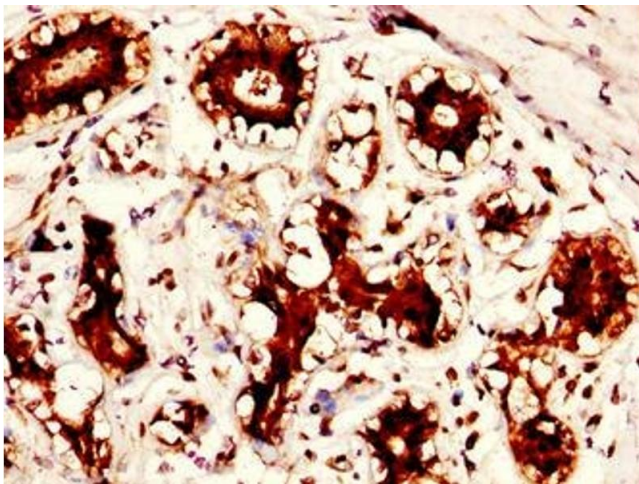
Immunofluorescence

Image 1. Immunofluorescence staining of HeLa cells with ABIN7166389 at 1:100, counter-stained with DAPI. The cells were fixed in 4% formaldehyde, permeabilized using 0.2% Triton X-100 and blocked in 10% normal Goat Serum. The cells were then incubated with the antibody overnight at 4°C. The secondary antibody was Alexa Fluor 488-conjugated AffiniPure Goat Anti-Rabbit IgG(H+L).



Western Blotting

Image 2. Western Blot Positive WB detected in: K562 whole cell lysate. All lanes: PADI2 antibody at 3 µg/mL. Secondary Goat polyclonal to rabbit IgG at 1/50000 dilution. Predicted band size: 76, 50 kDa. Observed band size: 76, 50 kDa.



Immunohistochemistry

Image 3. IHC image of ABIN7166389 diluted at 1:300 and staining in paraffin-embedded human breast cancer performed on a Leica Bond™ system. After dewaxing and hydration, antigen retrieval was mediated by high pressure in a citrate buffer (pH 6.0). Section was blocked with 10% normal goat serum 30min at RT. Then primary antibody (1% BSA) was incubated at 4°C overnight. The primary is detected by a biotinylated secondary antibody and visualized using an HRP conjugated SP system.