

Datasheet for ABIN7166416
anti-TGM4 antibody (AA 1-684)[Go to Product page](#)

2 Images

Overview

Quantity:	100 µg
Target:	TGM4
Binding Specificity:	AA 1-684
Reactivity:	Human
Host:	Rabbit
Clonality:	Polyclonal
Conjugate:	This TGM4 antibody is un-conjugated
Application:	ELISA, Immunohistochemistry (IHC), Immunofluorescence (IF)

Product Details

Immunogen:	Recombinant Human Protein-glutamine gamma-glutamyltransferase 4 protein (1-684AA)
Isotype:	IgG
Cross-Reactivity:	Human
Purification:	>95%, Protein G purified

Target Details

Target:	TGM4
Alternative Name:	TGM4 (TGM4 Products)
Background:	Background: Associated with the mammalian reproductive process. Catalyzes the cross-linking of proteins and the conjugation of polyamines to specific proteins in the seminal tract.

Target Details

Aliases: Dorsal prostate transglutaminase antibody, Dorsal protein 1 antibody, Dp1 antibody, Fibrinolyticase antibody, hTGP antibody, Prostate specific transglutaminase antibody, Prostate transglutaminase antibody, Prostate-specific transglutaminase antibody, Protein glutamine gamma glutamyltransferase 4 antibody, Protein-glutamine gamma-glutamyltransferase 4 antibody, TG(P) antibody, TGase P antibody, TGase-4 antibody, TGase4 antibody, Tgm4 antibody, TGM4_HUMAN antibody, TGP antibody, Transglutaminase 4 (prostate) antibody, Transglutaminase 4 antibody, Transglutaminase P antibody, Transglutaminase, prostate antibody, Transglutaminase-4 antibody

UniProt: [P49221](#)

Application Details

Application Notes: Recommended dilution: IHC:1:200-1:500, IF:1:50-1:200,

Restrictions: For Research Use only

Handling

Format: Liquid

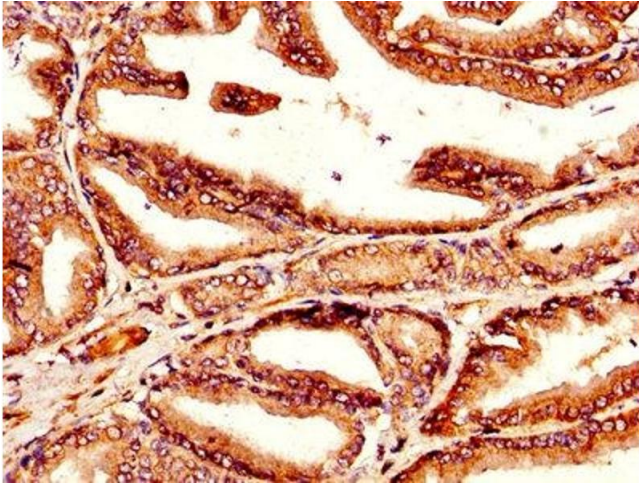
Buffer: Preservative: 0.03 % Proclin 300
Constituents: 50 % Glycerol, 0.01M PBS, PH 7.4

Preservative: ProClin

Precaution of Use: This product contains ProClin: a POISONOUS AND HAZARDOUS SUBSTANCE which should be handled by trained staff only.

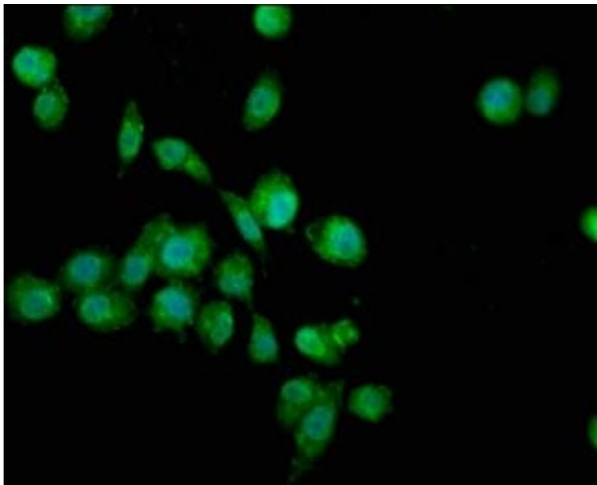
Storage: -20 °C,-80 °C

Storage Comment: Upon receipt, store at -20°C or -80°C. Avoid repeated freeze.



Immunohistochemistry

Image 1. IHC image of ABIN7166416 diluted at 1:300 and staining in paraffin-embedded human prostate tissue performed on a Leica Bond™ system. After dewaxing and hydration, antigen retrieval was mediated by high pressure in a citrate buffer (pH 6.0). Section was blocked with 10% normal goat serum 30min at RT. Then primary antibody (1% BSA) was incubated at 4°C overnight. The primary is detected by a biotinylated secondary antibody and visualized using an HRP conjugated SP system.



Immunofluorescence

Image 2. Immunofluorescence staining of SH-SY5Y cells with ABIN7166416 at 1:100, counter-stained with DAPI. The cells were fixed in 4% formaldehyde, permeabilized using 0.2% Triton X-100 and blocked in 10% normal Goat Serum. The cells were then incubated with the antibody overnight at 4°C. The secondary antibody was Alexa Fluor 488-conjugated AffiniPure Goat Anti-Rabbit IgG(H+L).