

Datasheet for ABIN7166472

**anti-Proteoglycan 4 antibody (AA 25-156)**[Go to Product page](#)**1** Image

## Overview

Quantity:	100 µL
Target:	Proteoglycan 4 (PRG4)
Binding Specificity:	AA 25-156
Reactivity:	Human
Host:	Rabbit
Clonality:	Polyclonal
Conjugate:	This Proteoglycan 4 antibody is un-conjugated
Application:	ELISA, Immunohistochemistry (IHC)

## Product Details

Immunogen:	Recombinant Human Proteoglycan 4 protein (25-156AA)
Isotype:	IgG
Cross-Reactivity:	Human
Purification:	>95%, Protein G purified

## Target Details

Target:	Proteoglycan 4 (PRG4)
Alternative Name:	PRG4 ( <a href="#">PRG4 Products</a> )
Background:	Background: Plays a role in boundary lubrication within articulating joints. Prevents protein deposition onto cartilage from synovial fluid by controlling adhesion-dependent synovial growth

## Target Details

and inhibiting the adhesion of synovial cells to the cartilage surface.

Aliases: PRG4 antibody, MSF antibody, SZP antibody, Proteoglycan 4 antibody, Lubricin antibody, Megakaryocyte-stimulating factor antibody, Superficial zone proteoglycan) [Cleaved into: Proteoglycan 4 C-terminal part] antibody

UniProt: [Q92954](#)

## Application Details

Application Notes: Recommended dilution: IHC:1:200-1:500,

Restrictions: For Research Use only

## Handling

Format: Liquid

Buffer: Preservative: 0.03 % Proclin 300  
Constituents: 50 % Glycerol, 0.01M PBS, PH 7.4

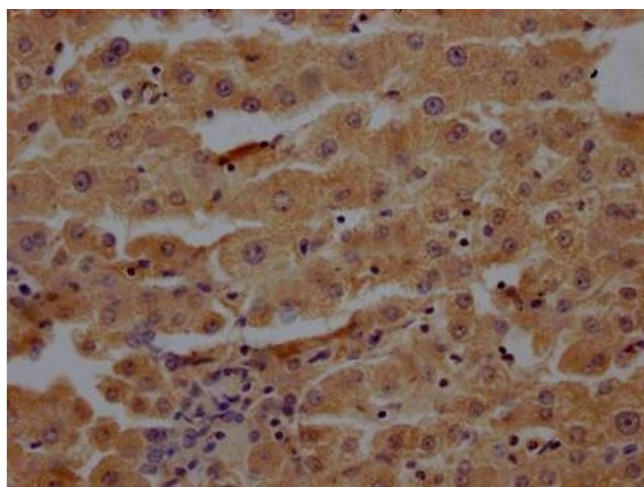
Preservative: ProClin

Precaution of Use: This product contains ProClin: a POISONOUS AND HAZARDOUS SUBSTANCE which should be handled by trained staff only.

Storage: -20 °C,-80 °C

Storage Comment: Upon receipt, store at -20°C or -80°C. Avoid repeated freeze.

## Images



### Immunohistochemistry

**Image 1.** IHC image of ABIN7166472 diluted at 1:200 and staining in paraffin-embedded human liver tissue performed on a Leica Bond™ system. After dewaxing and hydration, antigen retrieval was mediated by high pressure in a citrate buffer ( pH 6.0). Section was blocked with 10 % normal goat serum 30 min at RT. Then primary antibody (1 % BSA) was incubated at 4 °C overnight. The primary is detected by a Goat anti-rabbit polymer IgG labeled by HRP and visualized using 0.05 % DAB.