

Datasheet for ABIN7166480  
**anti-MCF2 antibody (AA 705-925)**[Go to Product page](#)

## 3 Images

## Overview

Quantity:	100 µL
Target:	MCF2
Binding Specificity:	AA 705-925
Reactivity:	Human
Host:	Rabbit
Clonality:	Polyclonal
Conjugate:	This MCF2 antibody is un-conjugated
Application:	ELISA, Immunohistochemistry (IHC), Immunofluorescence (IF)

## Product Details

Immunogen:	Recombinant Human Proto-oncogene DBL protein (705-925AA)
Isotype:	IgG
Cross-Reactivity:	Human
Purification:	Antigen Affinity Purified

## Target Details

Target:	MCF2
Alternative Name:	MCF2 ( <a href="#">MCF2 Products</a> )
Background:	Background: Guanine nucleotide exchange factor (GEF) that modulates the Rho family of GTPases. Promotes the conversion of some member of the Rho family GTPase from the GDP-

## Target Details

bound to the GTP-bound form. Isoform 1 exhibits no activity toward RHOA, RAC1 or CDC42. Isoform 2 exhibits decreased GEF activity toward CDC42. Isoform 3 exhibits a weak but significant activity toward RAC1 and CDC42. Isoform 4 exhibits significant activity toward RHOA and CDC42. The truncated DBL oncogene is active toward RHOA, RAC1 and CDC42. Aliases: MCF2 antibody, DBLProto-oncogene DBL antibody, Proto-oncogene MCF-2) [Cleaved into: MCF2-transforming protein, DBL-transforming protein] antibody

UniProt: [P10911](#)

## Application Details

Application Notes: Recommended dilution: IHC:1:20-1:200, IF:1:50-1:200,

Restrictions: For Research Use only

## Handling

Format: Liquid

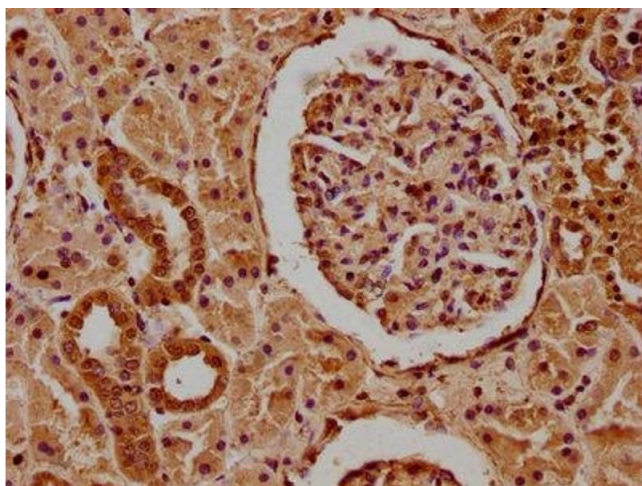
Buffer: Preservative: 0.03 % Proclin 300  
Constituents: 50 % Glycerol, 0.01M PBS, pH 7.4

Preservative: ProClin

Precaution of Use: This product contains ProClin: a POISONOUS AND HAZARDOUS SUBSTANCE which should be handled by trained staff only.

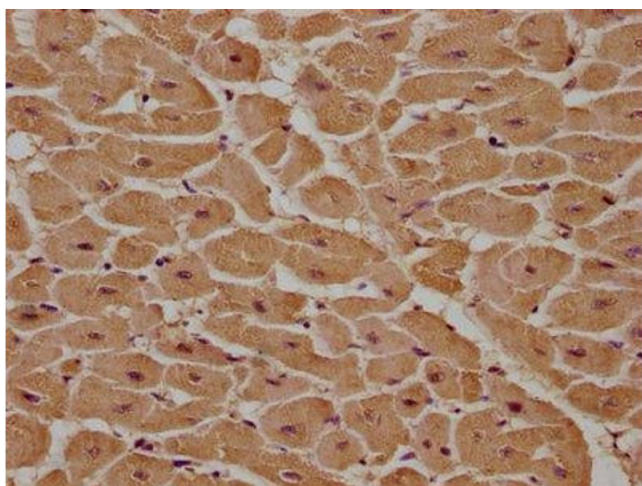
Storage: -20 °C,-80 °C

Storage Comment: Upon receipt, store at -20°C or -80°C. Avoid repeated freeze.



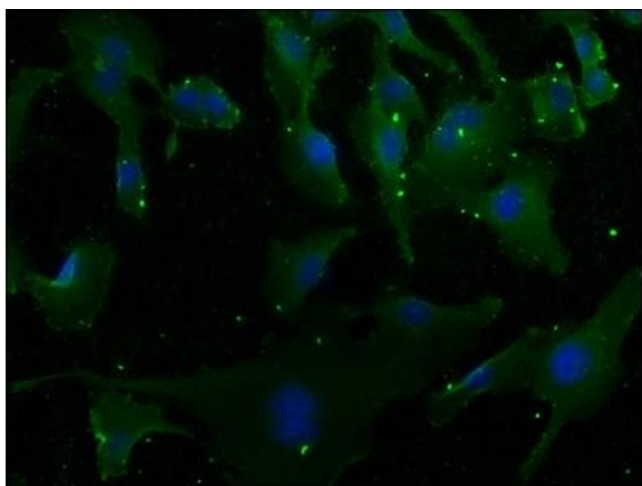
#### Immunohistochemistry

**Image 1.** IHC image of ABIN7166480 diluted at 1:100 and staining in paraffin-embedded human kidney tissue performed on a Leica Bond™ system. After dewaxing and hydration, antigen retrieval was mediated by high pressure in a citrate buffer (pH 6.0). Section was blocked with 10 % normal goat serum 30 min at RT. Then primary antibody (1 % BSA) was incubated at 4 °C overnight. The primary is detected by a biotinylated secondary antibody and visualized using an HRP conjugated SP system.



#### Immunohistochemistry

**Image 2.** IHC image of ABIN7166480 diluted at 1:100 and staining in paraffin-embedded human heart tissue performed on a Leica Bond™ system. After dewaxing and hydration, antigen retrieval was mediated by high pressure in a citrate buffer (pH 6.0). Section was blocked with 10 % normal goat serum 30 min at RT. Then primary antibody (1 % BSA) was incubated at 4 °C overnight. The primary is detected by a biotinylated secondary antibody and visualized using an HRP conjugated SP system.



#### Immunofluorescence

**Image 3.** Immunofluorescence staining of U251 cells with ABIN7166480 at 1:50, counter-stained with DAPI. The cells were fixed in 4 % formaldehyde, permeabilized using 0.2 % Triton X-100 and blocked in 10 % normal Goat Serum. The cells were then incubated with the antibody overnight at 4 °C. The secondary antibody was Alexa Fluor 488-conjugated AffiniPure Goat Anti-Rabbit IgG(H+L).