

Datasheet for ABIN7166493

anti-Ret Proto-Oncogene antibody (AA 29-300)[Go to Product page](#)**2** Images

Overview

Quantity:	100 µL
Target:	Ret Proto-Oncogene (RET)
Binding Specificity:	AA 29-300
Reactivity:	Human
Host:	Rabbit
Clonality:	Polyclonal
Conjugate:	This Ret Proto-Oncogene antibody is un-conjugated
Application:	Western Blotting (WB), ELISA, Immunohistochemistry (IHC)

Product Details

Immunogen:	Recombinant Human Proto-oncogene tyrosine-protein kinase receptor Ret protein (29-300AA)
Isotype:	IgG
Cross-Reactivity:	Human
Purification:	Antigen Affinity Purified

Target Details

Target:	Ret Proto-Oncogene (RET)
Alternative Name:	RET (RET Products)
Background:	Background: Receptor tyrosine-protein kinase involved in numerous cellular mechanisms including cell proliferation, neuronal navigation, cell migration, and cell differentiation upon

Target Details

binding with glial cell derived neurotrophic factor family ligands. Phosphorylates PTK2/FAK1. Regulates both cell death/survival balance and positional information. Required for the molecular mechanisms orchestration during intestine organogenesis, involved in the development of enteric nervous system and renal organogenesis during embryonic life, and promotes the formation of Peyer's patch-like structures, a major component of the gut-associated lymphoid tissue. Modulates cell adhesion via its cleavage by caspase in sympathetic neurons and mediates cell migration in an integrin (e.g. ITGB1 and ITGB3)-dependent manner. Involved in the development of the neural crest. Active in the absence of ligand, triggering apoptosis through a mechanism that requires receptor intracellular caspase cleavage. Acts as a dependence receptor, in the presence of the ligand GDNF in somatotrophs (within pituitary), promotes survival and down regulates growth hormone (GH) production, but triggers apoptosis in absence of GDNF. Regulates nociceptor survival and size. Triggers the differentiation of rapidly adapting (RA) mechanoreceptors. Mediator of several diseases such as neuroendocrine cancers, these diseases are characterized by aberrant integrins-regulated cell migration.

Aliases: C ret antibody, Cadherin family member 12 antibody, Cadherin related family member 16 antibody, CDHF 12 antibody, CDHF12 antibody, CDHR16 antibody, ELKS Fusion gene antibody, HSCR 1 antibody, HSCR1 antibody, Hydroxyaryl protein kinase antibody, MEN2A antibody, MEN2B antibody, MTC 1 antibody, MTC1 antibody, Multiple endocrine neoplasia and medullary thyroid carcinoma 1 antibody, Oncogene RET antibody, Proto oncogene tyrosine protein kinase receptor ret antibody, Proto-oncogene c-Ret antibody, Proto-oncogene tyrosine-protein kinase receptor ret antibody, PTC antibody, RET antibody, RET ELE1 antibody, Ret Proto oncogene antibody, RET transforming sequence antibody, RET_HUMAN antibody, RET51 antibody, RET9 antibody, tyrosine-protein kinase receptor ret antibody

UniProt:	P07949
Pathways:	RTK Signaling , Dopaminergic Neurogenesis , Regulation of Cell Size , Tube Formation

Application Details

Application Notes:	Recommended dilution: WB:1:500-1:2000, IHC:1:20-1:200,
Restrictions:	For Research Use only

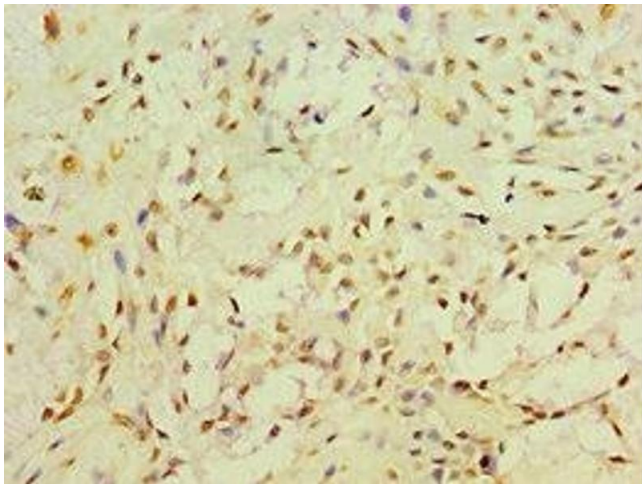
Handling

Format:	Liquid
---------	--------

Handling

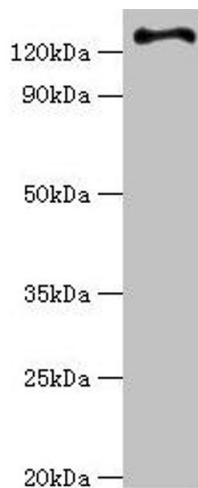
Buffer:	PBS with 0.02 % sodium azide, 50 % glycerol, pH 7.3.
Preservative:	Sodium azide
Precaution of Use:	This product contains Sodium azide: a POISONOUS AND HAZARDOUS SUBSTANCE which should be handled by trained staff only.
Storage:	-20 °C,-80 °C
Storage Comment:	Upon receipt, store at -20°C or -80°C. Avoid repeated freeze.

Images



Immunohistochemistry

Image 1. Immunohistochemistry of paraffin-embedded human breast cancer using ABIN7166493 at dilution of 1:100



Western Blotting

Image 2. Western blot All lanes: RET antibody at 6 µg/mL + Hela whole cell lysate Secondary Goat polyclonal to rabbit IgG at 1/10000 dilution Predicted band size: 125, 120 kDa Observed band size: 125 kDa