

Datasheet for ABIN7166495
anti-ROS1 antibody (AA 79-248)[Go to Product page](#)

1 Image

Overview

Quantity:	100 µL
Target:	ROS1
Binding Specificity:	AA 79-248
Reactivity:	Human
Host:	Rabbit
Clonality:	Polyclonal
Conjugate:	This ROS1 antibody is un-conjugated
Application:	ELISA, Immunofluorescence (IF)

Product Details

Immunogen:	Recombinant Human Proto-oncogene tyrosine-protein kinase ROS protein (79-248AA)
Isotype:	IgG
Cross-Reactivity:	Human
Purification:	>95%, Protein G purified

Target Details

Target:	ROS1
Alternative Name:	ROS1 (ROS1 Products)
Background:	Background: Orphan receptor tyrosine kinase (RTK) that plays a role in epithelial cell differentiation and regionalization of the proximal epididymal epithelium. May activate several

Target Details

downstream signaling pathways related to cell differentiation, proliferation, growth and survival including the PI3 kinase-mTOR signaling pathway. Mediates the phosphorylation of PTPN11, an activator of this pathway. May also phosphorylate and activate the transcription factor STAT3 to control anchorage-independent cell growth. Mediates the phosphorylation and the activation of VAV3, a guanine nucleotide exchange factor regulating cell morphology. May activate other downstream signaling proteins including AKT1, MAPK1, MAPK3, IRS1 and PLCG2.

Aliases: c ros 1 antibody, c ros antibody, c ros oncogene 1 receptor tyrosine kinase antibody, c Ros receptor tyrosine kinase antibody, c ros1 antibody, MCF 3 antibody, MCF3 antibody, Oncogene ROS antibody, OTTHUMP00000017814 antibody, OTTHUMP00000017815 antibody, OTTHUMP00000040389 antibody, Proto oncogene c ros 1 protein antibody, Proto oncogene c Ros antibody, Proto oncogene tyrosine protein kinase ROS antibody, Proto oncogene tyrosine protein kinase ROS precursor antibody, Proto-oncogene c-Ros-1 antibody, Proto-oncogene tyrosine-protein kinase ROS antibody, Receptor tyrosine kinase c ros oncogene 1 antibody, Ros 1 antibody, ROS 1C antibody, ROS antibody, ROS proto oncogene 1 , receptor tyrosine kinase antibody, ROS_HUMAN antibody, ROS1 antibody, ROS1C antibody, Transmembrane tyrosine specific protein kinase antibody, v ros avian UR2 sarcoma virus oncogene homolog 1 antibody, v ros UR2 sarcoma virus oncogene homolog 1 antibody

UniProt: [P08922](#)

Pathways: [RTK Signaling](#)

Application Details

Application Notes: Recommended dilution: IF:1:50-1:200,

Restrictions: For Research Use only

Handling

Format: Liquid

Buffer: Preservative: 0.03 % Proclin 300
Constituents: 50 % Glycerol, 0.01M PBS, pH 7.4

Preservative: ProClin

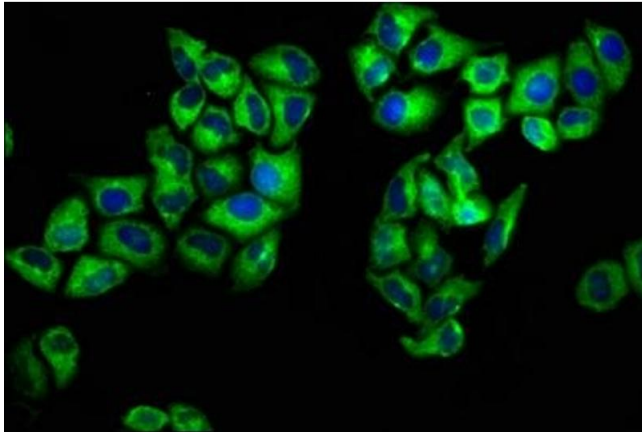
Precaution of Use: This product contains ProClin: a POISONOUS AND HAZARDOUS SUBSTANCE which should be handled by trained staff only.

Storage: -20 °C,-80 °C

Handling

Storage Comment: Upon receipt, store at -20°C or -80°C. Avoid repeated freeze.

Images



Immunofluorescence

Image 1. Immunofluorescence staining of HeLa cells with ABIN7166495 at 1:133, counter-stained with DAPI. The cells were fixed in 4 % formaldehyde, permeabilized using 0.2 % Triton X-100 and blocked in 10 % normal Goat Serum. The cells were then incubated with the antibody overnight at 4 °C. The secondary antibody was Alexa Fluor 488-conjugated AffiniPure Goat Anti-Rabbit IgG(H+L).