

Datasheet for ABIN7166511
anti-PCDHA1 antibody (AA 276-324)[Go to Product page](#)

1 Image

Overview

Quantity:	100 µL
Target:	PCDHA1
Binding Specificity:	AA 276-324
Reactivity:	Human
Host:	Rabbit
Clonality:	Polyclonal
Conjugate:	This PCDHA1 antibody is un-conjugated
Application:	ELISA, Immunofluorescence (IF)

Product Details

Immunogen:	Recombinant Human Protocadherin alpha-10 protein (276-324AA)
Isotype:	IgG
Cross-Reactivity:	Human
Purification:	>95%, Protein G purified

Target Details

Target:	PCDHA1
Alternative Name:	PCDHA1 (PCDHA1 Products)
Background:	Background: Potential calcium-dependent cell-adhesion protein. May be involved in the establishment and maintenance of specific neuronal connections in the brain.

Target Details

Aliases: PCDHA10 antibody, CNRS8 antibody, Protocadherin alpha-10 antibody, PCDH-alpha-10 antibody

UniProt: [Q9Y5I2](#)

Application Details

Application Notes: Recommended dilution: IF:1:100-1:500,

Restrictions: For Research Use only

Handling

Format: Liquid

Buffer: Preservative: 0.03 % Proclin 300
Constituents: 50 % Glycerol, 0.01M PBS, PH 7.4

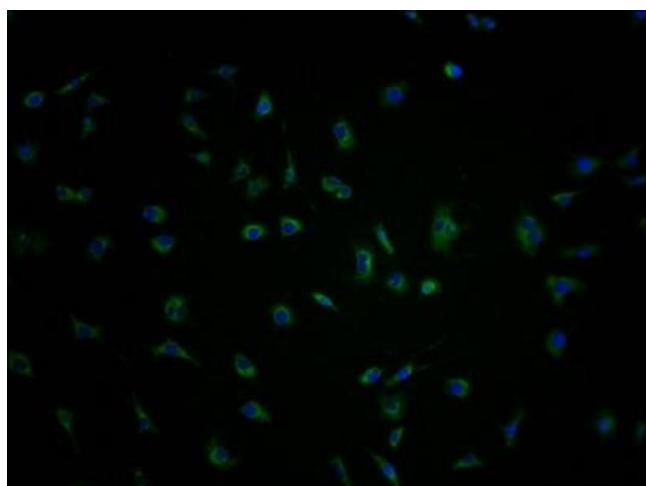
Preservative: ProClin

Precaution of Use: This product contains ProClin: a POISONOUS AND HAZARDOUS SUBSTANCE which should be handled by trained staff only.

Storage: -20 °C,-80 °C

Storage Comment: Upon receipt, store at -20°C or -80°C. Avoid repeated freeze.

Images



Immunofluorescence

Image 1. Immunofluorescence staining of SH-SY5Y cells with ABIN7166511 at 1:100, counter-stained with DAPI. The cells were fixed in 4 % formaldehyde and blocked in 10 % normal Goat Serum. The cells were then incubated with the antibody overnight at 4 °C. The secondary antibody was Alexa Fluor 488-conjugated AffiniPure Goat Anti-Rabbit IgG(H+L).