

Datasheet for ABIN7166598
anti-PEAK1 antibody (AA 715-881)[Go to Product page](#)

1 Image

Overview

Quantity:	100 µg
Target:	PEAK1
Binding Specificity:	AA 715-881
Reactivity:	Human
Host:	Rabbit
Clonality:	Polyclonal
Conjugate:	This PEAK1 antibody is un-conjugated
Application:	ELISA, Immunohistochemistry (IHC)

Product Details

Immunogen:	Recombinant Human Pseudopodium-enriched atypical kinase 1 protein (715-881AA)
Isotype:	IgG
Cross-Reactivity:	Human
Purification:	>95%, Protein G purified

Target Details

Target:	PEAK1
Alternative Name:	PEAK1 (PEAK1 Products)
Background:	Background: Tyrosine kinase that may play a role in cell spreading and migration on fibronectin. May directly or indirectly affect phosphorylation levels of cytoskeleton-associated proteins

Target Details

MAPK1/ERK and PXN.

Aliases: FLJ21140 antibody, FLJ34483 antibody, KIAA2002 antibody, NKF3 kinase family member antibody, PEAK1 antibody, PEAK1_HUMAN antibody, pseudopodium enriched atypical kinase antibody, Pseudopodium-enriched atypical kinase 1 antibody, SGK269 antibody, Sugen kinase 269 antibody, Tyrosine-protein kinase Sgk269 antibody

UniProt: [Q9H792](#)

Application Details

Application Notes: Recommended dilution: IHC:1:200-1:500,

Restrictions: For Research Use only

Handling

Format: Liquid

Buffer: Preservative: 0.03 % Proclin 300
Constituents: 50 % Glycerol, 0.01M PBS, pH 7.4

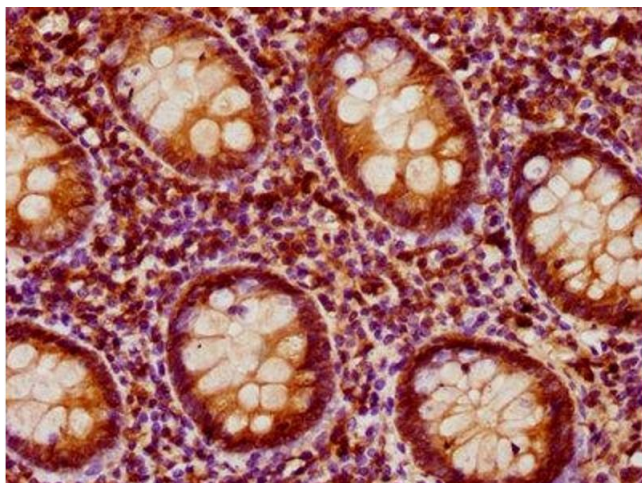
Preservative: ProClin

Precaution of Use: This product contains ProClin: a POISONOUS AND HAZARDOUS SUBSTANCE which should be handled by trained staff only.

Storage: -20 °C,-80 °C

Storage Comment: Upon receipt, store at -20°C or -80°C. Avoid repeated freeze.

Images



Immunohistochemistry

Image 1. IHC image of ABIN7166598 diluted at 1:200 and staining in paraffin-embedded human appendix tissue performed on a Leica Bond™ system. After dewaxing and hydration, antigen retrieval was mediated by high pressure in a citrate buffer (pH 6.0). Section was blocked with 10% normal goat serum 30min at RT. Then primary antibody (1% BSA) was incubated at 4°C overnight. The primary is detected by a biotinylated secondary antibody and

visualized using an HRP conjugated SP system.