



[Go to Product page](#)

Datasheet for ABIN7166602

anti-PSORS1C1 antibody (AA 1-152)

2 Images

Overview

Quantity:	100 µg
Target:	PSORS1C1
Binding Specificity:	AA 1-152
Reactivity:	Human
Host:	Rabbit
Clonality:	Polyclonal
Conjugate:	This PSORS1C1 antibody is un-conjugated
Application:	ELISA, Immunohistochemistry (IHC)

Product Details

Immunogen:	Recombinant Human Psoriasis susceptibility 1 candidate gene 1 protein (1-152AA)
Isotype:	IgG
Cross-Reactivity:	Human
Purification:	>95%, Protein G purified

Target Details

Target:	PSORS1C1
Alternative Name:	PSORS1C1 (PSORS1C1 Products)
Background:	PSORS1C1 antibody, C6orf16 antibody, SEEK1 antibody, Psoriasis susceptibility 1 candidate gene 1 protein antibody, Protein SEEK1 antibody

Target Details

UniProt: [Q9UIG5](#)

Application Details

Application Notes: Recommended dilution: IHC:1:20-1:200,

Restrictions: For Research Use only

Handling

Format: Liquid

Buffer: Preservative: 0.03 % Proclin 300
Constituents: 50 % Glycerol, 0.01M PBS, pH 7.4

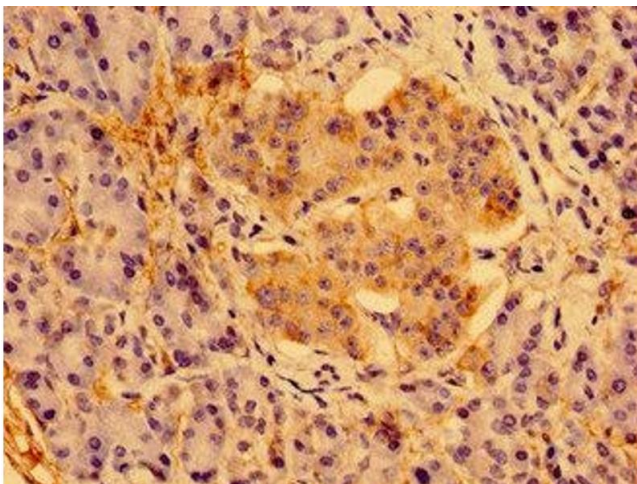
Preservative: ProClin

Precaution of Use: This product contains ProClin: a POISONOUS AND HAZARDOUS SUBSTANCE which should be handled by trained staff only.

Storage: -20 °C,-80 °C

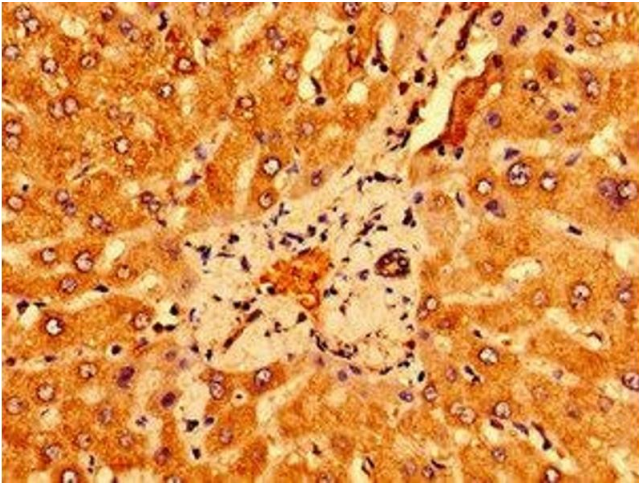
Storage Comment: Upon receipt, store at -20°C or -80°C. Avoid repeated freeze.

Images



Immunohistochemistry

Image 1. Immunohistochemistry of paraffin-embedded human pancreatic tissue using ABIN7166602 at dilution of 1:100



Immunohistochemistry

Image 2. Immunohistochemistry of paraffin-embedded human liver tissue using ABIN7166602 at dilution of 1:100