



[Go to Product page](#)

Datasheet for ABIN7166606  
**anti-GULP1 antibody (AA 199-279)**

2 Images

Overview

Quantity:	100 µg
Target:	GULP1
Binding Specificity:	AA 199-279
Reactivity:	Human
Host:	Rabbit
Clonality:	Polyclonal
Conjugate:	This GULP1 antibody is un-conjugated
Application:	Western Blotting (WB), ELISA, Immunofluorescence (IF)

Product Details

Immunogen:	Recombinant Human PTB domain-containing engulfment adapter protein 1 protein (199-279AA)
Isotype:	IgG
Cross-Reactivity:	Human, Rat
Purification:	>95%, Protein G purified

Target Details

Target:	GULP1
Alternative Name:	GULP1 ( <a href="#">GULP1 Products</a> )
Background:	Background: May function as an adapter protein. Required for efficient phagocytosis of

## Target Details

---

apoptotic cells. Modulates cellular glycosphingolipid and cholesterol transport. May play a role in the internalization and endosomal trafficking of various LRP1 ligands, such as PSAP.

Increases cellular levels of GTP-bound ARF6.

Aliases: CED6 antibody, Cell death protein 6 homolog antibody, Engulfment adapter protein antibody, Engulfment adaptor PTB domain containing 1 antibody, GULP antibody, GULP, engulfment adaptor PTB domain containing 1 antibody, GULP1 antibody, GULP1\_HUMAN antibody, Protein GULP antibody, PTB domain adapter protein CED 6 antibody, PTB domain adapter protein CED-6 antibody, PTB domain adaptor protein CED6 antibody, PTB domain-containing engulfment adapter protein 1 antibody

---

UniProt: [Q9UBP9](#)

## Application Details

---

Application Notes: Recommended dilution: WB:1:500-1:5000, IF:1:50-1:200,

Restrictions: For Research Use only

## Handling

---

Format: Liquid

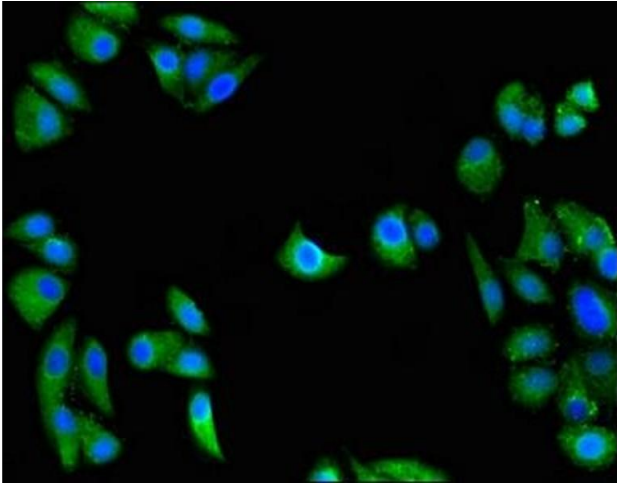
Buffer: Preservative: 0.03 % Proclin 300  
Constituents: 50 % Glycerol, 0.01M PBS, pH 7.4

Preservative: ProClin

Precaution of Use: This product contains ProClin: a POISONOUS AND HAZARDOUS SUBSTANCE which should be handled by trained staff only.

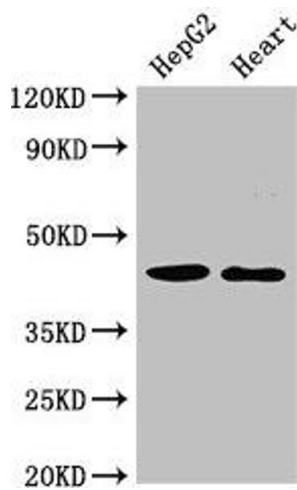
Storage: -20 °C,-80 °C

Storage Comment: Upon receipt, store at -20°C or -80°C. Avoid repeated freeze.



### Immunofluorescence

**Image 1.** Immunofluorescent analysis of HepG2 cells using ABIN7166606 at dilution of 1:100 and Alexa Fluor 488-conjugated AffiniPure Goat Anti-Rabbit IgG(H+L)



### Western Blotting

**Image 2.** Western Blot Positive WB detected in: HepG2 whole cell lysate, Rat heart tissue All lanes: GULP1 antibody at 2 µg/mL Secondary Goat polyclonal to rabbit IgG at 1/50000 dilution Predicted band size: 35, 20, 23, 34 kDa Observed band size: 45 kDa