

Datasheet for ABIN7166626  
**anti-SFTPD antibody (AA 50-64)**[Go to Product page](#)

## 1 Image

## Overview

Quantity:	100 µL
Target:	SFTPD
Binding Specificity:	AA 50-64
Reactivity:	Human
Host:	Rabbit
Clonality:	Polyclonal
Conjugate:	This SFTPD antibody is un-conjugated
Application:	Immunohistochemistry (IHC), ELISA

## Product Details

Immunogen:	Recombinant Human Pulmonary surfactant-associated protein D protein (50-64aa)
Isotype:	IgG
Cross-Reactivity:	Human
Purification:	>95%, Protein G purified

## Target Details

Target:	SFTPD
Alternative Name:	SFTPD ( <a href="#">SFTPD Products</a> )
Background:	Background: Contributes to the lung's defense against inhaled microorganisms, organic antigens and toxins. Interacts with compounds such as bacterial lipopolysaccharides,

## Target Details

oligosaccharides and fatty acids and modulates leukocyte action in immune response. May participate in the extracellular reorganization or turnover of pulmonary surfactant. Binds strongly maltose residues and to a lesser extent other alpha-glucosyl moieties.

Aliases: Pulmonary surfactant-associated protein D (PSP-D) (SP-D) (Collectin-7) (Lung surfactant protein D), SFTPD, COLEC7 PSPD SFTP4

UniProt: [P35247](#)

## Application Details

Application Notes: Recommended dilution: IHC:1:100-1:500,

Restrictions: For Research Use only

## Handling

Format: Liquid

Buffer: Preservative: 0.03 % Proclin 300  
Constituents: 50 % Glycerol, 0.01M PBS, pH 7.4

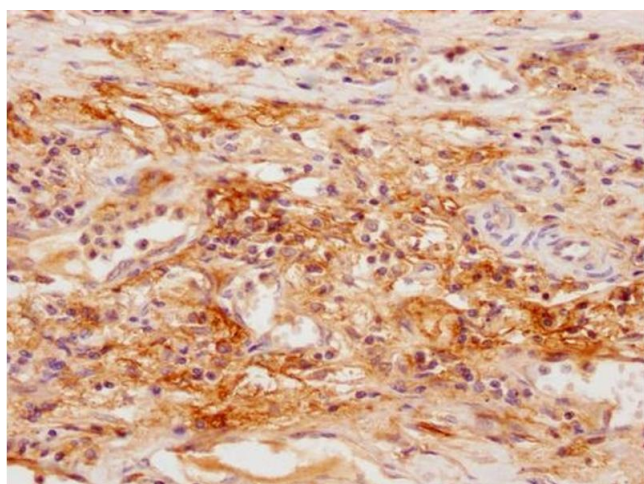
Preservative: ProClin

Precaution of Use: This product contains ProClin: a POISONOUS AND HAZARDOUS SUBSTANCE which should be handled by trained staff only.

Storage: -20 °C,-80 °C

Storage Comment: Upon receipt, store at -20°C or -80°C. Avoid repeated freeze.

## Images



### Immunohistochemistry

**Image 1.** IHC image of ABIN7166626 diluted at 1:100 and staining in paraffin-embedded human lung cancer performed on a Leica Bond™ system. After dewaxing and hydration, antigen retrieval was mediated by high pressure in a citrate buffer (pH 6.0). Section was blocked with 10 % normal goat serum 30 min at RT. Then primary antibody (1 % BSA) was incubated at 4 °C overnight. The primary is detected by a Goat anti-rabbit polymer IgG labeled by HRP

and visualized using 0.05 % DAB.