



Datasheet for ABIN7166636  
**anti-PURG antibody (AA 242-345)**



[Go to Product page](#)

1 Image

Overview

Quantity:	100 µg
Target:	PURG
Binding Specificity:	AA 242-345
Reactivity:	Human
Host:	Rabbit
Clonality:	Polyclonal
Conjugate:	This PURG antibody is un-conjugated
Application:	Western Blotting (WB), ELISA

Product Details

Immunogen:	Recombinant Human Purine-rich element-binding protein gamma protein (242-345AA)
Isotype:	IgG
Cross-Reactivity:	Human
Purification:	>95%, Protein G purified

Target Details

Target:	PURG
Alternative Name:	PURG ( <a href="#">PURG Products</a> )
Background:	PURG antibody, Purine-rich element-binding protein gamma antibody, Purine-rich element-binding protein G antibody

## Target Details

UniProt: [Q9UJV8](#)

## Application Details

Application Notes: Recommended dilution: WB:1:500-1:5000,

Restrictions: For Research Use only

## Handling

Format: Liquid

Buffer: Preservative: 0.03 % Proclin 300  
Constituents: 50 % Glycerol, 0.01M PBS, pH 7.4

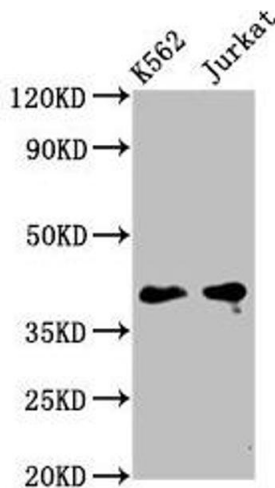
Preservative: ProClin

Precaution of Use: This product contains ProClin: a POISONOUS AND HAZARDOUS SUBSTANCE which should be handled by trained staff only.

Storage: -20 °C,-80 °C

Storage Comment: Upon receipt, store at -20°C or -80°C. Avoid repeated freeze.

## Images



### Western Blotting

**Image 1.** Western Blot Positive WB detected in: K562 whole cell lysate, Jurkat whole cell lysate All lanes: PURG antibody at 5 µg/mL Secondary Goat polyclonal to rabbit IgG at 1/50000 dilution Predicted band size: 40, 37 kDa Observed band size: 40 kDa