



[Go to Product page](#)

Datasheet for ABIN7166656
anti-LPAL2 antibody (AA 52-124)

3 Images

Overview

Quantity:	100 µg
Target:	LPAL2
Binding Specificity:	AA 52-124
Reactivity:	Human
Host:	Rabbit
Clonality:	Polyclonal
Conjugate:	This LPAL2 antibody is un-conjugated
Application:	ELISA, Immunohistochemistry (IHC), Immunofluorescence (IF)

Product Details

Immunogen:	Recombinant Human Putative apolipoprotein(a)-like protein 2 protein (52-124AA)
Isotype:	IgG
Cross-Reactivity:	Human
Purification:	>95%, Protein G purified

Target Details

Target:	LPAL2
Alternative Name:	LPAL2 (LPAL2 Products)
Background:	LPAL2 antibody, APOARGC antibody, Putative apolipoprotein(a)-like protein 2 antibody, Apo(a)-like protein 2 antibody, Lp(a)-liker protein 2 antibody, Apolipoprotein a-related gene C protein

Target Details

antibody, Apo(a)rg-C antibody

UniProt: [Q16609](#)

Application Details

Application Notes: Recommended dilution: IHC:1:20-1:200, IF:1:50-1:200,

Restrictions: For Research Use only

Handling

Format: Liquid

Buffer: Preservative: 0.03 % Proclin 300
Constituents: 50 % Glycerol, 0.01M PBS, PH 7.4

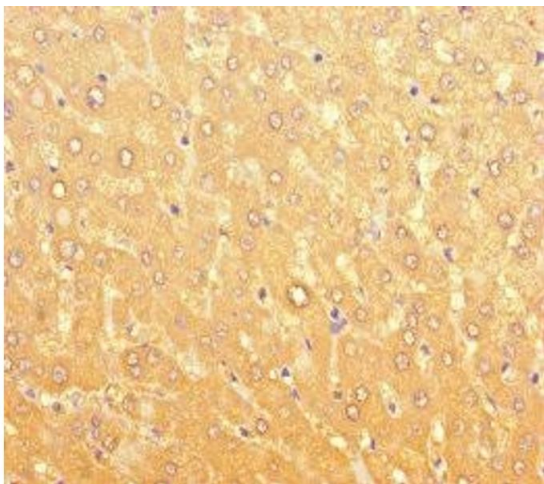
Preservative: ProClin

Precaution of Use: This product contains ProClin: a POISONOUS AND HAZARDOUS SUBSTANCE which should be handled by trained staff only.

Storage: -20 °C,-80 °C

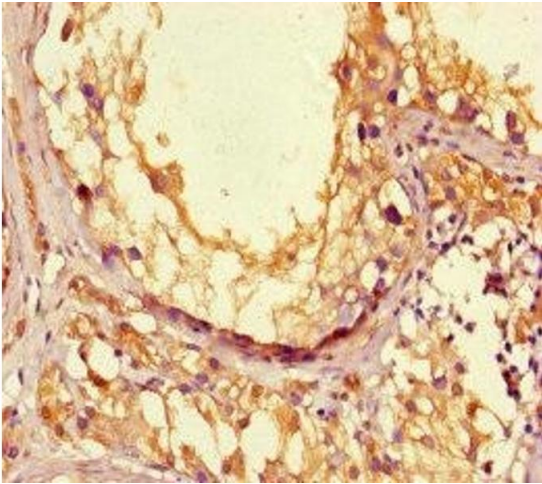
Storage Comment: Upon receipt, store at -20°C or -80°C. Avoid repeated freeze.

Images



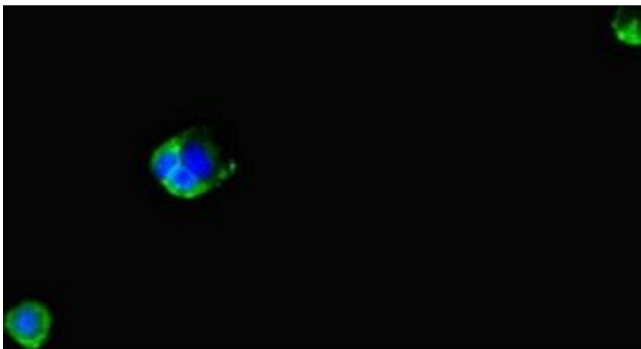
Immunohistochemistry

Image 1. Immunohistochemistry of paraffin-embedded human liver tissue using ABIN7166656 at dilution of 1:100



Immunohistochemistry

Image 2. Immunohistochemistry of paraffin-embedded human testis tissue using ABIN7166656 at dilution of 1:100



Immunofluorescence

Image 3. Immunofluorescent analysis of MCF-7 cells using ABIN7166656 at dilution of 1:100 and Alexa Fluor 488-conjugated AffiniPure Goat Anti-Rabbit IgG(H+L)