



[Go to Product page](#)

Datasheet for ABIN7166691
anti-CCDC26 antibody (AA 1-109)

1 Image

Overview

Quantity:	100 µg
Target:	CCDC26
Binding Specificity:	AA 1-109
Reactivity:	Human
Host:	Rabbit
Clonality:	Polyclonal
Conjugate:	This CCDC26 antibody is un-conjugated
Application:	ELISA, Western Blotting (WB)

Product Details

Immunogen:	Recombinant Human Putative coiled-coil domain-containing protein 26 protein (1-109AA)
Isotype:	IgG
Cross-Reactivity:	Human, Rat
Purification:	>95%, Protein G purified

Target Details

Target:	CCDC26
Alternative Name:	CCDC26 (CCDC26 Products)
Background:	CCDC26 antibody, RAMPutative coiled-coil domain-containing protein 26 antibody, Retinoic acid modulator antibody

Target Details

UniProt: [Q8TAB7](#)

Application Details

Application Notes: Recommended dilution: WB:1:500-1:2000,

Restrictions: For Research Use only

Handling

Format: Liquid

Buffer: Preservative: 0.03 % Proclin 300
Constituents: 50 % Glycerol, 0.01M PBS, pH 7.4

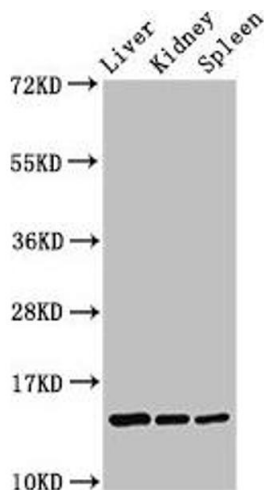
Preservative: ProClin

Precaution of Use: This product contains ProClin: a POISONOUS AND HAZARDOUS SUBSTANCE which should be handled by trained staff only.

Storage: -20 °C,-80 °C

Storage Comment: Upon receipt, store at -20°C or -80°C. Avoid repeated freeze.

Images



Western Blotting

Image 1. Western Blot Positive WB detected in: Rat liver tissue, Rat kidney tissue, Rat spleen tissue All lanes: CCDC26 antibody at 2.6 µg/mL Secondary Goat polyclonal to rabbit IgG at 1/50000 dilution Predicted band size: 14 kDa Observed band size: 14 kDa