



Datasheet for ABIN7166699
anti-PAGE2B antibody (AA 1-111)



[Go to Product page](#)

2 Images

Overview

Quantity:	100 µg
Target:	PAGE2B
Binding Specificity:	AA 1-111
Reactivity:	Human
Host:	Rabbit
Clonality:	Polyclonal
Conjugate:	This PAGE2B antibody is un-conjugated
Application:	ELISA, Immunohistochemistry (IHC)

Product Details

Immunogen:	Recombinant Human Putative G antigen family E member 3 protein (1-111AA)
Isotype:	IgG
Cross-Reactivity:	Human
Purification:	>95%, Protein G purified

Target Details

Target:	PAGE2B
Alternative Name:	PAGE2B (PAGE2B Products)
Background:	CT16.5 antibody, G antigen family E 3 antibody, GAGEE3 antibody, GGEE3_HUMAN antibody, P antigen family member 2B antibody, PAGE 2B antibody, PAGE family member 2B antibody,

Target Details

PAGE-2B antibody, PAGE2B antibody, Prostate associated gene 2B protein antibody, Prostate-associated gene 2B protein antibody, Putative G antigen family E member 3 antibody

UniProt: [Q5JRK9](#)

Application Details

Application Notes: Recommended dilution: IHC:1:20-1:200,

Restrictions: For Research Use only

Handling

Format: Liquid

Buffer: Preservative: 0.03 % Proclin 300
Constituents: 50 % Glycerol, 0.01M PBS, PH 7.4

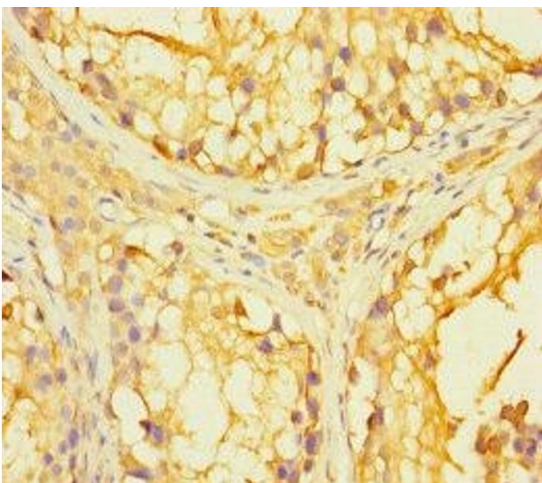
Preservative: ProClin

Precaution of Use: This product contains ProClin: a POISONOUS AND HAZARDOUS SUBSTANCE which should be handled by trained staff only.

Storage: -20 °C,-80 °C

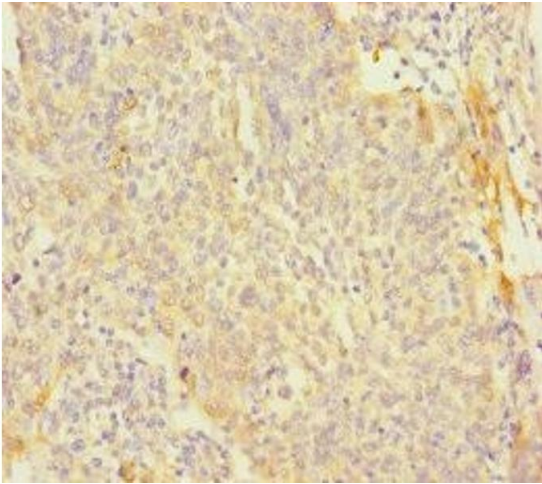
Storage Comment: Upon receipt, store at -20°C or -80°C. Avoid repeated freeze.

Images



Immunohistochemistry

Image 1. Immunohistochemistry of paraffin-embedded human testis tissue using ABIN7166699 at dilution of 1:100



Immunohistochemistry

Image 2. Immunohistochemistry of paraffin-embedded human cervical cancer using ABIN7166699 at dilution of 1:100