



[Go to Product page](#)

Datasheet for ABIN7166771  
**anti-RBFA antibody (AA 201-343)**

3 Images

### Overview

|                      |  |
|----------------------|--|
| Quantity:            | 100 µg   |
| Target:              | RBFA   |
| Binding Specificity: | AA 201-343   |
| Reactivity:          | Human  |
| Host:                | Rabbit   |
| Clonality:           | Polyclonal   |
| Conjugate:           | This RBFA antibody is un-conjugated                      |
| Application:         | Western Blotting (WB), ELISA, Immunohistochemistry (IHC) |

### Product Details

|                   |   |
|-------------------|---|
| Immunogen:        | Recombinant Human Putative ribosome-binding factor A, mitochondrial protein (201-343AA) |
| Isotype:          | IgG   |
| Cross-Reactivity: | Human, Mouse, Rat   |
| Purification:     | >95%, Protein G purified  |

### Target Details

|                   |  |
|-------------------|--|
| Target:           | RBFA   |
| Alternative Name: | RBFA ( <a href="#">RBFA Products</a> )   |
| Background:       | Chromosome 18 open reading frame 22 antibody, HsT169 antibody, Hypothetical protein LOC79863 antibody, mitochondrial antibody, Putative ribosome binding factor A, mitochondrial |

## Target Details

precursor antibody, Putative ribosome-binding factor A antibody, rbfA antibody, RBFA\_HUMAN antibody

UniProt: [Q8N0V3](#)

## Application Details

Application Notes: Recommended dilution: WB:1:500-1:5000, IHC:1:20-1:200,

Restrictions: For Research Use only

## Handling

Format: Liquid

Buffer: Preservative: 0.03 % Proclin 300  
Constituents: 50 % Glycerol, 0.01M PBS, pH 7.4

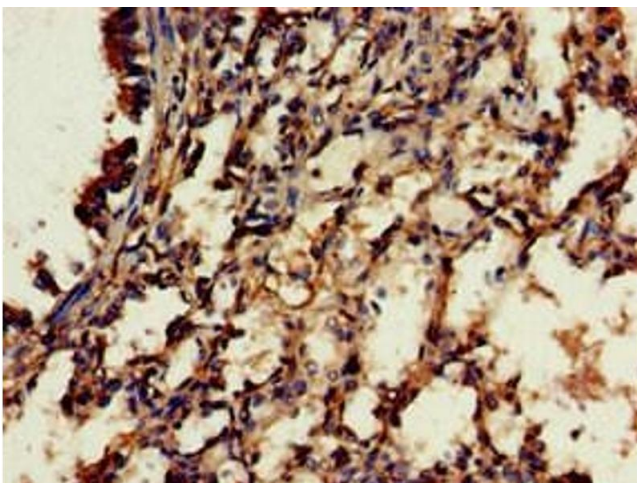
Preservative: ProClin

Precaution of Use: This product contains ProClin: a POISONOUS AND HAZARDOUS SUBSTANCE which should be handled by trained staff only.

Storage: -20 °C,-80 °C

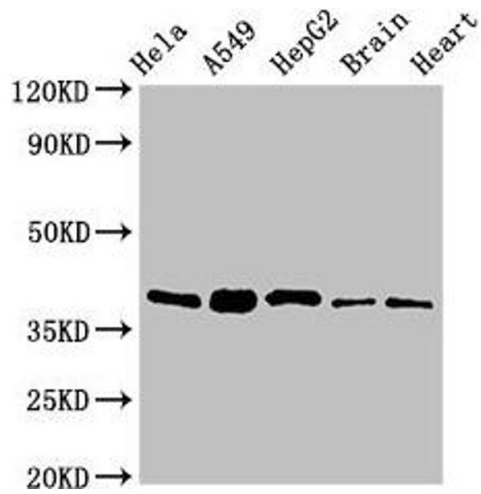
Storage Comment: Upon receipt, store at -20°C or -80°C. Avoid repeated freeze.

## Images



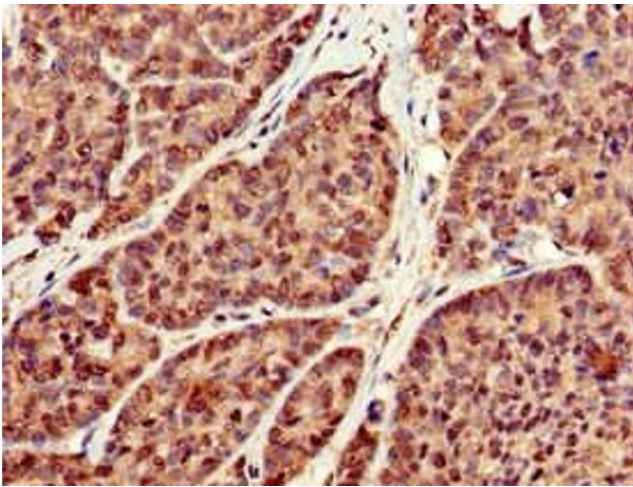
### Immunohistochemistry

**Image 1.** Immunohistochemistry of paraffin-embedded human lung tissue using ABIN7166771 at dilution of 1:100



### Western Blotting

**Image 2.** Western Blot Positive WB detected in: HeLa whole cell lysate, A549 whole cell lysate, HepG2 whole cell lysate, Mouse brain tissue, Rat heart tissue All lanes: RBFA antibody at 2 µg/mL Secondary Goat polyclonal to rabbit IgG at 1/50000 dilution Predicted band size: 39, 28 kDa Observed band size: 39 kDa



### Immunohistochemistry

**Image 3.** Immunohistochemistry of paraffin-embedded human ovarian cancer using ABIN7166771 at dilution of 1:100