



[Go to Product page](#)

Datasheet for ABIN716681
anti-LDHD antibody (AA 351-450)

1 Image

Overview

Quantity:	100 µL
Target:	LDHD
Binding Specificity:	AA 351-450
Reactivity:	Human
Host:	Rabbit
Clonality:	Polyclonal
Conjugate:	This LDHD antibody is un-conjugated
Application:	ELISA, Immunofluorescence (Cultured Cells) (IF (cc)), Immunofluorescence (Paraffin-embedded Sections) (IF (p)), Immunohistochemistry (Paraffin-embedded Sections) (IHC (p)), Immunohistochemistry (Frozen Sections) (IHC (fro))

Product Details

Immunogen:	KLH conjugated synthetic peptide derived from human LDHD
Isotype:	IgG
Predicted Reactivity:	Human,Mouse,Rat,Dog,Cow,Horse,Chicken,Rabbit
Purification:	Purified by Protein A.

Target Details

Target:	LDHD
Alternative Name:	Ldhd (LDHD Products)

Target Details

Background: Synonyms: DLD, Probable D-lactate dehydrogenase, mitochondrial, Lactate dehydrogenase D, LDHD

Background: The protein encoded by this gene belongs to the D-isomer specific 2-hydroxyacid dehydrogenase family. The similar protein in yeast has both D-lactate and D-glycerate dehydrogenase activities. Alternative splicing occurs at this locus and two transcript variants encoding distinct isoforms have been identified. [provided by RefSeq, Jul 2008]

Gene ID: 197257

UniProt: [Q86WU2](#)

Pathways: [Ribonucleoside Biosynthetic Process](#)

Application Details

Application Notes: ELISA 1:500-1000
IHC-P 1:200-400
IHC-F 1:100-500
IF(IHC-P) 1:50-200
IF(IHC-F) 1:50-200
IF(ICC) 1:50-200

Restrictions: For Research Use only

Handling

Format: Liquid

Concentration: 1 µg/µL

Buffer: 0.01M TBS(pH 7.4) with 1 % BSA, 0.02 % Proclin300 and 50 % Glycerol.

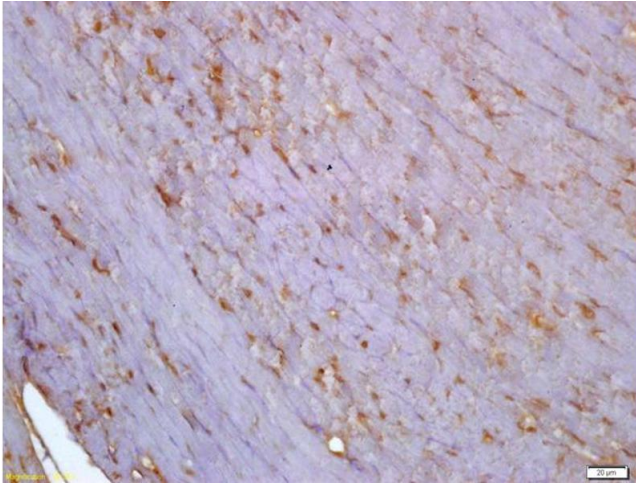
Preservative: ProClin

Precaution of Use: This product contains ProClin: a POISONOUS AND HAZARDOUS SUBSTANCE, which should be handled by trained staff only.

Storage: 4 °C,-20 °C

Storage Comment: Shipped at 4°C. Store at -20°C for one year. Avoid repeated freeze/thaw cycles.

Expiry Date: 12 months



Immunohistochemistry

Image 1. Formalin-fixed and paraffin embedded mouse heart labeled with Anti-LDHD Polyclonal Antibody, Unconjugated (ABIN716681) at 1:200 followed by conjugation to the secondary antibody and DAB staining