

Datasheet for ABIN7166900  
**anti-PDHA2 antibody (AA 119-388)**



[Go to Product page](#)

2 Images

## Overview

Quantity:	100 µL
Target:	PDHA2 (PDHa2)
Binding Specificity:	AA 119-388
Reactivity:	Human
Host:	Rabbit
Clonality:	Polyclonal
Conjugate:	This PDHA2 antibody is un-conjugated
Application:	Western Blotting (WB), Immunohistochemistry (IHC), ELISA

## Product Details

Immunogen:	Recombinant Human Pyruvate dehydrogenase E1 component subunit alpha, testis-specific form, mitochondrial protein (119-388AA)
Isotype:	IgG
Cross-Reactivity:	Human, Mouse
Purification:	Antigen Affinity Purified

## Target Details

Target:	PDHA2 (PDHa2)
Alternative Name:	PDHA2 ( <a href="#">PDHa2 Products</a> )
Background:	Background: The pyruvate dehydrogenase complex catalyzes the overall conversion of

## Target Details

pyruvate to acetyl-CoA and CO(2), and thereby links the glycolytic pathway to the tricarboxylic cycle.

Aliases: PDHA2 antibody, PDHAL antibody, Pyruvate dehydrogenase E1 component subunit alpha antibody, testis-specific form antibody, mitochondrial antibody, EC 1.2.4.1 antibody, PDHE1-A type II antibody

UniProt: [P29803](#)

Pathways: [Warburg Effect](#)

## Application Details

Application Notes: Recommended dilution: WB:1:1000-1:5000, IHC:1:20-1:200,

Restrictions: For Research Use only

## Handling

Format: Liquid

Buffer: PBS with 0.02 % sodium azide, 50 % glycerol, pH 7.3.

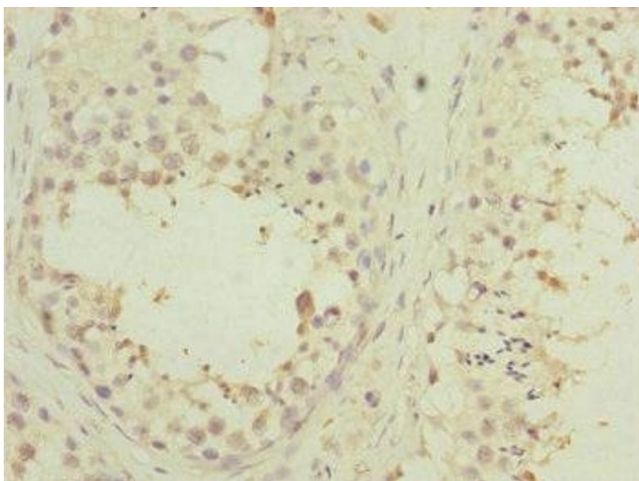
Preservative: Sodium azide

Precaution of Use: This product contains Sodium azide: a POISONOUS AND HAZARDOUS SUBSTANCE which should be handled by trained staff only.

Storage: -20 °C,-80 °C

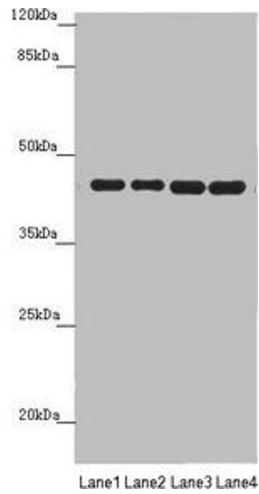
Storage Comment: Upon receipt, store at -20°C or -80°C. Avoid repeated freeze.

## Images



### Immunohistochemistry

**Image 1.** Immunohistochemistry of paraffin-embedded human testis tissue using ABIN7166900 at dilution of 1:100



### Western Blotting

**Image 2.** Western blot All lanes: PDHA2 antibody at 1.62  $\mu$ g/mL Lane 1: Mouse gonadal tissue Lane 2: 293T whole cell lysate Lane 3: A549 whole cell lysate Lane 4: HepG2 whole cell lysate Secondary Goat polyclonal to rabbit IgG at 1/10000 dilution Predicted band size: 43 kDa Observed band size: 43 kDa