



[Go to Product page](#)

Datasheet for ABIN7166912
anti-PKM antibody (AA 2-192)

2 Images

Overview

Quantity:	100 µg
Target:	PKM
Binding Specificity:	AA 2-192
Reactivity:	Human
Host:	Rabbit
Clonality:	Polyclonal
Conjugate:	This PKM antibody is un-conjugated
Application:	ELISA, Immunohistochemistry (IHC), Immunofluorescence (IF)

Product Details

Immunogen:	Recombinant Human Pyruvate kinase PKM protein (2-192AA)
Isotype:	IgG
Cross-Reactivity:	Human
Purification:	>95%, Protein G purified

Target Details

Target:	PKM
Alternative Name:	PKM (PKM Products)
Background:	Background: Glycolytic enzyme that catalyzes the transfer of a phosphoryl group from phosphoenolpyruvate (PEP) to ADP, generating ATP. Stimulates POU5F1-mediated

Target Details

transcriptional activation. Plays a general role in caspase independent cell death of tumor cells. The ratio between the highly active tetrameric form and nearly inactive dimeric form determines whether glucose carbons are channeled to biosynthetic processes or used for glycolytic ATP production. The transition between the 2 forms contributes to the control of glycolysis and is important for tumor cell proliferation and survival.

Aliases: CTHBP antibody, Cytosolic thyroid hormone-binding protein antibody, KPYM_HUMAN antibody, OIP-3 antibody, Opa-interacting protein 3 antibody, p58 antibody, pkm antibody, PKM1 antibody, PKM2 antibody, Pyruvate kinase 2/3 antibody, Pyruvate kinase muscle isozyme antibody, Pyruvate kinase PKM antibody, THBP1 antibody, Thyroid hormone-binding protein 1 antibody, Tumor M2-PK antibody

UniProt: [P14618](#)

Pathways: [Warburg Effect](#)

Application Details

Application Notes: Recommended dilution: IHC:1:20-1:200, IF:1:50-1:200,

Restrictions: For Research Use only

Handling

Format: Liquid

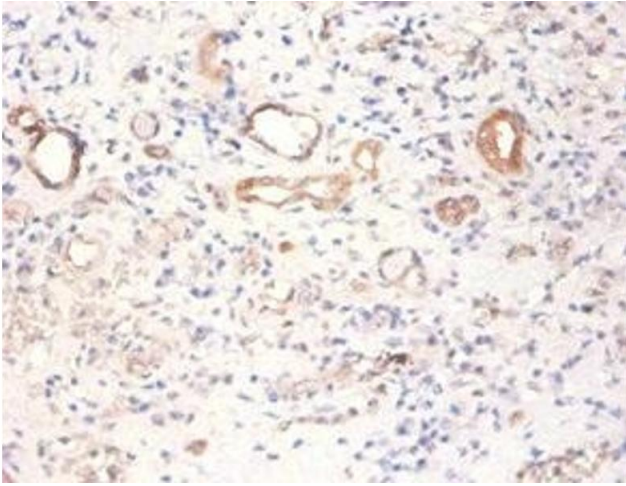
Buffer: Preservative: 0.03 % Proclin 300
Constituents: 50 % Glycerol, 0.01M PBS, PH 7.4

Preservative: ProClin

Precaution of Use: This product contains ProClin: a POISONOUS AND HAZARDOUS SUBSTANCE which should be handled by trained staff only.

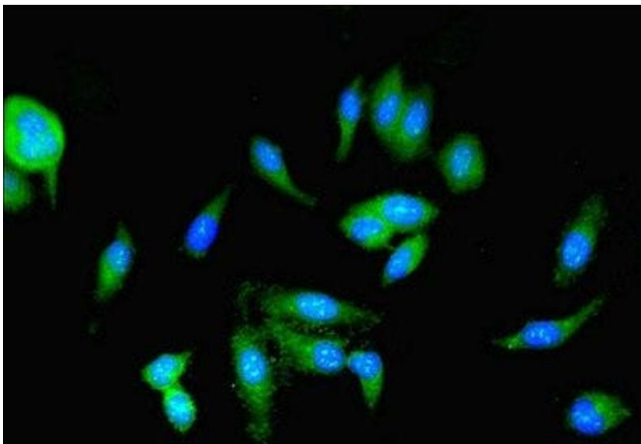
Storage: -20 °C,-80 °C

Storage Comment: Upon receipt, store at -20°C or -80°C. Avoid repeated freeze.



Immunohistochemistry

Image 1. Immunohistochemistry of paraffin-embedded human kidney tissue using ABIN7166912 at dilution of 1:100



Immunofluorescence

Image 2. Immunofluorescent analysis of HeLa cells using ABIN7166912 at dilution of 1:100 and Alexa Fluor 488-conjugated AffiniPure Goat Anti-Rabbit IgG(H+L)