

Datasheet for ABIN7166916
anti-PKM antibody (AA 2-531)[Go to Product page](#)

9 Images

Overview

Quantity:	100 µL
Target:	PKM
Binding Specificity:	AA 2-531
Reactivity:	Human
Host:	Mouse
Clonality:	Monoclonal
Conjugate:	This PKM antibody is un-conjugated
Application:	ELISA, Western Blotting (WB), Immunohistochemistry (IHC), Immunofluorescence (IF), Immunoprecipitation (IP), Flow Cytometry (FACS)

Product Details

Immunogen:	Recombinant Human Pyruvate kinase PKM protein (2-531AA)
Clone:	6C3C7
Isotype:	IgG1, IgG1 kappa
Cross-Reactivity:	Human, Mouse, Rabbit, Rat
Purification:	Protein G purified

Target Details

Target:	PKM
Alternative Name:	PKM (PKM Products)

Target Details

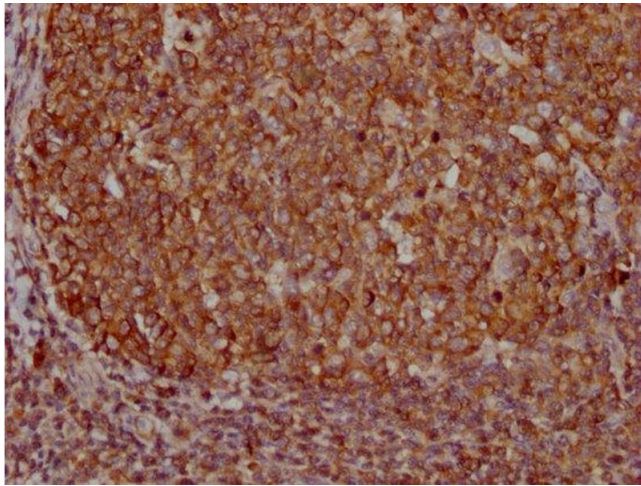
Background:	<p>Background: Glycolytic enzyme that catalyzes the transfer of a phosphoryl group from phosphoenolpyruvate (PEP) to ADP, generating ATP. Stimulates POU5F1-mediated transcriptional activation. Plays a general role in caspase independent cell death of tumor cells. The ratio between the highly active tetrameric form and nearly inactive dimeric form determines whether glucose carbons are channeled to biosynthetic processes or used for glycolytic ATP production. The transition between the 2 forms contributes to the control of glycolysis and is important for tumor cell proliferation and survival.</p> <p>Aliases: CTHBP antibody, Cytosolic thyroid hormone-binding protein antibody, KPYM_HUMAN antibody, OIP-3 antibody, Opa-interacting protein 3 antibody, p58 antibody, pkm antibody, PKM1 antibody, PKM2 antibody, Pyruvate kinase 2/3 antibody, Pyruvate kinase muscle isozyme antibody, Pyruvate kinase PKM antibody, THBP1 antibody, Thyroid hormone-binding protein 1 antibody, Tumor M2-PK antibody</p>
UniProt:	P14618
Pathways:	Warburg Effect

Application Details

Application Notes:	Recommended dilution: WB: 1:4000-1:256000, IHC: 1:200-1:500, IF: 1:150-1:300, FC: 1:50-1:200, IP: 1 µL-4 µL,
Restrictions:	For Research Use only

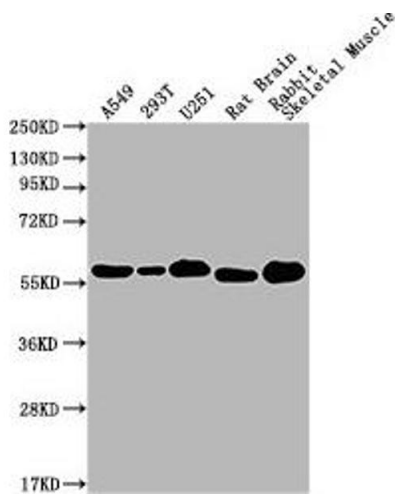
Handling

Format:	Liquid
Buffer:	Preservative: 0.03 % Proclin 300 Constituents: 50 % Glycerol, 0.01M PBS, PH 7.4
Preservative:	ProClin
Precaution of Use:	This product contains ProClin: a POISONOUS AND HAZARDOUS SUBSTANCE which should be handled by trained staff only.
Storage:	-20 °C,-80 °C
Storage Comment:	Upon receipt, store at -20°C or -80°C. Avoid repeated freeze.



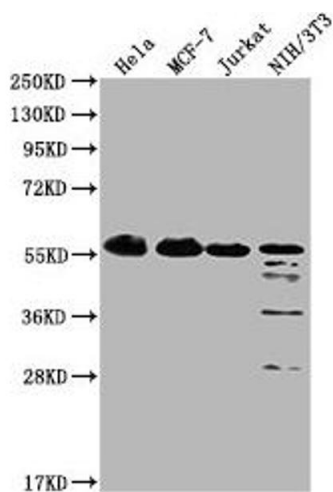
Immunohistochemistry

Image 1. IHC image of ABIN7166916 diluted at 1:400 and staining in paraffin-embedded human tonsil tissue performed on a Leica Bond™ system. After dewaxing and hydration, antigen retrieval was mediated by high pressure in a citrate buffer (pH 6.0). Section was blocked with 10 % normal goat serum 30 min at RT. Then primary antibody (1 % BSA) was incubated at 4 °C overnight. The primary is detected by a biotinylated secondary antibody and visualized using an HRP conjugated SP system.



Western Blotting

Image 2. Western Blot Positive WB detected in: A549 whole cell lysate, 293T whole cell lysate, U251 whole cell lysate, Rat Brain tissue, Rabbit Skeletal Muscle tissue All lanes: PKM antibody at 1:1000 Secondary Goat polyclonal to Mouse IgG at 1/10000 dilution Predicted band size: 58 kDa Observed band size: 58 KDa Exposure time: 1 min



Western Blotting

Image 3. Western Blot Positive WB detected in: HeLa whole cell lysate, MCF-7 whole cell lysate, Jurkat whole cell lysate, NIH/3T3 whole cell lysate All lanes: PKM antibody at 1:1000 Secondary Goat polyclonal to Mouse IgG at 1/10000 dilution Predicted band size: 58 kDa Observed band size: 58 KDa Exposure time: 1 min

Please check the [product details page](#) for more images. Overall 9 images are available for ABIN7166916.