



[Go to Product page](#)

Datasheet for ABIN7166931
anti-CRYZL1 antibody (AA 1-87)

1 Image

Overview

Quantity:	100 µg
Target:	CRYZL1
Binding Specificity:	AA 1-87
Reactivity:	Human
Host:	Rabbit
Clonality:	Polyclonal
Conjugate:	This CRYZL1 antibody is un-conjugated
Application:	Western Blotting (WB), ELISA

Product Details

Immunogen:	Recombinant Human Quinone oxidoreductase-like protein 1 protein (1-87AA)
Isotype:	IgG
Cross-Reactivity:	Human
Purification:	>95%, Protein G purified

Target Details

Target:	CRYZL1
Alternative Name:	CRYZL1 (CRYZL1 Products)
Background:	Background: cytosol, NADP binding, NADPH:quinone reductase activity, quinone metabolic process

Target Details

Aliases: 4P11 antibody, Crystallin zeta (quinone reductase) like 1 antibody, CRYZL1 antibody, Protein 4P11 antibody, QOH 1 antibody, QOH-1 antibody, QOH1 antibody, QORL1_HUMAN antibody, Quinone oxidoreductase homolog 1 antibody, Quinone oxidoreductase like 1 antibody, Quinone oxidoreductase-like protein 1 antibody, Quinone reductase like 1 antibody, Zeta crystallin homolog antibody, Zeta-crystallin homolog antibody

UniProt: [O95825](#)

Application Details

Application Notes: Recommended dilution: WB:1:500-1:2000,

Restrictions: For Research Use only

Handling

Format: Liquid

Buffer: Preservative: 0.03 % Proclin 300
Constituents: 50 % Glycerol, 0.01M PBS, PH 7.4

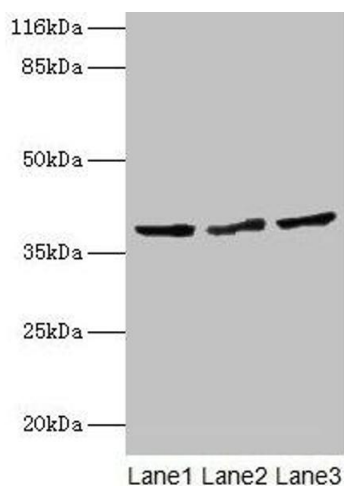
Preservative: ProClin

Precaution of Use: This product contains ProClin: a POISONOUS AND HAZARDOUS SUBSTANCE which should be handled by trained staff only.

Storage: -20 °C,-80 °C

Storage Comment: Upon receipt, store at -20°C or -80°C. Avoid repeated freeze.

Images



Western Blotting

Image 1. Western blot All lanes: CRYZL1 antibody at 12 μ g/mL Lane 1: Hela whole cell lysate Lane 2: HepG2 whole cell lysate Lane 3: Jurkat whole cell lysate Secondary Goat polyclonal to rabbit IgG at 1/10000 dilution Predicted band size: 39, 22 kDa Observed band size: 39 kDa