

Datasheet for ABIN7166957  
**anti-GDI2 antibody (AA 1-445)**



[Go to Product page](#)

3 Images

## Overview

Quantity:	100 µg
Target:	GDI2
Binding Specificity:	AA 1-445
Reactivity:	Human
Host:	Rabbit
Clonality:	Polyclonal
Conjugate:	This GDI2 antibody is un-conjugated
Application:	ELISA, Western Blotting (WB), Immunohistochemistry (IHC)

## Product Details

Immunogen:	Recombinant Human Rab GDP dissociation inhibitor beta protein (1-445AA)
Isotype:	IgG
Cross-Reactivity:	Human, Mouse
Purification:	>95%, Protein G purified

## Target Details

Target:	GDI2
Alternative Name:	GDI2 ( <a href="#">GDI2 Products</a> )
Background:	Background: Regulates the GDP/GTP exchange reaction of most Rab proteins by inhibiting the dissociation of GDP from them, and the subsequent binding of GTP to them.

## Target Details

Aliases: GDI-2 antibody, GDI2 antibody, GDIB\_HUMAN antibody, GDP dissociation inhibitor 2 antibody, Guanosine diphosphate dissociation inhibitor 2 antibody, Rab GDI beta antibody, Rab GDP dissociation inhibitor beta antibody, RABGDIB antibody

UniProt: [P50395](#)

## Application Details

Application Notes: Recommended dilution: WB:1:500-1:5000, IHC:1:20-1:200,

Restrictions: For Research Use only

## Handling

Format: Liquid

Buffer: Preservative: 0.03 % Proclin 300  
Constituents: 50 % Glycerol, 0.01M PBS, PH 7.4

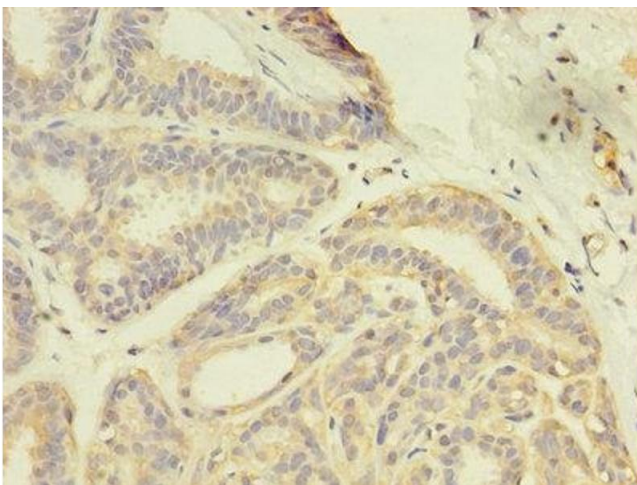
Preservative: ProClin

Precaution of Use: This product contains ProClin: a POISONOUS AND HAZARDOUS SUBSTANCE which should be handled by trained staff only.

Storage: -20 °C,-80 °C

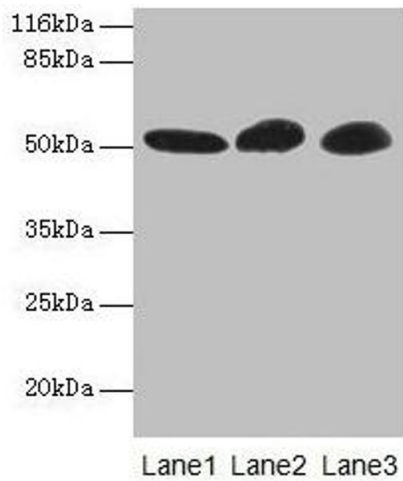
Storage Comment: Upon receipt, store at -20°C or -80°C. Avoid repeated freeze.

## Images



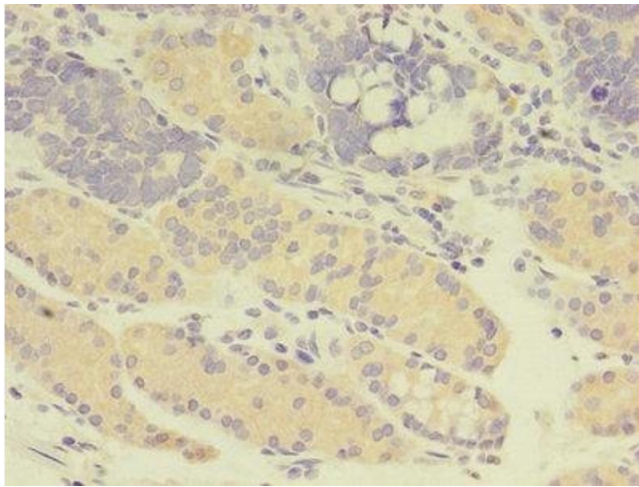
### Immunohistochemistry

**Image 1.** Immunohistochemistry of paraffin-embedded human breast cancer using ABIN7166957 at dilution of 1:100



### Western Blotting

**Image 2.** Western blot All lanes: GDI2 antibody at 2 µg/mL  
Lane 1: Mouse brain tissue Lane 2: HepG2 whole cell lysate  
Lane 3: MCF-7 whole cell lysate Secondary Goat polyclonal  
to rabbit IgG at 1/10000 dilution Predicted band size: 51, 46  
kDa Observed band size: 51 kDa



### Immunohistochemistry

**Image 3.** Immunohistochemistry of paraffin-embedded  
human gastric cancer using ABIN7166957 at dilution of  
1:100