

Datasheet for ABIN7166961  
**anti-RABGAP1L antibody (Isoform 10)**



[Go to Product page](#)

**3** Images

## Overview

Quantity:	100 µg
Target:	RABGAP1L
Binding Specificity:	AA 11-262, Isoform 10
Reactivity:	Human
Host:	Rabbit
Clonality:	Polyclonal
Conjugate:	This RABGAP1L antibody is un-conjugated
Application:	ELISA, Western Blotting (WB), Immunohistochemistry (IHC)

## Product Details

Immunogen:	Recombinant Human Rab GTPase-activating protein 1-like, isoform 10 protein (11-262AA)
Isotype:	IgG
Cross-Reactivity:	Human, Mouse
Purification:	>95%, Protein G purified

## Target Details

Target:	RABGAP1L
Alternative Name:	RABGAP1L ( <a href="#">RABGAP1L Products</a> )
Background:	RABGAP1L antibody, HHL antibody, KIAA0471 antibody, Rab GTPase-activating protein 1-like antibody, isoform 10 antibody

## Target Details

---

UniProt: [B7ZAP0](#)

## Application Details

---

Application Notes: Recommended dilution: WB:1:2000-1:10000, IHC:1:20-1:200,

Restrictions: For Research Use only

## Handling

---

Format: Liquid

Buffer: Preservative: 0.03 % Proclin 300  
Constituents: 50 % Glycerol, 0.01M PBS, PH 7.4

Preservative: ProClin

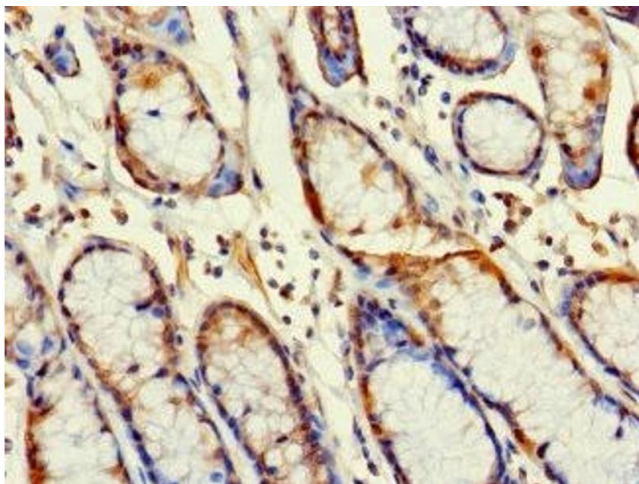
Precaution of Use: This product contains ProClin: a POISONOUS AND HAZARDOUS SUBSTANCE which should be handled by trained staff only.

Storage: -20 °C,-80 °C

Storage Comment: Upon receipt, store at -20°C or -80°C. Avoid repeated freeze.

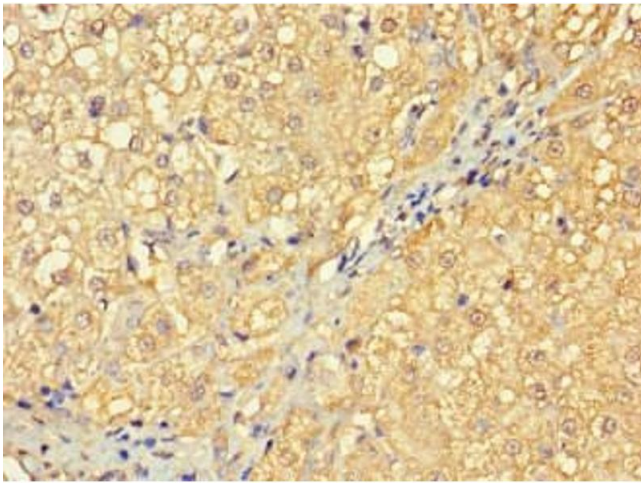
## Images

---



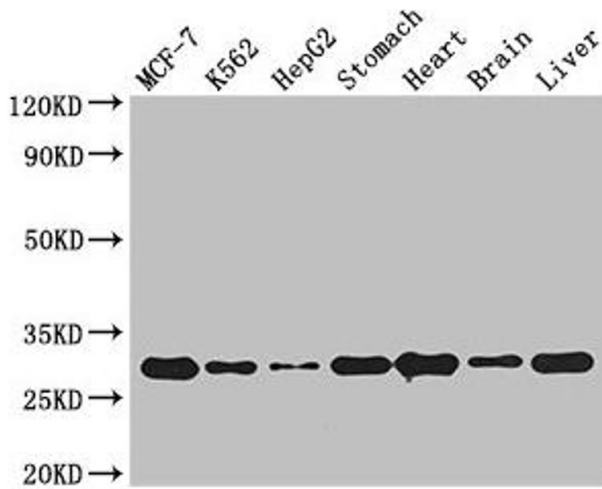
### Immunohistochemistry

**Image 1.** Immunohistochemistry of paraffin-embedded human gastric cancer using ABIN7166961 at dilution of 1:100



### Immunohistochemistry

**Image 2.** Immunohistochemistry of paraffin-embedded human liver cancer using ABIN7166961 at dilution of 1:100



### Western Blotting

**Image 3.** Western Blot Positive WB detected in: MCF-7 whole cell lysate, K562 whole cell lysate, HepG2 whole cell lysate, Mouse stomach tissue, Mouse heart tissue, Mouse brain tissue, Mouse liver tissue All lanes: RABGAP1L antibody at 3 µg/mL Secondary Goat polyclonal to rabbit IgG at 1/50000 dilution Predicted band size: 30, 93, 69, 95, 91, 44, 42, 43, 9 kDa Observed band size: 30 kDa