

Datasheet for ABIN7166965
anti-RABEP1 antibody (AA 1-255)



[Go to Product page](#)

2 Images

Overview

Quantity:	100 µL
Target:	RABEP1
Binding Specificity:	AA 1-255
Reactivity:	Human
Host:	Rabbit
Clonality:	Polyclonal
Conjugate:	This RABEP1 antibody is un-conjugated
Application:	ELISA, Western Blotting (WB), Immunohistochemistry (IHC)

Product Details

Immunogen:	Recombinant Human Rab GTPase-binding effector protein 1 protein (1-255AA)
Isotype:	IgG
Cross-Reactivity:	Human
Purification:	>95%, Protein G purified

Target Details

Target:	RABEP1
Alternative Name:	RABEP1 (RABEP1 Products)
Background:	Background: Rab effector protein acting as linker between gamma-adaptin, RAB4A and RAB5A. Involved in endocytic membrane fusion and membrane trafficking of recycling endosomes.

Target Details

Involved in KCNH1 channels trafficking to and from the cell membrane (PubMed:22841712).

Stimulates RABGEF1 mediated nucleotide exchange on RAB5A.

Aliases: RABEP1 antibody, RAB5EP antibody, RABPT5 antibody, RABPT5A antibody, Rab GTPase-binding effector protein 1 antibody, Rabaptin-4 antibody, Rabaptin-5 antibody, Rabaptin-5alpha antibody, Renal carcinoma antigen NY-REN-17 antibody

UniProt: [Q15276](#)

Application Details

Application Notes: Recommended dilution: WB:1:1000-1:5000, IHC:1:200-1:500,

Restrictions: For Research Use only

Handling

Format: Liquid

Buffer: Preservative: 0.03 % Proclin 300
Constituents: 50 % Glycerol, 0.01M PBS, pH 7.4

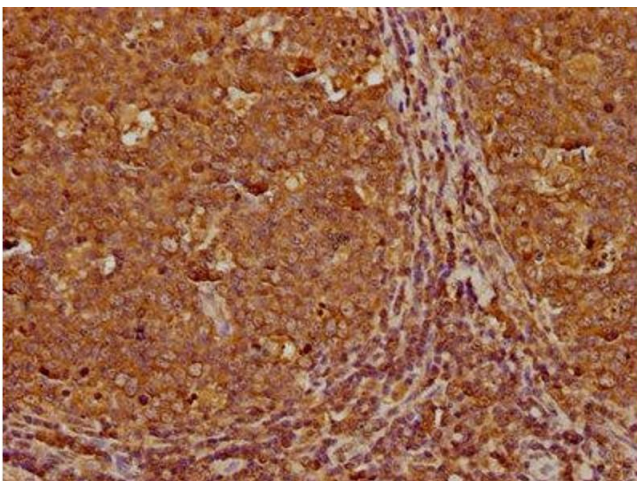
Preservative: ProClin

Precaution of Use: This product contains ProClin: a POISONOUS AND HAZARDOUS SUBSTANCE which should be handled by trained staff only.

Storage: -20 °C,-80 °C

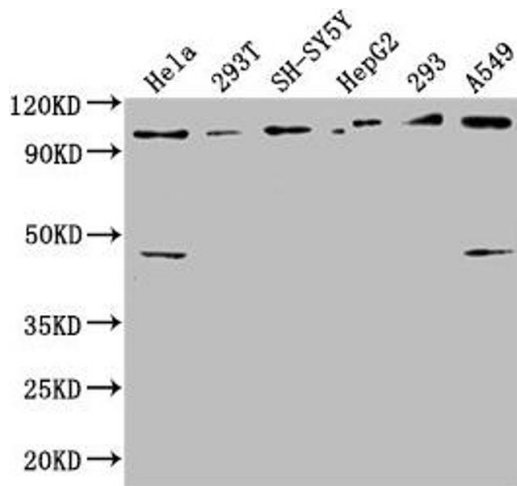
Storage Comment: Upon receipt, store at -20°C or -80°C. Avoid repeated freeze.

Images



Immunohistochemistry

Image 1. IHC image of ABIN7166965 diluted at 1:300 and staining in paraffin-embedded human tonsil tissue performed on a Leica Bond™ system. After dewaxing and hydration, antigen retrieval was mediated by high pressure in a citrate buffer (pH 6.0). Section was blocked with 10% normal goat serum 30min at RT. Then primary antibody (1% BSA) was incubated at 4°C overnight. The primary is detected by a biotinylated secondary antibody and



visualized using an HRP conjugated SP system.

Western Blotting

Image 2. Western Blot Positive WB detected in: HeLa whole cell lysate, 293T whole cell lysate, SH-SY5Y whole cell lysate, HepG2 whole cell lysate, 293 whole cell lysate, A549 whole cell lysate All lanes: RABEP1 antibody at 1:2500 Secondary Goat polyclonal to rabbit IgG at 1/50000 dilution Predicted band size: 100, 96 kDa Observed band size: 100 kDa