



[Go to Product page](#)

Datasheet for ABIN7166969

## anti-RABEP2 antibody (AA 301-533)

### 2 Images

#### Overview

Quantity:	100 µg
Target:	RABEP2
Binding Specificity:	AA 301-533
Reactivity:	Human
Host:	Rabbit
Clonality:	Polyclonal
Conjugate:	This RABEP2 antibody is un-conjugated
Application:	ELISA, Immunohistochemistry (IHC)

#### Product Details

Immunogen:	Recombinant Human Rab GTPase-binding effector protein 2 protein (301-533AA)
Isotype:	IgG
Cross-Reactivity:	Human
Purification:	>95%, Protein G purified

#### Target Details

Target:	RABEP2
Alternative Name:	RABEP2 ( <a href="#">RABEP2 Products</a> )
Background:	Background: Plays a role in membrane trafficking and in homotypic early endosome fusion. Aliases: FLJ23282 antibody, FRA antibody, Rab GTPase binding effector protein 2 antibody, Rab

## Target Details

GTPase-binding effector protein 2 antibody, Rabaptin 5 beta antibody, Rabaptin RAB GTPase binding effector protein 2 antibody, Rabaptin-5beta antibody, RABE2\_HUMAN antibody, RABEP 2 antibody, RABEP2 antibody, RABPT5B antibody

UniProt: [Q9H5N1](#)

## Application Details

Application Notes: Recommended dilution: IHC:1:20-1:200,

Restrictions: For Research Use only

## Handling

Format: Liquid

Buffer: Preservative: 0.03 % Proclin 300  
Constituents: 50 % Glycerol, 0.01M PBS, PH 7.4

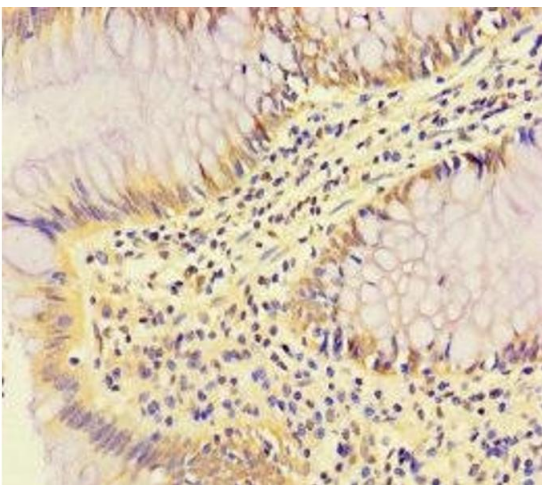
Preservative: ProClin

Precaution of Use: This product contains ProClin: a POISONOUS AND HAZARDOUS SUBSTANCE which should be handled by trained staff only.

Storage: -20 °C,-80 °C

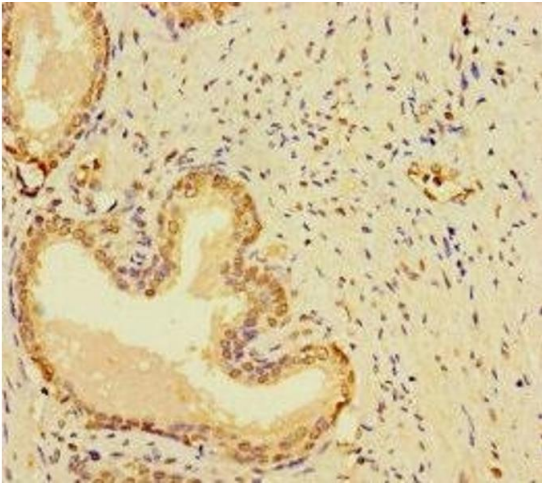
Storage Comment: Upon receipt, store at -20°C or -80°C. Avoid repeated freeze.

## Images



### Immunohistochemistry

**Image 1.** Immunohistochemistry of paraffin-embedded human colon cancer using ABIN7166969 at dilution of 1:100



### Immunohistochemistry

**Image 2.** Immunohistochemistry of paraffin-embedded human prostate cancer using ABIN7166969 at dilution of 1:100