

Datasheet for ABIN7166973
anti-CHM antibody (AA 1-653)[Go to Product page](#)

2 Images

Overview

Quantity:	100 µg
Target:	CHM
Binding Specificity:	AA 1-653
Reactivity:	Human
Host:	Rabbit
Clonality:	Polyclonal
Conjugate:	This CHM antibody is un-conjugated
Application:	ELISA, Immunohistochemistry (IHC), Immunofluorescence (IF)

Product Details

Immunogen:	Recombinant Human Rab proteins geranylgeranyltransferase component A 1 protein (1-653AA)
Isotype:	IgG
Cross-Reactivity:	Human
Purification:	>95%, Protein G purified

Target Details

Target:	CHM
Alternative Name:	CHM (CHM Products)
Background:	Background: Substrate-binding subunit of the Rab geranylgeranyltransferase (GGTase) complex. Binds unprenylated Rab proteins and presents the substrate peptide to the catalytic

Target Details

component B composed of RABGGTA and RABGGTB, and remains bound to it after the geranylgeranyl transfer reaction. The component A is thought to be regenerated by transferring its prenylated Rab back to the donor membrane. Besides, a pre-formed complex consisting of CHM and the Rab GGTase dimer (RGGT or component B) can bind to and prenylate Rab proteins, this alternative pathway is proposed to be the predominant pathway for Rab protein geranylgeranylation.

Aliases: dy, Chm antibody, Choroideraemia protein antibody, Choroideremia antibody, DXS540 antibody, FLJ38564 antibody, GGTA antibody, HSD 32 antibody, MGC102710 antibody, Rab escort protein 1 antibody, Rab geranylgeranyltransferase component A antibody, Rab proteins geranylgeranyltransferase component A 1 antibody, RAE1_HUMAN antibody, REP 1 antibody, REP-1 antibody, REP1 antibody, TCD antibody, TCD protein antibody

UniProt: [P24386](#)

Pathways: [Sensory Perception of Sound](#)

Application Details

Application Notes: Recommended dilution: IHC:1:20-1:200, IF:1:50-1:200,

Restrictions: For Research Use only

Handling

Format: Liquid

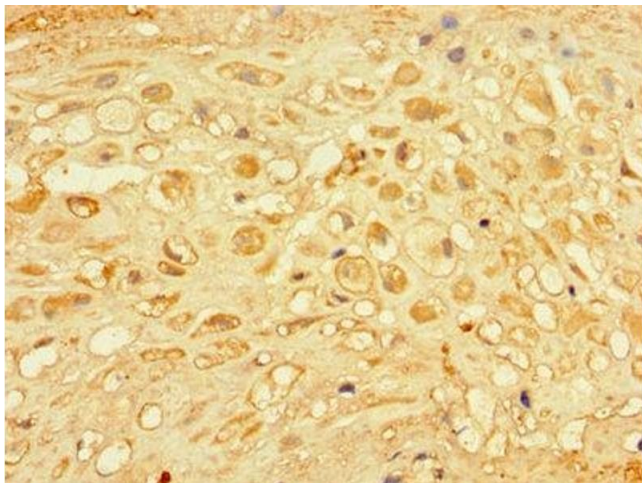
Buffer: Preservative: 0.03 % Proclin 300
Constituents: 50 % Glycerol, 0.01M PBS, PH 7.4

Preservative: ProClin

Precaution of Use: This product contains ProClin: a POISONOUS AND HAZARDOUS SUBSTANCE which should be handled by trained staff only.

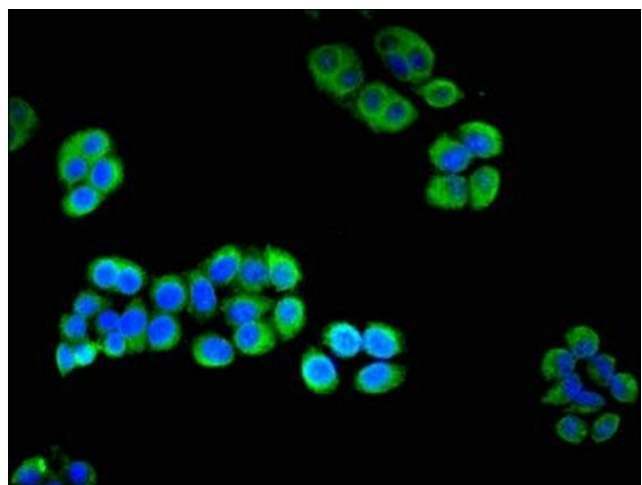
Storage: -20 °C, -80 °C

Storage Comment: Upon receipt, store at -20°C or -80°C. Avoid repeated freeze.



Immunohistochemistry

Image 1. Immunohistochemistry of paraffin-embedded human placenta tissue using ABIN7166973 at dilution of 1:100



Immunofluorescence

Image 2. Immunofluorescent analysis of PC-3 cells using ABIN7166973 at dilution of 1:100 and Alexa Fluor 488-conjugated AffiniPure Goat Anti-Rabbit IgG(H+L)