



Datasheet for ABIN7167041
anti-RDM1 antibody (AA 125-284)



[Go to Product page](#)

2 Images

Overview

Quantity:	100 µL
Target:	RDM1
Binding Specificity:	AA 125-284
Reactivity:	Human
Host:	Rabbit
Clonality:	Polyclonal
Conjugate:	This RDM1 antibody is un-conjugated
Application:	Immunohistochemistry (IHC), ELISA, Western Blotting (WB)

Product Details

Immunogen:	Recombinant Human RAD52 motif-containing protein 1 protein (125-284AA)
Isotype:	IgG
Cross-Reactivity:	Human
Purification:	Antigen Affinity Purified

Target Details

Target:	RDM1
Alternative Name:	RDM1 (RDM1 Products)
Background:	Background: May confer resistance to the antitumor agent cisplatin. Binds to DNA and RNA. Aliases: MGC33977 antibody, RAD52 homolog B antibody, RAD52 motif 1 antibody, RAD52

Target Details

motif containing 1 antibody, RAD52 motif-containing protein 1 antibody, RAD52B antibody, RDM1 antibody, RDM1_HUMAN antibody

UniProt: [Q8NG50](#)

Application Details

Application Notes: Recommended dilution: WB:1:200-1:1000, IHC:1:20-1:200,

Restrictions: For Research Use only

Handling

Format: Liquid

Buffer: PBS with 0.02 % sodium azide, 50 % glycerol, pH 7.3.

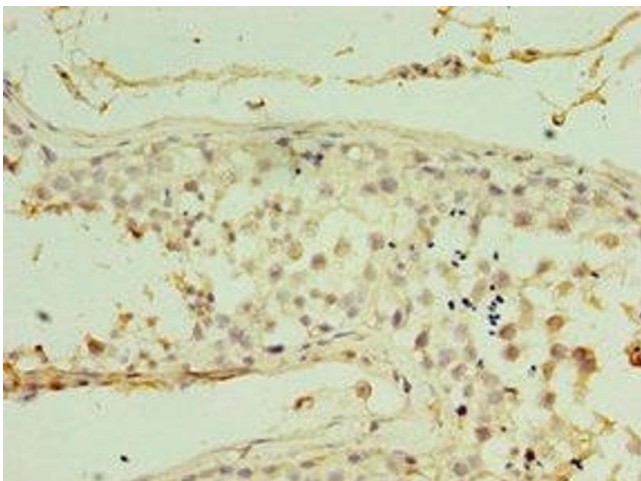
Preservative: Sodium azide

Precaution of Use: This product contains Sodium azide: a POISONOUS AND HAZARDOUS SUBSTANCE which should be handled by trained staff only.

Storage: -20 °C,-80 °C

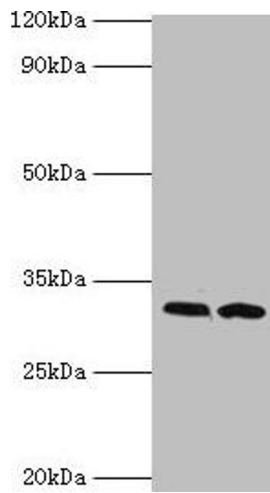
Storage Comment: Upon receipt, store at -20°C or -80°C. Avoid repeated freeze.

Images



Immunohistochemistry

Image 1. Immunohistochemistry of paraffin-embedded human testis tissue using ABIN7167041 at dilution of 1:100



Western Blotting

Image 2. Western blot All lanes: RDM1 antibody at 4 µg/mL
Lane 1: PC-3 whole cell lysate Lane 2: MCF-7 whole cell lysate
Secondary Goat polyclonal to rabbit IgG at 1/10000 dilution
Predicted band size: 32, 30, 16, 14, 29, 26, 9, 13, 19, 27 kDa
Observed band size: 32 kDa