

Datasheet for ABIN7167054
anti-IER3 antibody (AA 1-82)[Go to Product page](#)

1 Image

Overview

Quantity:	100 µg
Target:	IER3
Binding Specificity:	AA 1-82
Reactivity:	Human
Host:	Rabbit
Clonality:	Polyclonal
Conjugate:	This IER3 antibody is un-conjugated
Application:	ELISA, Immunofluorescence (IF)

Product Details

Immunogen:	Recombinant Human Radiation-inducible immediate-early gene IEX-1 protein (1-82AA)
Isotype:	IgG
Cross-Reactivity:	Human
Purification:	>95%, Protein G purified

Target Details

Target:	IER3
Alternative Name:	IER3 (IER3 Products)
Background:	Background: May play a role in the ERK signaling pathway by inhibiting the dephosphorylation of ERK by phosphatase PP2A-PPP2R5C holoenzyme. Acts also as an ERK downstream effector

Target Details

mediating survival. As a member of the NUPR1/RELB/IER3 survival pathway, may provide pancreatic ductal adenocarcinoma with remarkable resistance to cell stress, such as starvation or gemcitabine treatment.

Aliases: DIF2 antibody, Differentiation-dependent gene 2 protein antibody, GLY96 antibody, IER3 antibody, IEX1_HUMAN antibody, IEX1L antibody, Immediate early protein GLY96 antibody, Immediate early response 3 antibody, Immediate early response 3 protein antibody, Immediately early gene X 1 antibody, PACAP-responsive gene 1 protein antibody, PRG 1 antibody, PRG1 antibody, Protein DIF 2 antibody, Protein DIF-2 antibody, Protein PRG1 antibody, Radiation-inducible immediate-early gene IEX-1 antibody

UniProt: [P46695](#)

Pathways: [Regulation of Carbohydrate Metabolic Process](#)

Application Details

Application Notes: Recommended dilution: IF:1:50-1:200,

Restrictions: For Research Use only

Handling

Format: Liquid

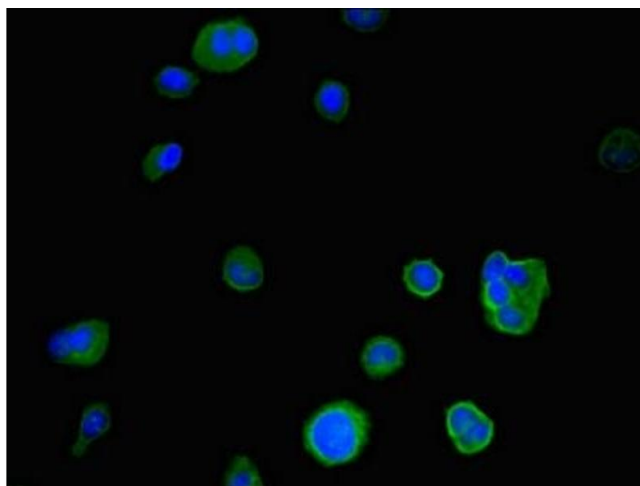
Buffer: Preservative: 0.03 % Proclin 300
Constituents: 50 % Glycerol, 0.01M PBS, PH 7.4

Preservative: ProClin

Precaution of Use: This product contains ProClin: a POISONOUS AND HAZARDOUS SUBSTANCE which should be handled by trained staff only.

Storage: -20 °C,-80 °C

Storage Comment: Upon receipt, store at -20°C or -80°C. Avoid repeated freeze.



Immunofluorescence

Image 1. Immunofluorescent analysis of MCF-7 cells using ABIN7167054 at dilution of 1:100 and Alexa Fluor 488-conjugated AffiniPure Goat Anti-Rabbit IgG(H+L)