

Datasheet for ABIN7167060  
**anti-RAF1 antibody (AA 1-648)**[Go to Product page](#)

## 4 Images

## Overview

Quantity:	100 µg
Target:	RAF1
Binding Specificity:	AA 1-648
Reactivity:	Human
Host:	Rabbit
Clonality:	Polyclonal
Conjugate:	This RAF1 antibody is un-conjugated
Application:	Western Blotting (WB), ELISA, Immunohistochemistry (IHC), Immunofluorescence (IF), Immunoprecipitation (IP)

## Product Details

Immunogen:	Recombinant Human RAF proto-oncogene serine/threonine-protein kinase protein (1-648AA)
Isotype:	IgG
Cross-Reactivity:	Human
Purification:	>95%, Protein G purified

## Target Details

Target:	RAF1
Alternative Name:	RAF1 ( <a href="#">RAF1 Products</a> )
Background:	Background: Serine/threonine-protein kinase that acts as a regulatory link between the

membrane-associated Ras GTPases and the MAPK/ERK cascade, and this critical regulatory link functions as a switch determining cell fate decisions including proliferation, differentiation, apoptosis, survival and oncogenic transformation. RAF1 activation initiates a mitogen-activated protein kinase (MAPK) cascade that comprises a sequential phosphorylation of the dual-specific MAPK kinases (MAP2K1/MEK1 and MAP2K2/MEK2) and the extracellular signal-regulated kinases (MAPK3/ERK1 and MAPK1/ERK2). The phosphorylated form of RAF1 (on residues Ser-338 and Ser-339, by PAK1) phosphorylates BAD/Bcl2-antagonist of cell death at Ser-75. Phosphorylates adenylyl cyclases: ADCY2, ADCY5 and ADCY6, resulting in their activation. Phosphorylates PPP1R12A resulting in inhibition of the phosphatase activity. Phosphorylates TNNT2/cardiac muscle troponin T. Can promote NF- $\kappa$ B activation and inhibit signal transducers involved in motility (ROCK2), apoptosis (MAP3K5/ASK1 and STK3/MST2), proliferation and angiogenesis (RB1). Can protect cells from apoptosis also by translocating to the mitochondria where it binds BCL2 and displaces BAD/Bcl2-antagonist of cell death. Regulates Rho signaling and migration, and is required for normal wound healing. Plays a role in the oncogenic transformation of epithelial cells via repression of the TJ protein, occludin (OCLN) by inducing the up-regulation of a transcriptional repressor SNAI2/SLUG, which induces down-regulation of OCLN. Restricts caspase activation in response to selected stimuli, notably Fas stimulation, pathogen-mediated macrophage apoptosis, and erythroid differentiation. Aliases: c Raf antibody, C-raf antibody, C-Raf proto-oncogene, serine/threonine kinase antibody, CMD1NN antibody, Cra1 transforming gene antibody, cRaf antibody, Cra1 transforming gene antibody, EC 2.7.11.1 antibody, kinase Raf1 antibody, Murine sarcoma 3611 oncogene 1 antibody, NS5 antibody, Oncogene MIL antibody, Oncogene RAF1 antibody, OTTHUMP00000160218 antibody, OTTHUMP00000207813 antibody, OTTHUMP00000209389 antibody, Protein kinase raf 1 antibody, Proto-oncogene c-RAF antibody, Raf 1 antibody, Raf 1 proto oncogene serine/threonine kinase antibody, RAF antibody, Raf proto oncogene serine/threonine protein kinase antibody, RAF proto-oncogene serine/threonine-protein kinase antibody, RAF-1 antibody, RAF1 antibody, RAF1\_HUMAN antibody, Similar to murine leukemia viral (V-raf-1) oncogene homolog 1 antibody, TRANSFORMING REPLICATION-DEFECTIVE MURINE RETROVIRUS 3611-MSV antibody, v raf 1 murine leukemia viral oncogene homolog 1 antibody, v-raf murine sarcoma viral oncogene homolog 1 antibody, v-raf-1 murine leukemia viral oncogene-like protein 1 antibody, vraf1 murine leukemia viral oncogene homolog 1 antibody

---

UniProt: [P04049](#)

---

Pathways: [MAPK Signaling](#), [RTK Signaling](#), [Fc-epsilon Receptor Signaling Pathway](#), [Neurotrophin Signaling Pathway](#), [cAMP Metabolic Process](#), [Stem Cell Maintenance](#), [Hepatitis C](#), [Autophagy](#), [Signaling](#)

## Target Details

of Hepatocyte Growth Factor Receptor, VEGF Signaling, BCR Signaling

## Application Details

Application Notes: Recommended dilution: WB:1:500-1:5000, IHC:1:1000-1:2000, IF:1:200-1:500, IP:1:200-1:2000,

Restrictions: For Research Use only

## Handling

Format: Liquid

Buffer: Preservative: 0.03 % Proclin 300  
Constituents: 50 % Glycerol, 0.01M PBS, PH 7.4

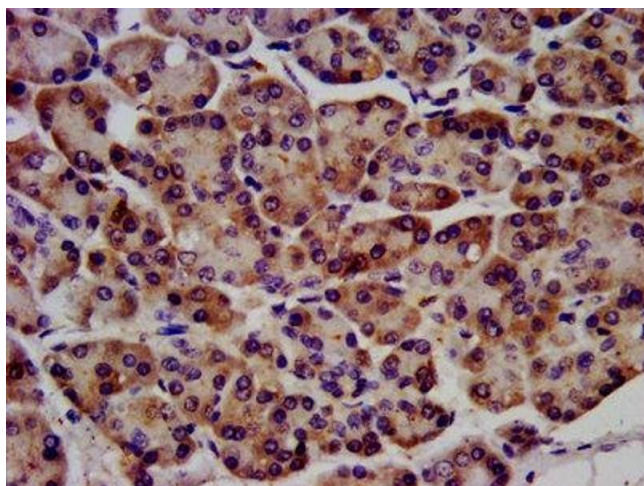
Preservative: ProClin

Precaution of Use: This product contains ProClin: a POISONOUS AND HAZARDOUS SUBSTANCE which should be handled by trained staff only.

Storage: -20 °C,-80 °C

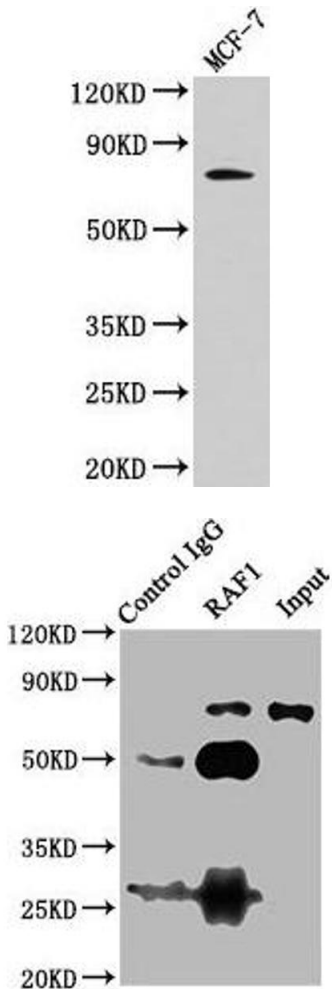
Storage Comment: Upon receipt, store at -20°C or -80°C. Avoid repeated freeze.

## Images



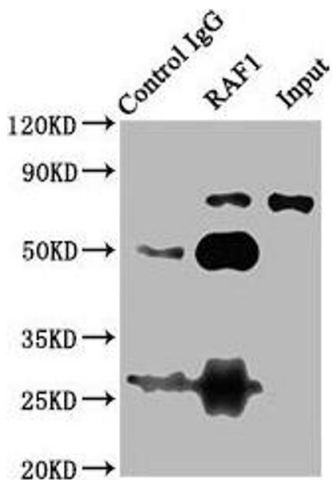
### Immunohistochemistry

**Image 1.** IHC image of ABIN7167060 diluted at 1:1200 and staining in paraffin-embedded human pancreatic tissue performed on a Leica Bond™ system. After dewaxing and hydration, antigen retrieval was mediated by high pressure in a citrate buffer (pH 6.0). Section was blocked with 10% normal goat serum 30min at RT. Then primary antibody (1% BSA) was incubated at 4°C overnight. The primary is detected by a biotinylated secondary antibody and visualized using an HRP conjugated SP system.



#### Western Blotting

**Image 2.** Western Blot Positive WB detected in: MCF-7 whole cell lysate All lanes: RAF1 antibody at 4 µg/mL Secondary Goat polyclonal to rabbit IgG at 1/50000 dilution Predicted band size: 74, 76 kDa Observed band size: 74 kDa



#### Western Blotting

**Image 3.** Immunoprecipitating RAF1 in 293T whole cell lysate Lane 1: Rabbit control IgG (1 µg) instead of ABIN7167060 in 293T whole cell lysate. For western blotting, a HRP-conjugated Protein G antibody was used as the secondary antibody (1/2000) Lane 2: ABIN7167060 (6 µg) + 293T whole cell lysate (500 µg) Lane 3: 293T whole cell lysate (10 µg)

Please check the [product details page](#) for more images. Overall 4 images are available for ABIN7167060.