



[Go to Product page](#)

Datasheet for ABIN7167108  
**anti-RAPGEF4 antibody (AA 1-210)**

2 Images

### Overview

Quantity:	100 µL
Target:	RAPGEF4
Binding Specificity:	AA 1-210
Reactivity:	Human
Host:	Rabbit
Clonality:	Polyclonal
Conjugate:	This RAPGEF4 antibody is un-conjugated
Application:	ELISA, Immunohistochemistry (IHC)

### Product Details

Immunogen:	Recombinant Human Rap guanine nucleotide exchange factor 4 protein (1-210AA)
Isotype:	IgG
Cross-Reactivity:	Human
Purification:	Antigen Affinity Purified

### Target Details

Target:	RAPGEF4
Alternative Name:	RAPGEF4 ( <a href="#">RAPGEF4 Products</a> )
Background:	Background: Guanine nucleotide exchange factor (GEF) for RAP1A, RAP1B and RAP2A small GTPases that is activated by binding cAMP. Seems not to activate RAB3A. Involved in cAMP-

## Target Details

---

dependent, PKA-independent exocytosis through interaction with RIMS2 (By similarity).

Aliases: CAMP GEFII antibody, cAMP regulated guanine nucleotide exchange factor II antibody, cAMP-GEFII antibody, cAMP-regulated guanine nucleotide exchange factor II antibody, CAMPGEFII antibody, CGEF 2 antibody, CGEF2 antibody, Epac 2 antibody, EPAC2 antibody, Exchange factor directly activated by cAMP 2 antibody, Exchange protein directly activated by cAMP 2 antibody, Nbla00496 antibody, Putative protein product of Nbla00496 antibody, Rap guanine nucleotide exchange factor (GEF) 4 antibody, Rap guanine nucleotide exchange factor 4 antibody, RAPGEF 4 antibody, Rapgef4 antibody, RPGF4\_HUMAN antibody

---

UniProt: [Q8WZA2](#)

---

Pathways: [Hormone Transport, Smooth Muscle Cell Migration](#)

## Application Details

---

Application Notes: Recommended dilution: IHC:1:20-1:200,

---

Restrictions: For Research Use only

## Handling

---

Format: Liquid

---

Buffer: PBS with 0.02 % sodium azide, 50 % glycerol, pH 7.3.

---

Preservative: Sodium azide

---

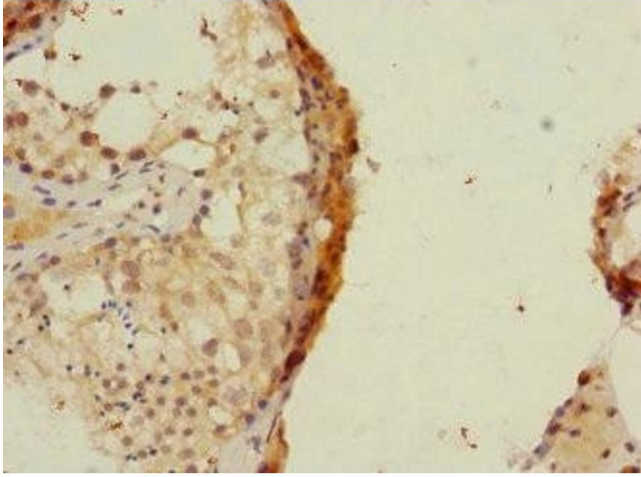
Precaution of Use: This product contains Sodium azide: a POISONOUS AND HAZARDOUS SUBSTANCE which should be handled by trained staff only.

---

Storage: -20 °C,-80 °C

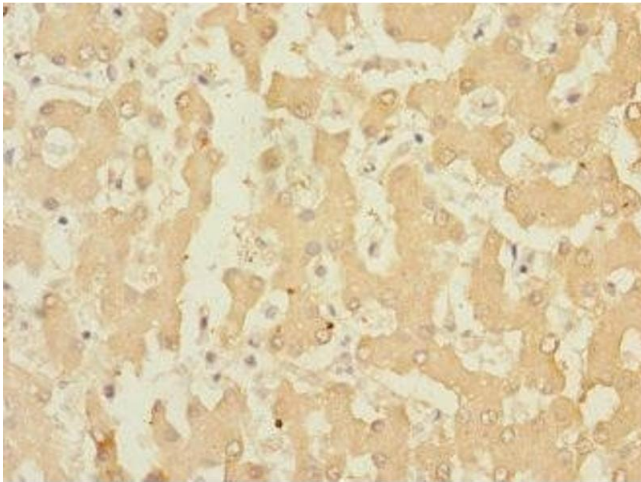
---

Storage Comment: Upon receipt, store at -20°C or -80°C. Avoid repeated freeze.



#### Immunohistochemistry

**Image 1.** Immunohistochemistry of paraffin-embedded human testis tissue using ABIN7167108 at dilution of 1:100



#### Immunohistochemistry

**Image 2.** Immunohistochemistry of paraffin-embedded human liver tissue using ABIN7167108 at dilution of 1:100