

Datasheet for ABIN7167122
anti-RASSF1 antibody (AA 23-145)[Go to Product page](#)

1 Image

Overview

Quantity:	100 µg
Target:	RASSF1
Binding Specificity:	AA 23-145
Reactivity:	Human
Host:	Rabbit
Clonality:	Polyclonal
Conjugate:	This RASSF1 antibody is un-conjugated
Application:	ELISA, Immunohistochemistry (IHC)

Product Details

Immunogen:	Recombinant Human Ras association domain-containing protein 1 protein (23-145AA)
Isotype:	IgG
Cross-Reactivity:	Human
Purification:	>95%, Protein G purified

Target Details

Target:	RASSF1
Alternative Name:	RASSF1 (RASSF1 Products)
Background:	Background: Potential tumor suppressor. Required for death receptor-dependent apoptosis. Mediates activation of STK3/MST2 and STK4/MST1 during Fas-induced apoptosis by

Target Details

preventing their dephosphorylation. When associated with MOAP1, promotes BAX conformational change and translocation to mitochondrial membranes in response to TNF and TNFSF10 stimulation. Isoform A interacts with CDC20, an activator of the anaphase-promoting complex, APC, resulting in the inhibition of APC activity and mitotic progression. Inhibits proliferation by negatively regulating cell cycle progression at the level of G1/S-phase transition by regulating accumulation of cyclin D1 protein. Isoform C has been shown not to perform these roles, no function has been identified for this isoform. Isoform A disrupts interactions among MDM2, DAXX and USP7, thus contributing to the efficient activation of TP53 by promoting MDM2 self-ubiquitination in cell-cycle checkpoint control in response to DNA damage.

Aliases: 123F2 antibody, Cardiac specific ras association domain family 1 protein antibody, cardiac-specific ras association domain family 1 protein, 123F2 antibody, NORE2A antibody, OTTHUMP00000195503 antibody, OTTHUMP00000195504 antibody, OTTHUMP00000195505 antibody, OTTHUMP00000195507 antibody, Pancreas specific ras association domain family 1 protein antibody, Ras association (RalGDS/AF 6) domain family member 1 antibody, Ras association domain-containing protein 1 antibody, RASF1_HUMAN antibody, Rassf1 antibody, RASSF1A antibody, RDA32 antibody, REH3P21 antibody, Tumor suppressor protein RDA32 antibody, WUGSC:HLUCA12.5 antibody

UniProt: [Q9NS23](#)

Application Details

Application Notes: Recommended dilution: IHC:1:20-1:200,

Restrictions: For Research Use only

Handling

Format: Liquid

Buffer: Preservative: 0.03 % Proclin 300
Constituents: 50 % Glycerol, 0.01M PBS, pH 7.4

Preservative: ProClin

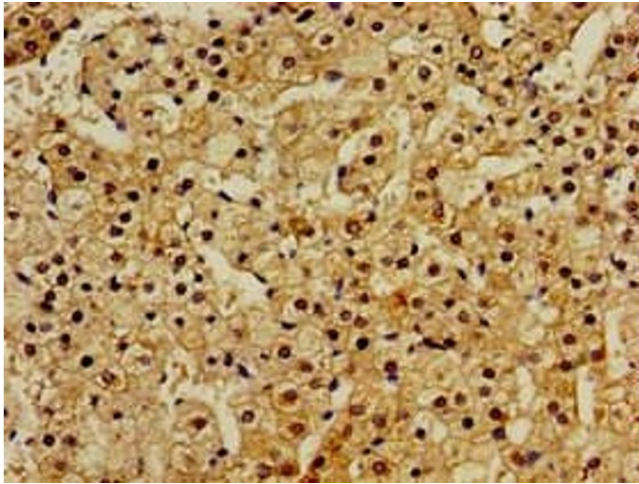
Precaution of Use: This product contains ProClin: a POISONOUS AND HAZARDOUS SUBSTANCE which should be handled by trained staff only.

Storage: -20 °C,-80 °C

Handling

Storage Comment: Upon receipt, store at -20°C or -80°C. Avoid repeated freeze.

Images



Immunohistochemistry

Image 1. Immunohistochemistry of paraffin-embedded human adrenal gland tissue using ABIN7167122 at dilution of 1:100