

Datasheet for ABIN7167138
anti-RASSF5 antibody (AA 1-265)[Go to Product page](#)

2 Images

Overview

Quantity:	100 µL
Target:	RASSF5
Binding Specificity:	AA 1-265
Reactivity:	Human
Host:	Rabbit
Clonality:	Polyclonal
Conjugate:	This RASSF5 antibody is un-conjugated
Application:	Western Blotting (WB), Immunohistochemistry (IHC), ELISA

Product Details

Immunogen:	Recombinant Human Ras association domain-containing protein 5 protein (1-265AA)
Isotype:	IgG
Cross-Reactivity:	Human
Purification:	Antigen Affinity Purified

Target Details

Target:	RASSF5
Alternative Name:	RASSF5 (RASSF5 Products)
Background:	Background: Potential tumor suppressor. Seems to be involved in lymphocyte adhesion by linking RAP1A activation upon T-cell receptor or chemokine stimulation to integrin activation.

Target Details

Isoform 2 stimulates lymphocyte polarization and the patch-like distribution of ITGAL/LFA-1, resulting in an enhanced adhesion to ICAM1. Together with RAP1A may participate in regulation of microtubule growth. The association of isoform 2 with activated RAP1A is required for directional movement of endothelial cells during wound healing. May be involved in regulation of Ras apoptotic function. The RASSF5-STK4/MST1 complex may mediate HRAS and KRAS induced apoptosis.

Aliases: Maxp 1 antibody, MAXP1 antibody, MGC10823 antibody, MGC17344 antibody, New ras effector 1 antibody, NORE 1 antibody, NORE1 antibody, NORE1A antibody, NORE1B antibody, Novel Ras effector 1 antibody, RAP1 Binding Protein antibody, RAPL antibody, Ras association (RalGDS/AF 6) domain family 5 antibody, Ras association (RalGDS/AF 6) domain family member 5 antibody, Ras association domain containing family protein 5 antibody, Ras association domain-containing protein 5 antibody, Ras effector like protein antibody, RASF5_HUMAN antibody, RASSF 3 antibody, RASSF 5 antibody, RASSF3 antibody, RASSF5 antibody, Regulator for cell adhesion and polarization enriched in lymphoid tissue antibody, Regulator for cell adhesion and polarization enriched in lymphoid tissues antibody, Tumor suppressor RASSF3 antibody

UniProt: [Q8WWW0](#)

Pathways: [TCR Signaling](#)

Application Details

Application Notes: Recommended dilution: WB:1:1000-1:5000, IHC:1:20-1:200,

Restrictions: For Research Use only

Handling

Format: Liquid

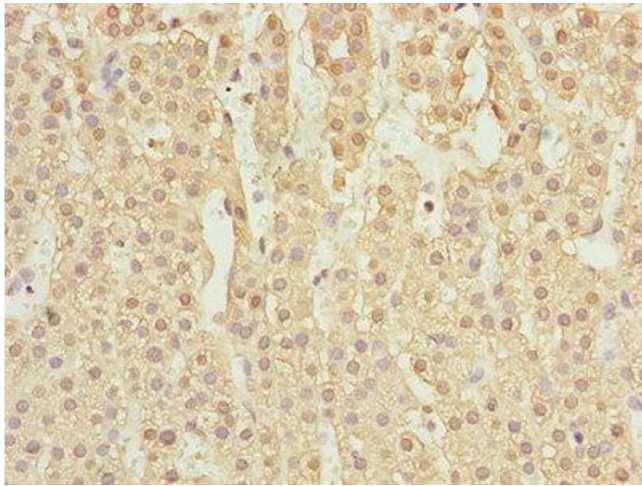
Buffer: PBS with 0.02 % sodium azide, 50 % glycerol, pH 7.3.

Preservative: Sodium azide

Precaution of Use: This product contains Sodium azide: a POISONOUS AND HAZARDOUS SUBSTANCE which should be handled by trained staff only.

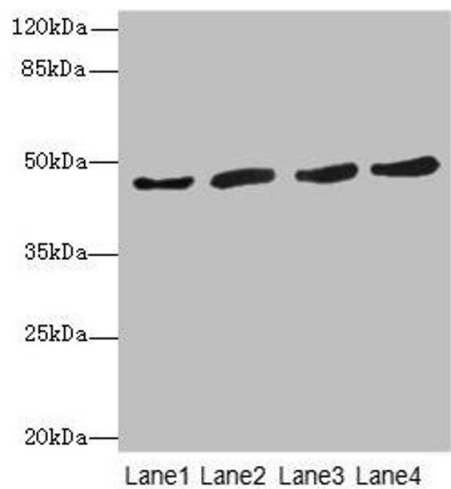
Storage: -20 °C, -80 °C

Storage Comment: Upon receipt, store at -20°C or -80°C. Avoid repeated freeze.



Immunohistochemistry

Image 1. Immunohistochemistry of paraffin-embedded human adrenal gland tissue using ABIN7167138 at dilution of 1:100



Western Blotting

Image 2. Western blot All lanes: RASSF5antibody at 5.46 μ g/mL Lane 1: Thp-1 whole cell lysate Lane 2: 293T whole cell lysate Lane 3: Jurkat whole cell lysate Lane 4: A549 whole cell lysate Secondary Goat polyclonal to rabbit IgG at 1/10000 dilution Predicted band size: 48, 31, 38 kDa Observed band size: 48 kDa