

Datasheet for ABIN7167139
anti-RASSF6 antibody (AA 1-303)

3 Images

[Go to Product page](#)

Overview

Quantity:	100 µL
Target:	RASSF6
Binding Specificity:	AA 1-303
Reactivity:	Human
Host:	Rabbit
Clonality:	Polyclonal
Conjugate:	This RASSF6 antibody is un-conjugated
Application:	ELISA, Immunohistochemistry (IHC)

Product Details

Immunogen:	Recombinant Human Ras association domain-containing protein 6 protein (1-303AA)
Isotype:	IgG
Cross-Reactivity:	Human
Purification:	Antigen Affinity Purified

Target Details

Target:	RASSF6
Alternative Name:	RASSF6 (RASSF6 Products)
Background:	Background: Involved in the induction of apoptosis, through both caspase-dependent and caspase-independent pathways. May act as a Ras effector protein. May suppress the serum-

Target Details

induced basal levels of NF-kappa-B (By similarity).

Aliases: RASSF6 antibody, Ras association domain-containing protein 6 antibody

UniProt: [Q6ZTQ3](#)

Application Details

Application Notes: Recommended dilution: IHC:1:20-1:500,

Restrictions: For Research Use only

Handling

Format: Liquid

Buffer: PBS with 0.02 % sodium azide, 50 % glycerol, pH 7.3.

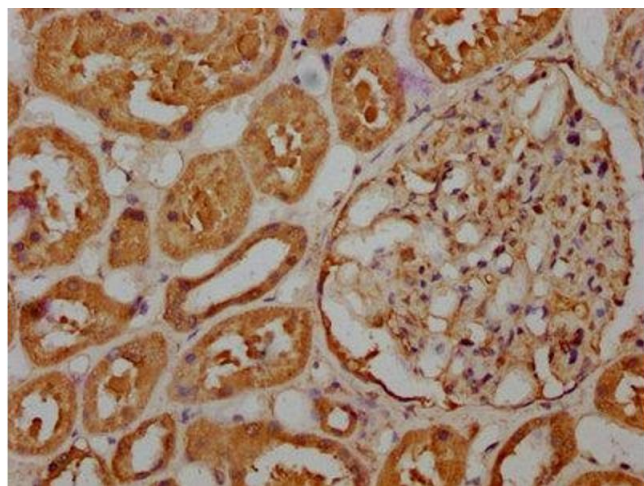
Preservative: Sodium azide

Precaution of Use: This product contains Sodium azide: a POISONOUS AND HAZARDOUS SUBSTANCE which should be handled by trained staff only.

Storage: -20 °C,-80 °C

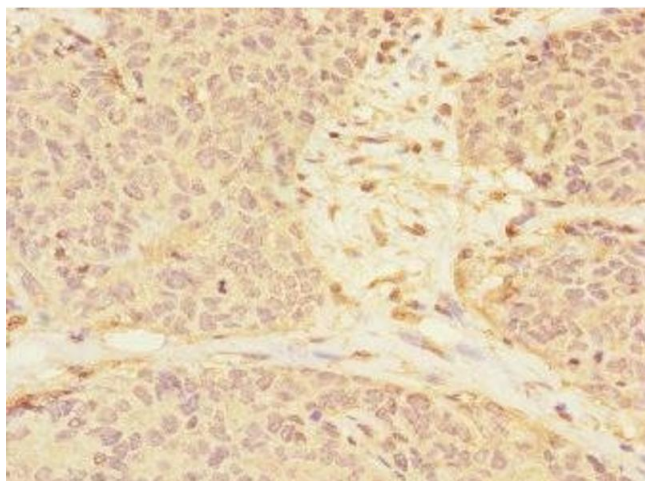
Storage Comment: Upon receipt, store at -20°C or -80°C. Avoid repeated freeze.

Images



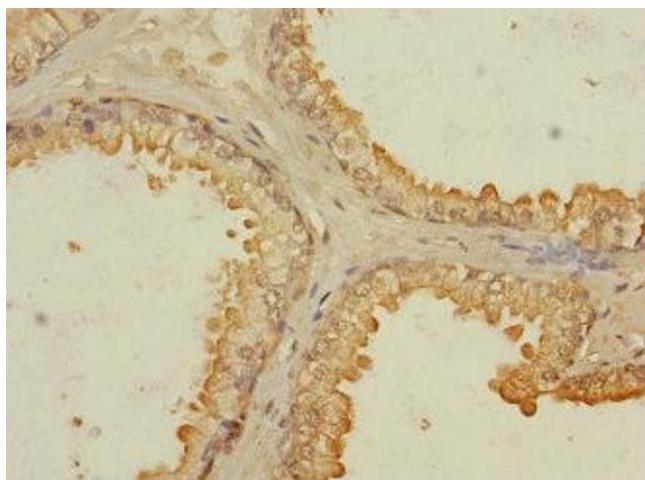
Immunohistochemistry

Image 1. IHC image of ABIN7167139 diluted at 1:263 and staining in paraffin-embedded human kidney tissue performed on a Leica Bond™ system. After dewaxing and hydration, antigen retrieval was mediated by high pressure in a citrate buffer (pH 6.0). Section was blocked with 10% normal goat serum 30min at RT. Then primary antibody (1% BSA) was incubated at 4°C overnight. The primary is detected by a biotinylated secondary antibody and visualized using an HRP conjugated SP system.



Immunohistochemistry

Image 2. Immunohistochemistry of paraffin-embedded human ovarian cancer using ABIN7167139 at dilution of 1:100



Immunohistochemistry

Image 3. Immunohistochemistry of paraffin-embedded human prostate cancer using ABIN7167139 at dilution of 1:100