



[Go to Product page](#)

Datasheet for ABIN7167152  
**anti-RASA4 antibody (AA 60-290)**

2 Images

Overview

Quantity:	100 µL
Target:	RASA4
Binding Specificity:	AA 60-290
Reactivity:	Human
Host:	Rabbit
Clonality:	Polyclonal
Conjugate:	This RASA4 antibody is un-conjugated
Application:	ELISA, Immunohistochemistry (IHC)

Product Details

Immunogen:	Recombinant Human Ras GTPase-activating protein 4 protein (60-290AA)
Isotype:	IgG
Cross-Reactivity:	Human
Purification:	Antigen Affinity Purified

Target Details

Target:	RASA4
Alternative Name:	RASA4 ( <a href="#">RASA4 Products</a> )
Background:	Background: Ca(2+)-dependent Ras GTPase-activating protein, that switches off the Ras-MAPK pathway following a stimulus that elevates intracellular calcium. Functions as an adaptor for

## Target Details

Cdc42 and Rac1 during FcR-mediated phagocytosis.

Aliases: RASA4 antibody, CAPRI antibody, GAPL antibody, KIAA0538 antibody, Ras GTPase-activating protein 4 antibody, Calcium-promoted Ras inactivator antibody, Ras p21 protein activator 4 antibody, RasGAP-activating-like protein 2 antibody

UniProt: [O43374](#)

## Application Details

Application Notes: Recommended dilution: IHC:1:20-1:200,

Restrictions: For Research Use only

## Handling

Format: Liquid

Buffer: PBS with 0.02 % sodium azide, 50 % glycerol, pH 7.3.

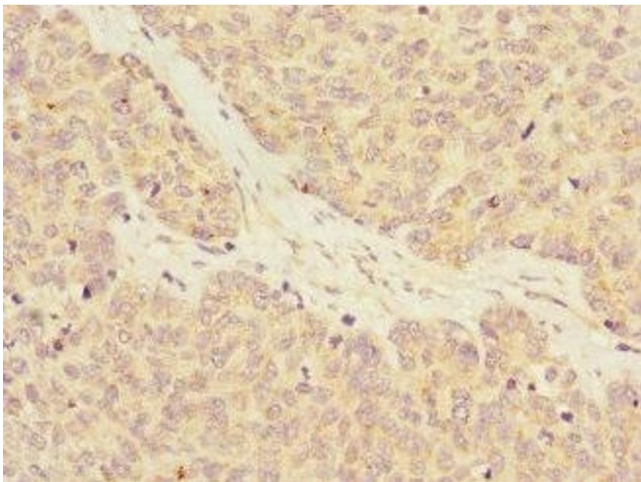
Preservative: Sodium azide

Precaution of Use: This product contains Sodium azide: a POISONOUS AND HAZARDOUS SUBSTANCE which should be handled by trained staff only.

Storage: -20 °C,-80 °C

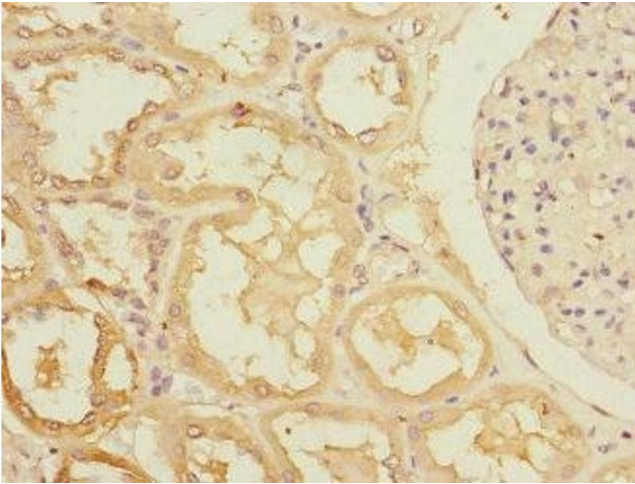
Storage Comment: Upon receipt, store at -20°C or -80°C. Avoid repeated freeze.

## Images



### Immunohistochemistry

**Image 1.** Immunohistochemistry of paraffin-embedded human ovarian cancer using ABIN7167152 at dilution of 1:100



### Immunohistochemistry

**Image 2.** Immunohistochemistry of paraffin-embedded human kidney tissue using ABIN7167152 at dilution of 1:100