

Datasheet for ABIN7167172
anti-RASGEF1A antibody (AA 1-207)[Go to Product page](#)

1 Image

Overview

Quantity:	100 µL
Target:	RASGEF1A
Binding Specificity:	AA 1-207
Reactivity:	Human
Host:	Rabbit
Clonality:	Polyclonal
Conjugate:	This RASGEF1A antibody is un-conjugated
Application:	ELISA, Immunofluorescence (IF)

Product Details

Immunogen:	Recombinant Human Ras-GEF domain-containing family member 1A protein (1-207AA)
Isotype:	IgG
Cross-Reactivity:	Human
Purification:	Antigen Affinity Purified

Target Details

Target:	RASGEF1A
Alternative Name:	RASGEF1A (RASGEF1A Products)
Background:	Background: Guanine nucleotide exchange factor (GEF) with specificity for RAP2A, KRAS, HRAS, and NRAS (in vitro). Plays a role in cell migration.

Target Details

Aliases: CG4853 gene product antibody, Ras-GEF domain-containing family member 1A antibody, RasGEF domain family, member 1A antibody, rasgef1a antibody, RGF1A_HUMAN antibody

UniProt: [Q8N9B8](#)

Application Details

Application Notes: Recommended dilution: IF:1:50-1:200,

Restrictions: For Research Use only

Handling

Format: Liquid

Buffer: Preservative: 0.03 % Proclin 300
Constituents: 50 % Glycerol, 0.01M PBS, pH 7.4

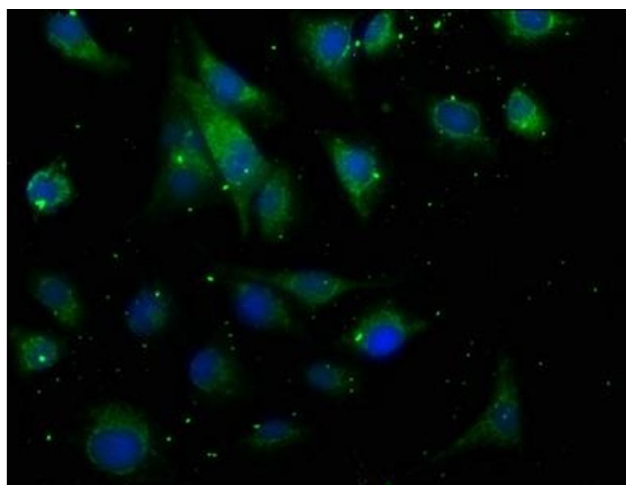
Preservative: ProClin

Precaution of Use: This product contains ProClin: a POISONOUS AND HAZARDOUS SUBSTANCE which should be handled by trained staff only.

Storage: -20 °C, -80 °C

Storage Comment: Upon receipt, store at -20°C or -80°C. Avoid repeated freeze.

Images



Immunofluorescence

Image 1. Immunofluorescence staining of U251 cells with ABIN7167172 at 1:50, counter-stained with DAPI. The cells were fixed in 4 % formaldehyde, permeabilized using 0.2 % Triton X-100 and blocked in 10 % normal Goat Serum. The cells were then incubated with the antibody overnight at 4 °C. The secondary antibody was Alexa Fluor 488-conjugated AffiniPure Goat Anti-Rabbit IgG(H+L).