



[Go to Product page](#)

Datasheet for ABIN7167176
anti-RASGEF1B antibody (AA 1-300)

1 Image

Overview

| | |
|----------------------|---|
| Quantity: | 100 µg |
| Target: | RASGEF1B |
| Binding Specificity: | AA 1-300 |
| Reactivity: | Human |
| Host: | Rabbit |
| Clonality: | Polyclonal |
| Conjugate: | This RASGEF1B antibody is un-conjugated |
| Application: | ELISA, Immunohistochemistry (IHC) |

Product Details

| | |
|-------------------|--|
| Immunogen: | Recombinant Human Ras-GEF domain-containing family member 1B protein (1-300AA) |
| Isotype: | IgG |
| Cross-Reactivity: | Human |
| Purification: | >95%, Protein G purified |

Target Details

| | |
|-------------------|--|
| Target: | RASGEF1B |
| Alternative Name: | RASGEF1B (RASGEF1B Products) |
| Background: | Background: Guanine nucleotide exchange factor (GEF) with specificity for RAP2A, it doesn't seem to activate other Ras family proteins (in vitro). |

Target Details

Aliases: FLJ31695 antibody, GPI gamma-4 antibody, GPIG4 antibody, MGC46251 antibody, Ras-GEF domain-containing family member 1B antibody, RasGEF domain family member 1B antibody, RASGEF1B antibody, RGF1B_HUMAN antibody

UniProt: [Q0VAM2](#)

Application Details

Application Notes: Recommended dilution: IHC:1:20-1:200,

Restrictions: For Research Use only

Handling

Format: Liquid

Buffer: Preservative: 0.03 % Proclin 300
Constituents: 50 % Glycerol, 0.01M PBS, PH 7.4

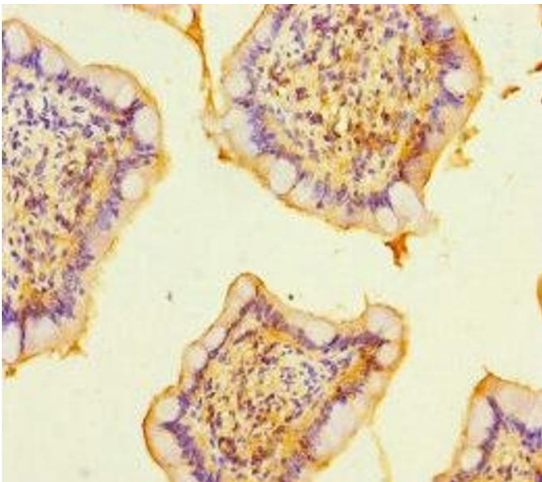
Preservative: ProClin

Precaution of Use: This product contains ProClin: a POISONOUS AND HAZARDOUS SUBSTANCE which should be handled by trained staff only.

Storage: -20 °C,-80 °C

Storage Comment: Upon receipt, store at -20°C or -80°C. Avoid repeated freeze.

Images



Immunohistochemistry

Image 1. Immunohistochemistry of paraffin-embedded human small intestine tissue using ABIN7167176 at dilution of 1:100