

Datasheet for ABIN7167192
anti-RERG antibody (AA 1-199)[Go to Product page](#)

4 Images

Overview

Quantity:	100 µg
Target:	RERG
Binding Specificity:	AA 1-199
Reactivity:	Human
Host:	Rabbit
Clonality:	Polyclonal
Conjugate:	This RERG antibody is un-conjugated
Application:	ELISA, Western Blotting (WB), Immunohistochemistry (IHC)

Product Details

Immunogen:	Recombinant Human Ras-related and estrogen-regulated growth inhibitor protein (1-199AA)
Isotype:	IgG
Cross-Reactivity:	Human, Mouse, Rat
Purification:	>95%, Protein G purified

Target Details

Target:	RERG
Alternative Name:	RERG (RERG Products)
Background:	Background: Binds GDP/GTP and possesses intrinsic GTPase activity. Has higher affinity for GDP than for GTP. In cell lines overexpression leads to a reduction in the rate of proliferation,

Target Details

colony formation and in tumorigenic potential.

Aliases: MGC15754 antibody, RAS like estrogen regulated growth inhibitor antibody, Ras related and estrogen regulated growth inhibitor antibody, Ras-related and estrogen-regulated growth inhibitor antibody, Rerg antibody, RERG_HUMAN antibody, Weakly similar to N ras protein [H.sapiens] antibody

UniProt: [Q96A58](#)

Application Details

Application Notes: Recommended dilution: WB:1:500-2000, IHC:1:20-1:200,

Restrictions: For Research Use only

Handling

Format: Liquid

Buffer: Preservative: 0.03 % Proclin 300
Constituents: 50 % Glycerol, 0.01M PBS, PH 7.4

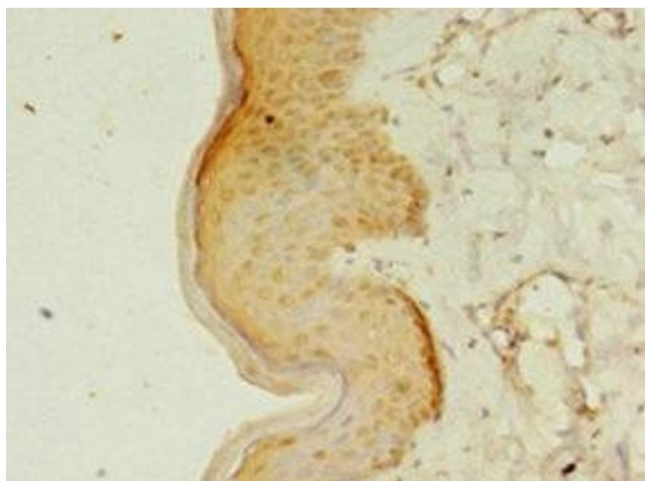
Preservative: ProClin

Precaution of Use: This product contains ProClin: a POISONOUS AND HAZARDOUS SUBSTANCE which should be handled by trained staff only.

Storage: -20 °C,-80 °C

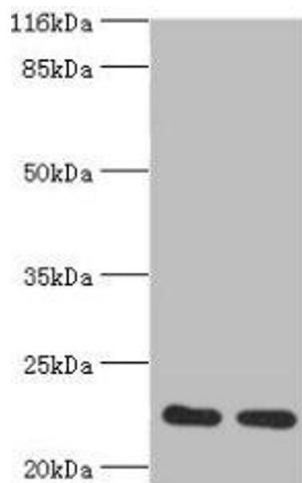
Storage Comment: Upon receipt, store at -20°C or -80°C. Avoid repeated freeze.

Images



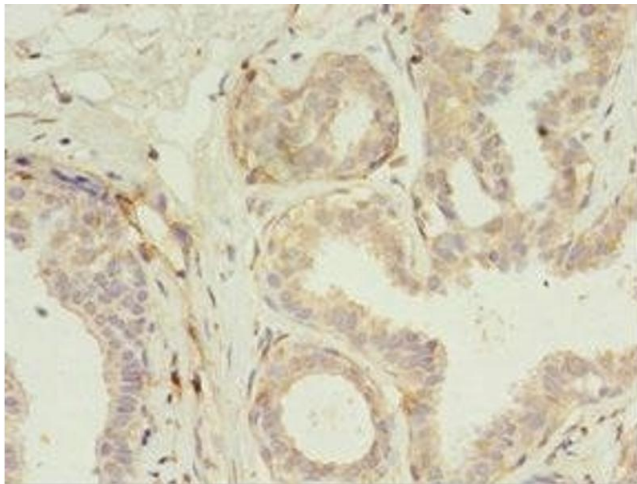
Immunohistochemistry

Image 1. Immunohistochemistry of paraffin-embedded human skin tissue using ABIN7167192 at dilution of 1:100



Western Blotting

Image 2. Western blot All lanes: RERG antibody at 2 µg/mL
Lane 1: Mouse thymus tissue Lane 2: Rat lung tissue
Secondary Goat polyclonal to rabbit at 1/10000 dilution
Predicted band size: 23, 21 kDa Observed band size: 23 kDa



Immunohistochemistry

Image 3. Immunohistochemistry of paraffin-embedded human breast cancer using ABIN7167192 at dilution of 1:100

Please check the [product details page](#) for more images. Overall 4 images are available for ABIN7167192.