

Datasheet for ABIN7167196
anti-RAC1 antibody (AA 11-185)[Go to Product page](#)

4 Images

Overview

Quantity:	100 µg
Target:	RAC1
Binding Specificity:	AA 11-185
Reactivity:	Human
Host:	Rabbit
Clonality:	Polyclonal
Conjugate:	This RAC1 antibody is un-conjugated
Application:	Immunohistochemistry (IHC), ELISA, Immunofluorescence (IF)

Product Details

Immunogen:	Recombinant Human Ras-related C3 botulinum toxin substrate 1 protein (11-185AA)
Isotype:	IgG
Cross-Reactivity:	Human
Purification:	>95%, Protein G purified

Target Details

Target:	RAC1
Abstract:	RAC1 Products
Background:	Background: Plasma membrane-associated small GTPase which cycles between active GTP-bound and inactive GDP-bound states. In its active state, binds to a variety of effector proteins

Target Details

to regulate cellular responses such as secretory processes, phagocytosis of apoptotic cells, epithelial cell polarization and growth-factor induced formation of membrane ruffles. Rac1 p21/rho GDI heterodimer is the active component of the cytosolic factor sigma 1, which is involved in stimulation of the NADPH oxidase activity in macrophages. Essential for the SPATA13-mediated regulation of cell migration and adhesion assembly and disassembly. Stimulates PKN2 kinase activity. In concert with RAB7A, plays a role in regulating the formation of RBs (ruffled borders) in osteoclasts. In glioma cells, promotes cell migration and invasion. In podocytes, promotes nuclear shuttling of NR3C2, this modulation is required for a proper kidney functioning. Required for atypical chemokine receptor ACKR2-induced LIMK1-PAK1-dependent phosphorylation of cofilin (CFL1) and for up-regulation of ACKR2 from endosomal compartment to cell membrane, increasing its efficiency in chemokine uptake and degradation. In synapses, seems to mediate the regulation of F-actin cluster formation performed by SHANK3.

Aliases: Cell migration inducing gene 5 protein antibody, Cell migration-inducing gene 5 protein antibody, MGC111543 antibody, MIG5 antibody, Migration inducing gene 5 antibody, Migration inducing protein 5 antibody, p21 Rac1 antibody, p21-Rac1 antibody, Rac 1 antibody, RAC1 antibody, RAC1_HUMAN antibody, Ras like protein TC25 antibody, Ras related C3 botulinum toxin substrate 1 (rho family, small GTP binding protein Rac1) antibody, Ras-like protein TC25 antibody, Ras-related C3 botulinum toxin substrate 1 antibody, Rho family small GTP binding protein Rac1 antibody, TC 25 antibody, TC25 antibody

UniProt: [P63000](#)

Pathways: [WNT Signaling](#), [Regulation of Actin Filament Polymerization](#), [Cell-Cell Junction Organization](#), [Thromboxane A2 Receptor Signaling](#), [VEGF Signaling](#)

Application Details

Application Notes: Recommended dilution: IHC:1:100-1:1200, IF:1:200-1:500,

Restrictions: For Research Use only

Handling

Format: Liquid

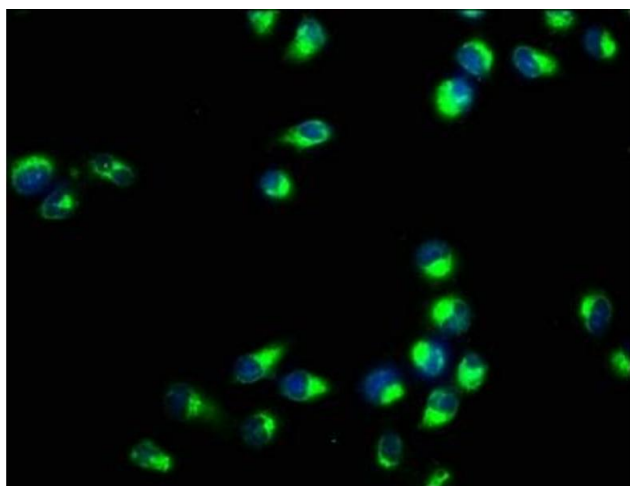
Buffer: Preservative: 0.03 % Proclin 300
Constituents: 50 % Glycerol, 0.01M PBS, PH 7.4

Preservative: ProClin

Handling

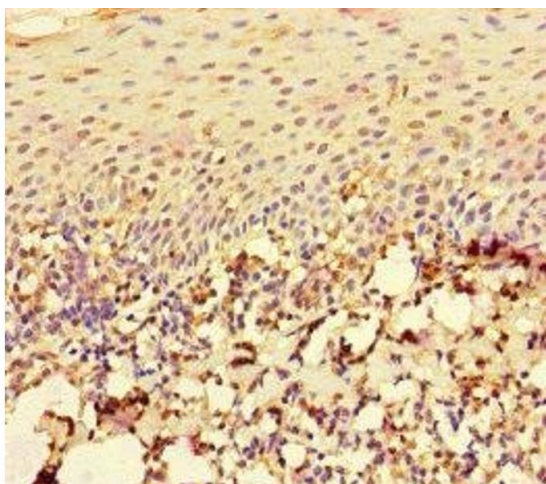
Precaution of Use:	This product contains ProClin: a POISONOUS AND HAZARDOUS SUBSTANCE which should be handled by trained staff only.
Storage:	-20 °C,-80 °C
Storage Comment:	Upon receipt, store at -20°C or -80°C. Avoid repeated freeze.

Images



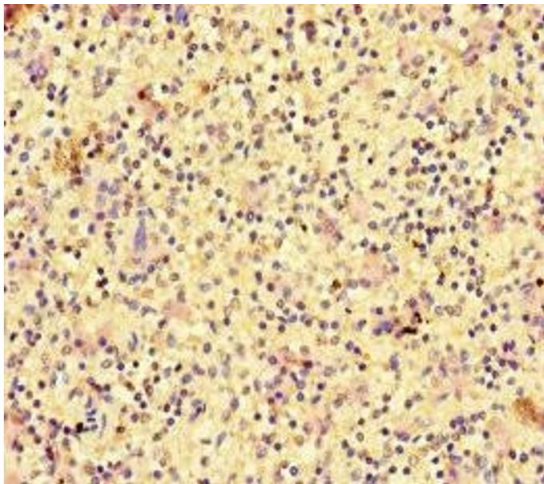
Immunofluorescence

Image 1. Immunofluorescence staining of HeLa cells with ABIN7167196 at 1:400, counter-stained with DAPI. The cells were fixed in 4% formaldehyde, permeabilized using 0.2% Triton X-100 and blocked in 10% normal Goat Serum. The cells were then incubated with the antibody overnight at 4°C. The secondary antibody was Alexa Fluor 488-conjugated AffiniPure Goat Anti-Rabbit IgG(H+L).



Immunohistochemistry

Image 2. Immunohistochemistry of paraffin-embedded human tonsil tissue using ABIN7167196 at dilution of 1:100



Immunohistochemistry

Image 3. Immunohistochemistry of paraffin-embedded human spleen tissue using ABIN7167196 at dilution of 1:100

Please check the [product details page](#) for more images. Overall 4 images are available for ABIN7167196.