

Datasheet for ABIN7167210
anti-MRAS antibody (AA 1-205)[Go to Product page](#)

1 Image

Overview

Quantity:	100 µL
Target:	MRAS
Binding Specificity:	AA 1-205
Reactivity:	Human
Host:	Rabbit
Clonality:	Polyclonal
Conjugate:	This MRAS antibody is un-conjugated
Application:	ELISA, Immunofluorescence (IF)

Product Details

Immunogen:	Recombinant Human Ras-related protein M-Ras protein (1-205aa)
Isotype:	IgG
Cross-Reactivity:	Human
Purification:	>95%, Protein G purified

Target Details

Target:	MRAS
Alternative Name:	MRAS (MRAS Products)
Background:	Background: May serve as an important signal transducer for a novel upstream stimuli in controlling cell proliferation. Weakly activates the MAP kinase pathway.

Target Details

Aliases: Ras-related protein M-Ras (Ras-related protein R-Ras3), MRAS, RRAS3

UniProt: [014807](#)

Application Details

Application Notes: Recommended dilution: IF:1:100-1:500,

Restrictions: For Research Use only

Handling

Format: Liquid

Buffer: Preservative: 0.03 % Proclin 300
Constituents: 50 % Glycerol, 0.01M PBS, pH 7.4

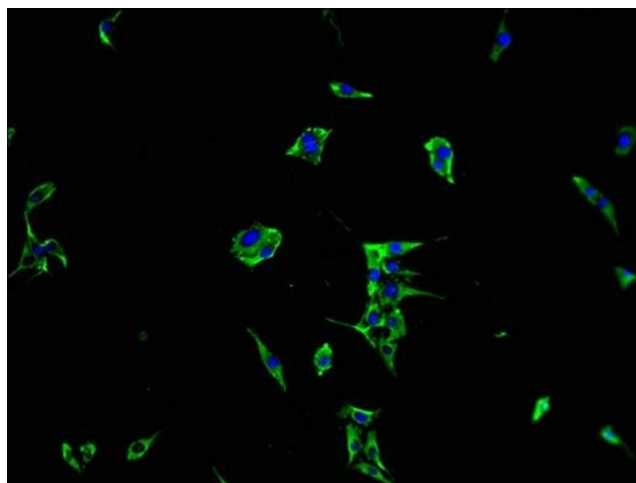
Preservative: ProClin

Precaution of Use: This product contains ProClin: a POISONOUS AND HAZARDOUS SUBSTANCE which should be handled by trained staff only.

Storage: -20 °C, -80 °C

Storage Comment: Upon receipt, store at -20°C or -80°C. Avoid repeated freeze.

Images



Immunofluorescence

Image 1. Immunofluorescence staining of MCF-7 cells with ABIN7167210 at 1:100, counter-stained with DAPI. The cells were fixed in 4 % formaldehyde and blocked in 10 % normal Goat Serum. The cells were then incubated with the antibody overnight at 4 °C. The secondary antibody was Alexa Fluor 488-conjugated AffiniPure Goat Anti-Rabbit IgG(H+L).