



[Go to Product page](#)

Datasheet for ABIN7167225
anti-RAB11B antibody (AA 2-215)

2 Images

Overview

Quantity:	100 µg
Target:	RAB11B
Binding Specificity:	AA 2-215
Reactivity:	Human
Host:	Rabbit
Clonality:	Polyclonal
Conjugate:	This RAB11B antibody is un-conjugated
Application:	Western Blotting (WB), ELISA, Immunohistochemistry (IHC)

Product Details

Immunogen:	Recombinant Human Ras-related protein Rab-11B protein (2-215AA)
Isotype:	IgG
Cross-Reactivity:	Human, Rat
Purification:	>95%, Protein G purified

Target Details

Target:	RAB11B
Alternative Name:	RAB11B (RAB11B Products)
Background:	Background: The small GTPases Rab are key regulators of intracellular membrane trafficking, from the formation of transport vesicles to their fusion with membranes. Rabs cycle between

Target Details

an inactive GDP-bound form and an active GTP-bound form that is able to recruit to membranes different set of downstream effectors directly responsible for vesicle formation, movement, tethering and fusion. That Rab plays a role in endocytic recycling, regulating apical recycling of several transmembrane proteins including cystic fibrosis transmembrane conductance regulator/CFTR, epithelial sodium channel/ENaC, potassium voltage-gated channel, and voltage-dependent L-type calcium channel. May also regulate constitutive and regulated secretion, like insulin granule exocytosis. Required for melanosome transport and release from melanocytes. Also regulates V-ATPase intracellular transport in response to extracellular acidosis.

Aliases: GTP binding protein YPT3 antibody, GTP-binding protein ypt3 antibody, H-YPT3 antibody, RAB 11A antibody, RAB11B antibody, RAB11B member RAS oncogene family antibody, RAB11B, member of RAS oncogene family antibody, Ras related protein Rab 11B antibody, RAS-associated protein RAB11B antibody, Ras-related protein Rab-11B antibody, RB11B_HUMAN antibody, YPT3 antibody

UniProt: [Q15907](#)

Pathways: [Hormone Transport](#), [Carbohydrate Homeostasis](#)

Application Details

Application Notes: Recommended dilution: WB:1:500-1:5000, IHC:1:20-1:200,

Restrictions: For Research Use only

Handling

Format: Liquid

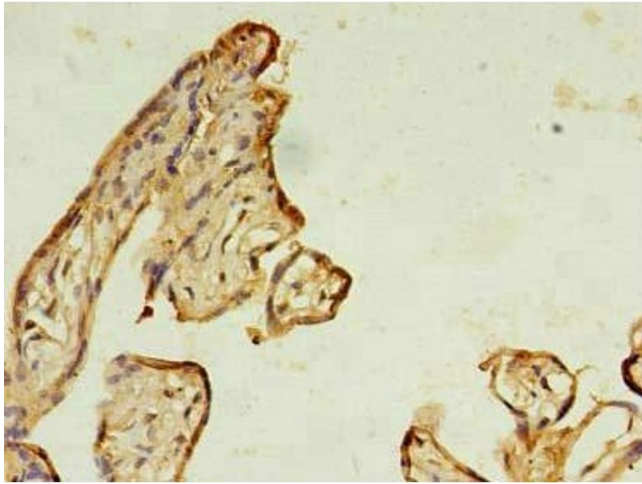
Buffer: Preservative: 0.03 % Proclin 300
Constituents: 50 % Glycerol, 0.01M PBS, PH 7.4

Preservative: ProClin

Precaution of Use: This product contains ProClin: a POISONOUS AND HAZARDOUS SUBSTANCE which should be handled by trained staff only.

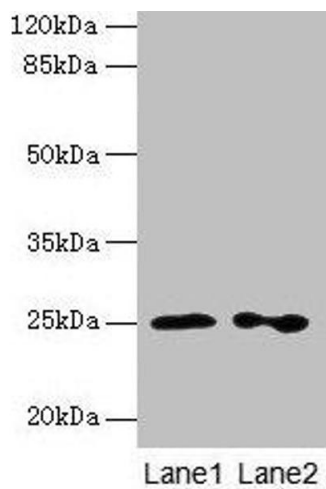
Storage: -20 °C,-80 °C

Storage Comment: Upon receipt, store at -20°C or -80°C. Avoid repeated freeze.



Immunohistochemistry

Image 1. Immunohistochemistry of paraffin-embedded human placenta tissue using ABIN7167225 at dilution of 1:100



Western Blotting

Image 2. Western blot All lanes: RAB11B antibody at 2 μ g/mL Lane 1: Hela whole cell lysate Lane 2: Rat gonadal tissue Secondary Goat polyclonal to rabbit IgG at 1/10000 dilution Predicted band size: 25, 20 kDa Observed band size: 25 kDa