



[Go to Product page](#)

Datasheet for ABIN7167240  
**anti-RAB1B antibody (AA 130-201)**

1 Image

### Overview

Quantity:	100 µg
Target:	RAB1B
Binding Specificity:	AA 130-201
Reactivity:	Human
Host:	Rabbit
Clonality:	Polyclonal
Conjugate:	This RAB1B antibody is un-conjugated
Application:	ELISA, Immunofluorescence (IF)

### Product Details

Immunogen:	Recombinant Human Ras-related protein Rab-1B protein (130-201AA)
Isotype:	IgG
Cross-Reactivity:	Human
Purification:	>95%, Protein G purified

### Target Details

Target:	RAB1B
Alternative Name:	RAB1B ( <a href="#">RAB1B Products</a> )
Background:	Background: The small GTPases Rab are key regulators of intracellular membrane trafficking, from the formation of transport vesicles to their fusion with membranes. Rabs cycle between

## Target Details

---

an inactive GDP-bound form and an active GTP-bound form that is able to recruit to membranes different set of downstream effectors directly responsible for vesicle formation, movement, tethering and fusion. RAB1B regulates vesicular transport between the endoplasmic reticulum and successive Golgi compartments. Plays a role in the initial events of the autophagic vacuole development which take place at specialized regions of the endoplasmic reticulum.

Aliases: RAB1B antibody, RAB1B member RAS oncogene family antibody, RAB1B\_HUMAN antibody, Ras related protein Rab1B antibody, Ras-related protein Rab-1B antibody, Small GTP binding protein antibody

---

UniProt: [Q9H0U4](#)

## Application Details

---

Application Notes: Recommended dilution: IF:1:50-1:200,

Restrictions: For Research Use only

## Handling

---

Format: Liquid

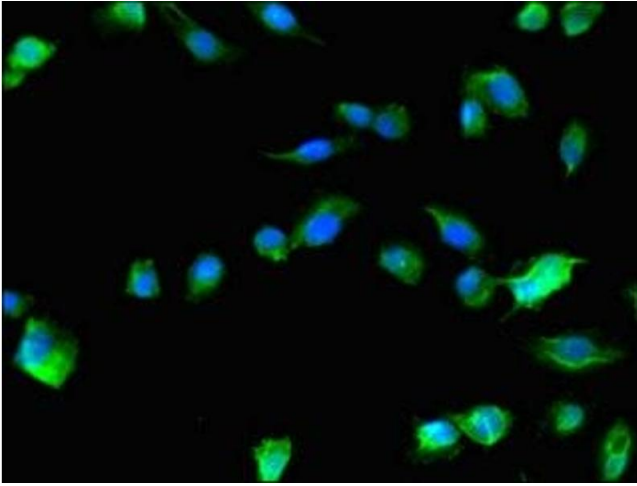
Buffer: Preservative: 0.03 % Proclin 300  
Constituents: 50 % Glycerol, 0.01M PBS, PH 7.4

Preservative: ProClin

Precaution of Use: This product contains ProClin: a POISONOUS AND HAZARDOUS SUBSTANCE which should be handled by trained staff only.

Storage: -20 °C,-80 °C

Storage Comment: Upon receipt, store at -20°C or -80°C. Avoid repeated freeze.



### Immunofluorescence

**Image 1.** Immunofluorescent analysis of U251 cells using ABIN7167240 at dilution of 1:100 and Alexa Fluor 488-conjugated AffiniPure Goat Anti-Rabbit IgG(H+L)